

LOC/DME I-OIU <b>110.75</b> Chan <b>44</b> (Y)	APP CRS <b>011°</b>	Rwy Idg <b>9400</b> TDZE <b>296</b> Apt Elev <b>312</b>
--	------------------------	--

# ILS RWY 1L (CAT II & III)

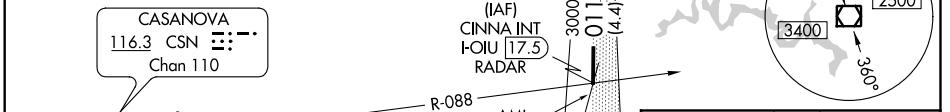
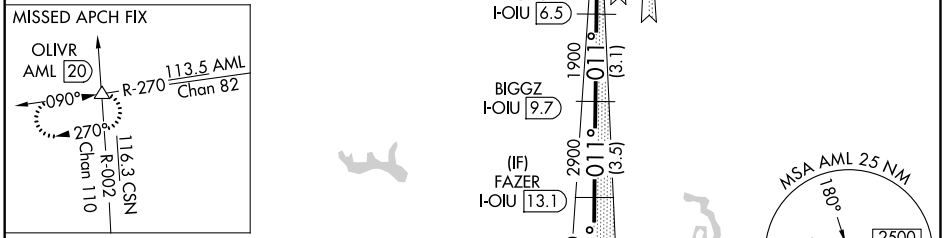
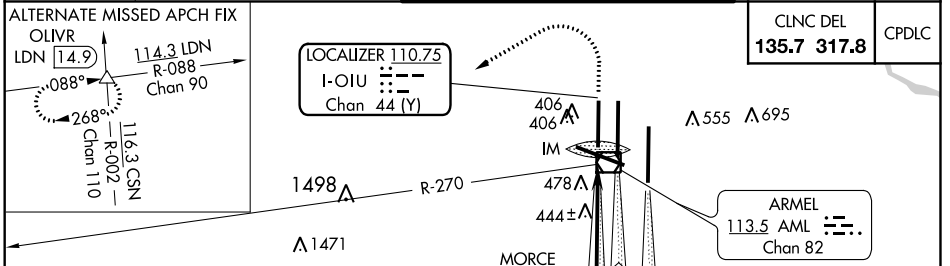
## WASHINGTON DULLES INTL (IAD)

**⚠** Simultaneous approach authorized with ILS or LOC/DME Rwy 1C, ILS Rwy 1C (Cat III), RNAV (GPS) Y Rwy 1C, ILS or LOC Rwy 1R, ILS Rwy 1R (Cat II), ILS Rwy 1R (Cat III), RNAV (GPS) Y Rwy 1R.

ALSF-2

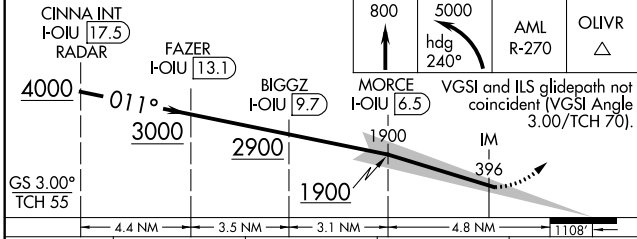
**MISSED APPROACH:** Climb to 800 then climbing left turn to 5000 via heading 240° and AML VOR/DME R-270 to OLIVR INT/AML 20 DME and hold, continue climb-in-hold to 5000.

D-ATIS <b>134.85</b>	POTOMAC APP CON <b>120.45 306.925</b> (241°-330°) <b>128.525 306.925</b> (091°-240°) <b>126.1 338.25</b> (331°-090°)	DULLES TOWER <b>120.1 317.8</b> (Rwy 1R/19L) <b>120.25 348.6</b> (Rwy 1C/19C) <b>134.425 348.6</b> (Rwys 1L/19R and 12/30)	GND CON <b>121.9 317.8</b> (EAST) <b>121.625 348.6</b> (WEST)
-------------------------	---	---	---

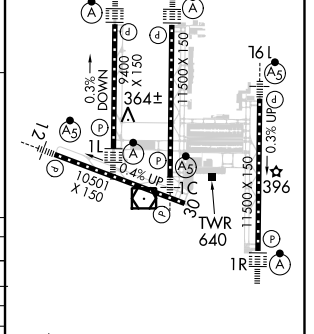


ELEV 312	<b>D</b>	TDZE 296
----------	----------	----------

### DME or RADAR REQUIRED



ELEV 312	<b>D</b>	TDZE 296
----------	----------	----------



CATEGORY	A	B	C	D
S-ILS 1L	CAT II RA 97/12 100 DA 396			
S-ILS 1L	CAT IIIa RVR 07			
S-ILS 1L	CAT IIIb RVR 06			
S-ILS 1L	CAT IIIc NA			

## CATEGORY II & III ILS - SPECIAL AIRCREW & AIRCRAFT CERTIFICATION REQUIRED

TDZ/CL Rwys 1C, 1L, 1R, 12, 19C and 19R  
REIL Rwy 30  
HIRL all Rwys

NE-3, 26 MAR 2020 to 23 APR 2020

NE-3, 26 MAR 2020 to 23 APR 2020