

LOC/DME I-AD 110.1 Chan 38	APP CRS 011°	Rwy Idg 11500 TDZE 312 Apt Elev 312
---	------------------------	--

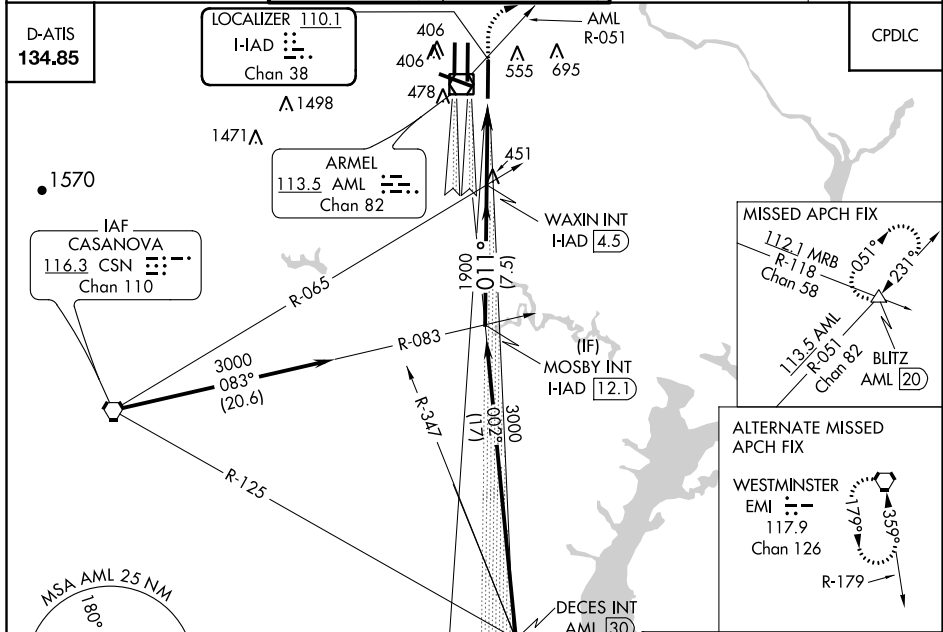
ILS RWY 1R (CAT II & III)

WASHINGTON DULLES INTL (IAD)

Simultaneous approach authorized with Rwy 1C or 1L.

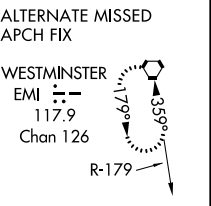
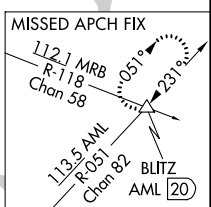
ALS-F-2 MISSED APPROACH: Climb to 800 then climbing right turn to 3000 via heading 060° and AML VOR/DME R-051 to BLITZ INT/AML 20 DME and hold.

POTOMAC APP CON 120.45 306.925 (241°-330°) 128.525 306.925 (091°-240°) 126.1 338.25 (331°-090°)	DULLES TOWER 120.1 317.8 (Rwys 1R/19L) 120.25 348.6 (Rwy 1C/19C) 134.425 348.6 (Rwys 1L/19R and 12/30)	GND CON 121.9 317.8 (EAST) 121.625 348.6 (WEST)	CLNC DEL 135.7 317.8
---	--	---	--------------------------------

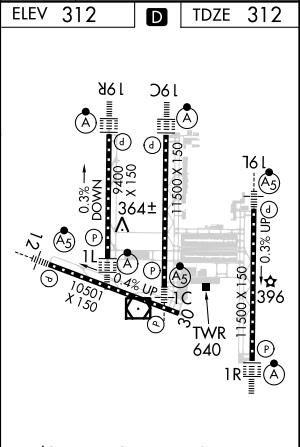
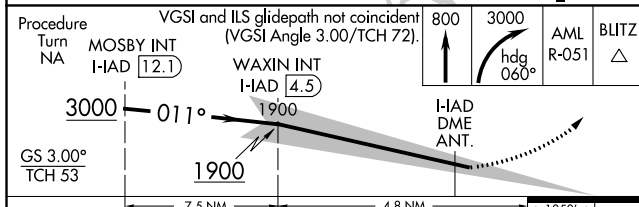


NE-3, 26 MAR 2020 to 23 APR 2020

NE-3, 26 MAR 2020 to 23 APR 2020



ELEV 312	D	TDZE 312
----------	----------	----------



CATEGORY	A	B	C	D
S-ILS 1R		CAT II RA 94/12	100 DA 412	
S-ILS 1R		CAT IIIa	RVR 07	
S-ILS 1R		CAT IIIb	RVR 06	
S-ILS 1R		CAT IIIc	NA	

CATEGORY II & III ILS - SPECIAL AIRCREW & AIRCRAFT CERTIFICATION REQUIRED

TDZ/CL Rwys 1C, 1L, 1R, 12, 19C and 19R
REIL Rwy 30
HIRL all Rwys