

LOC I-OSZ <b>111.3</b>	APP CRS <b>011°</b>	Rwy ldg TDZE Apt Elev	<b>11500</b> <b>286</b> <b>313</b>
---------------------------	------------------------	-----------------------------	--

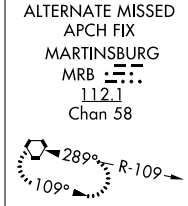
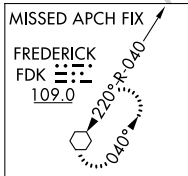
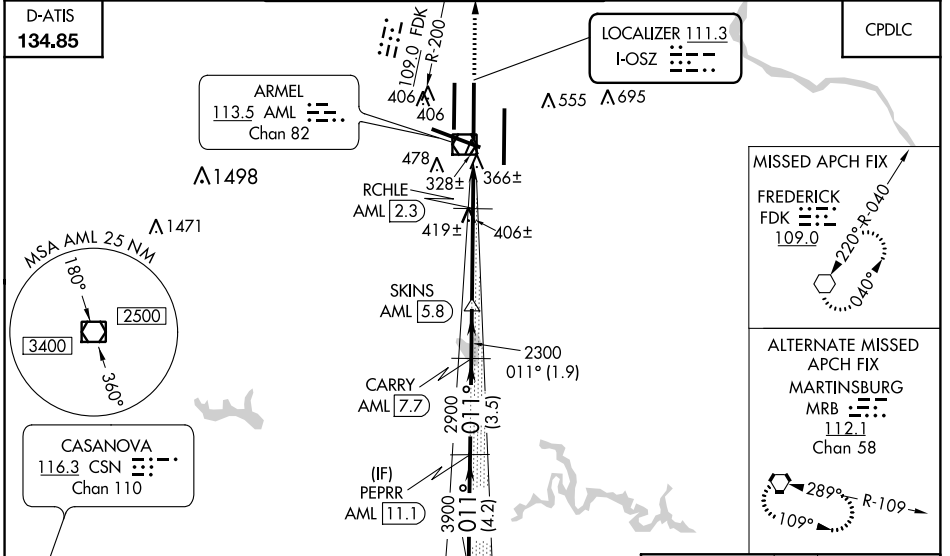
# ILS or LOC/DME RWY 1C

WASHINGTON DULLES INTL (IAD)

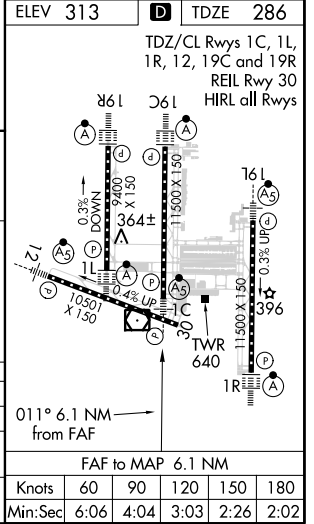
**⚠** DME from AML VOR/DME. Simultaneous reception of I-OSZ and AML DME required. Simultaneous approach authorized with ILS or LOC/DME Rwy 1L, ILS Rwy 1L (Cat II), ILS Rwy 1L (Cat III), ILS or LOC Rwy 1R, ILS Rwy 1R (Cat II), ILS Rwy 1R (Cat III). DME required. For Inoperative MALSR, increase S-LOC Cats C/D visibility to RVR 5000. \*\*1800 RVR authorized with the use of FD or AP or HUD to DA.

**MALSR**  
 MISSED APPROACH: Climb to 3000 on heading 011° and FDK VOR R-200 to FDK VOR and hold.

POTOMAC APP CON <b>120.45 306.925</b> (241°-330°) <b>128.525 306.925</b> (091°-240°) <b>126.1 338.25</b> (331°-090°)	DULLES TOWER <b>120.1 317.8</b> (Rwy 1R/19L) <b>120.25 348.6</b> (Rwy 1C/19C) <b>134.425 348.6</b> (Rwys 1L/19R and 12/30)	GND CON <b>121.9 317.8</b> (EAST) <b>121.625 348.6</b> (WEST)	CLNC DEL <b>135.7 317.8</b>
---	---	---	--------------------------------



LUSIE INT AML [15.3] RADAR	PEPRR AML [11.1]	CARRY AML [7.7]	SKINS AML [5.8]	FDK	TDZE <b>286</b>
5000	3900	2900	2300	3000	ELEV <b>313</b>
GS 3.00° TCH 54	VGSi and ILS glidepath not coincident (VGSi Angle 3.00/TCH 70).				FDK R-200
	hdg 011°				
	*1140				
	*LOC only.				



CATEGORY	A	B	C	D
S-ILS 1C		** 486/24	200 (200-½)	
S-LOC 1C		620/24	334 (400-½)	620/40 334 (400-¾)
CIRCLING	940-1	627 (700-1)	940-1¼ 627 (700-1¾)	940-2 627 (700-2)

NE-3, 26 MAR 2020 to 23 APR 2020

NE-3, 26 MAR 2020 to 23 APR 2020