

LOC/DME I-OIU <b>110.75</b> Chan 44 (Y)	APP CRS <b>011°</b>	Rwy ldg <b>9400</b> TDZE <b>296</b> Apt Elev <b>312</b>
---	------------------------	--

# ILS or LOC/DME RWY 1L

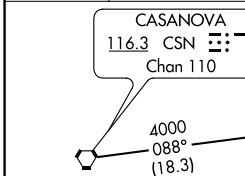
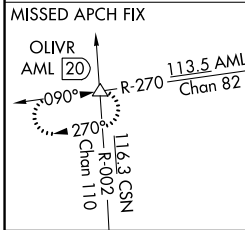
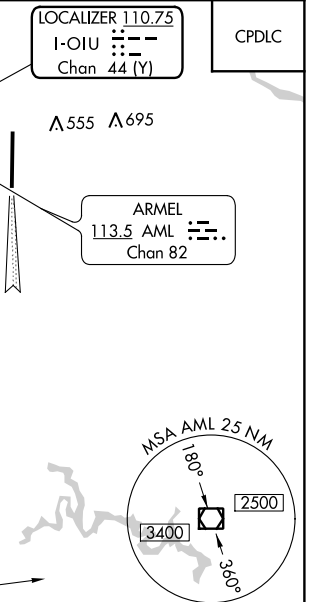
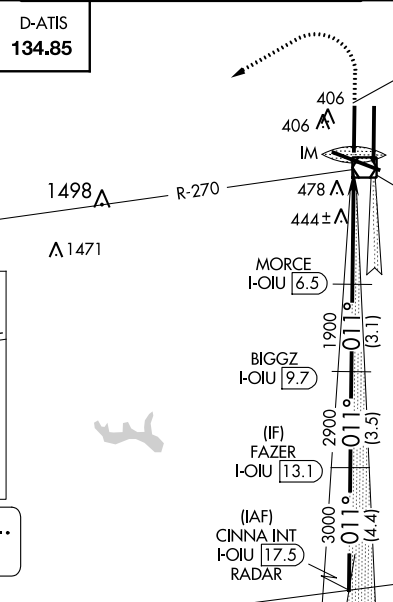
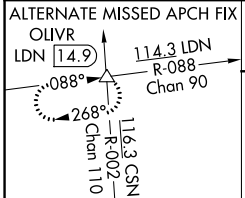
WASHINGTON DULLES INTL (IAD)

**Simultaneous approach authorized with ILS or LOC/DME Rwy 1C, ILS Rwy 1C (Cat II), RNAV (GPS) Y Rwy 1C, ILS or LOC Rwy 1R, ILS Rwy 1R (Cat II), ILS Rwy 1R (Cat III), RNAV (GPS) Y Rwy 1R.**

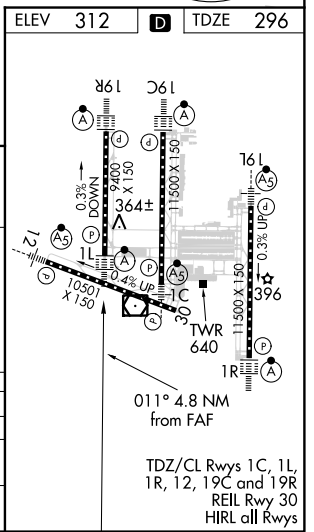
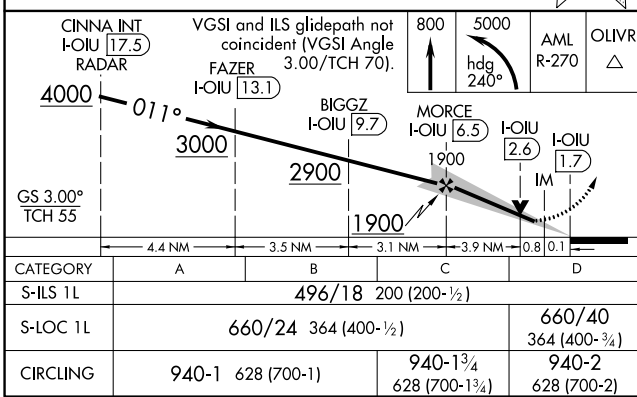
ALSF-2

MISSED APPROACH: Climb to 800 then climbing left turn to 5000 via heading 240° and AML VOR/DME R-270 to OLVR INT/AML 20 DME and hold, continue climb-in-hold to 5000.

POTOMAC APP CON <b>120.45 306.925</b> (241°-330°) <b>128.525 306.925</b> (091°-240°) <b>126.1 338.25</b> (331°-090°)	DULLES TOWER <b>120.1 317.8</b> (Rwy 1R/19L) <b>120.525 348.6</b> (Rwy 1C/19C) <b>134.425 348.6</b> (Rwys 1L/19R and 12/30)	GND CON <b>121.9 317.8</b> (EAST) <b>121.625 348.6</b> (WEST)	CLNC DEL <b>135.7 317.8</b>
---	--	---	--------------------------------



## DME or RADAR REQUIRED



NE-3, 26 MAR 2020 to 23 APR 2020

NE-3, 26 MAR 2020 to 23 APR 2020