

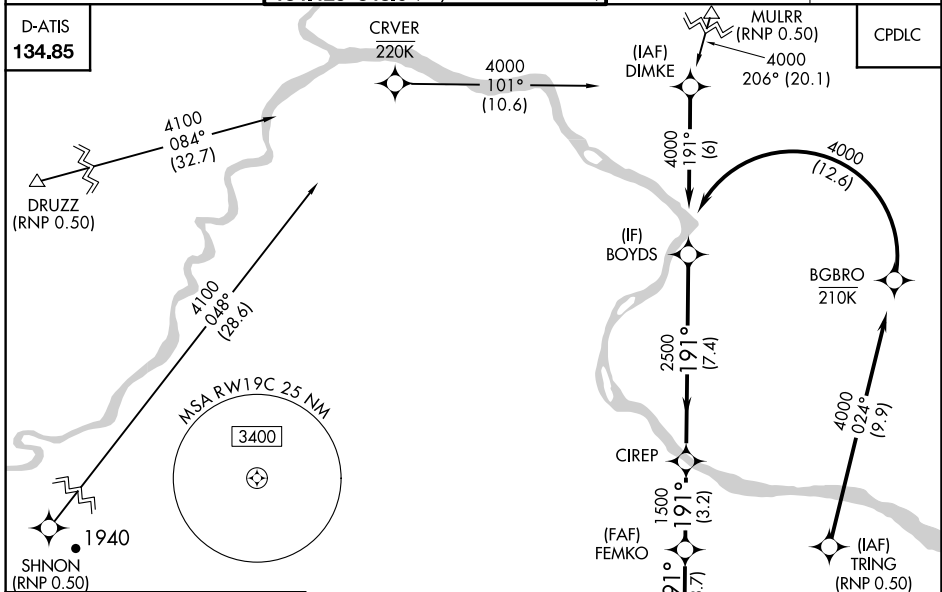
APP CRS	Rwy Idg	11089
191°	TDZE	272
	Apt Elev	312

RNAV (RNP) Z RWY 19C

WASHINGTON DULLES INTL (IAD)

<p>GPS required. For uncompensated Baro-VNAV systems, procedure NA below -14°C (6°F) or above 47°C (117°F). For inoperative ALSF, increase RNP 0.30 visibility to 1 3/4. Simultaneous approach authorized with ILS or LOC Rwy 19L, ILS Rwy 19L (Cat II). Use of FD or AP providing RNAV track guidance required during simultaneous operations.</p>	<p>ALSF-2</p>	<p>MISSED APPROACH: Climb to 4000 via track 191° to BOPAC and via track 265° to BLUES and hold.</p>
---	---------------	---

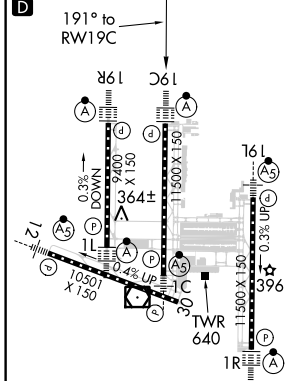
<p>POTOMAC APP CON</p> <p>120.45 306.925 (241°-330°)</p> <p>128.525 306.925 (091°-240°)</p> <p>126.1 338.25 (331°-090°)</p>	<p>DULLES TOWER</p> <p>120.1 317.8 (Rwys 1R/19L)</p> <p>120.25 348.6 (Rwys 1C/19C)</p> <p>134.425 348.6 (Rwys 1L/19R and 12/30)</p>	<p>GND CON</p> <p>121.9 317.8 (EAST)</p> <p>121.625 348.6 (WEST)</p>	<p>CLNC DEL</p> <p>135.7 317.8</p>
--	--	--	---



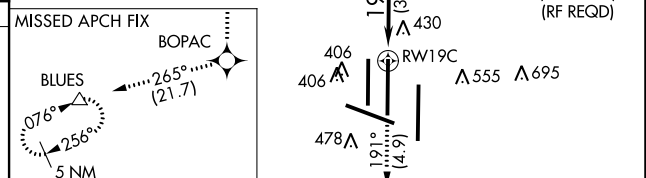
NE-3, 26 MAR 2020 to 23 APR 2020

NE-3, 26 MAR 2020 to 23 APR 2020

ELEV 312	TDZE 272
----------	----------



TDZ/CL 1C, 1L, 1R, 12, 19C and 19R
REIL Rwy 30
HIRL all Rwys



4000	tr 191°	BOPAC	tr 265°	BLUES	BOYDS	Procedure Turn NA
VGSi and RNAV glidepath not coincident (VGSi Angle 3.00/TCH 72).				FEMKO	CIREP	GP 3.00° TCH 54
RWY 19C		1500	2500	4000		
3.7 NM		3.2 NM	7.4 NM			

CATEGORY	A	B	C	D
RNP 0.30 DA	740/60 468 (500-1 1/4)			
AUTHORIZATION REQUIRED				