


APP CRS 191°	Rwy Idg 11500
TDZE 302	
Apt Elev 312	

RNAV (RNP) Z RWY 19L

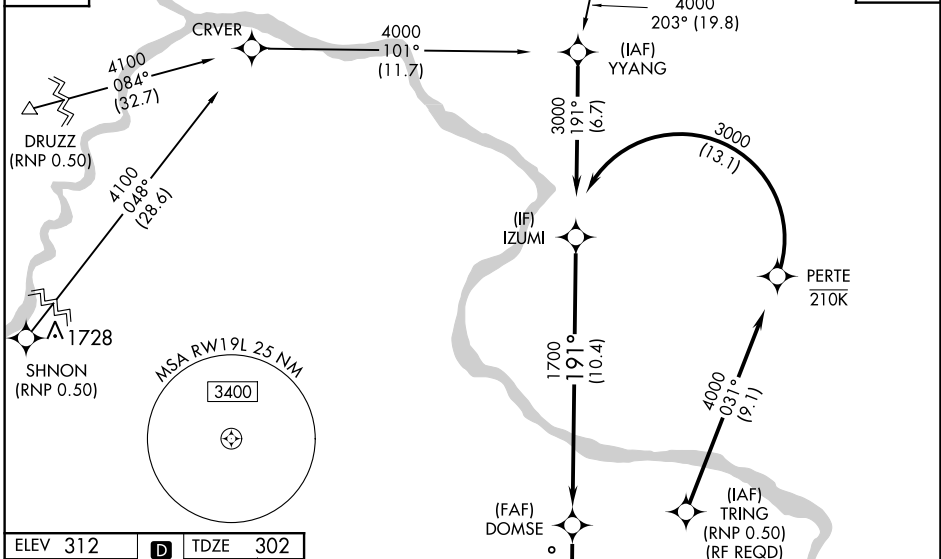
WASHINGTON DULLES INTL (IAD)

GPS required. For uncompensated Baro-VNAV systems, procedure NA below -14°C (6°F) or above 47°C (118°F). For inoperative MALSR, increase RNP 0.30 visibility to 1½. Simultaneous approach authorized with ILS or LOC/DME Rwy 19R, ILS Rwy 19R (Cat III), ILS Rwy 19R (Cat III). Use of FD or AP providing RNAV track guidance required during simultaneous operations.

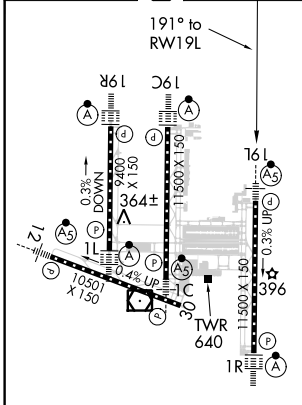
MALSR
 MISSED APPROACH: Climb to 2000 via track 191° to WAXIN and hold.

POTOMAC APP CON 120.45 306.925 (241°-330°) 128.525 306.925 (091°-240°) 126.1 338.25 (331°-090°)	DULLES TOWER 120.1 317.8 (Rwy 1R/19L) 120.25 348.6 (Rwy 1C/19C) 134.425 348.6 (Rwys 1L/19R and 12/30)	GND CON 121.9 317.8 (EAST) 121.625 348.6 (WEST)	CLNC DEL 135.7 317.8
---	---	---	--------------------------------

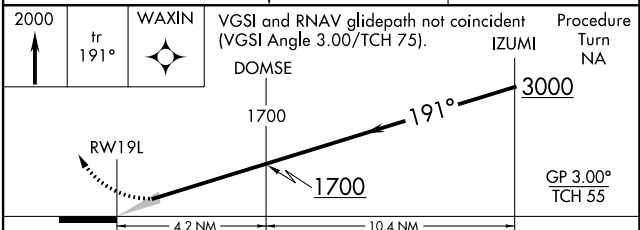
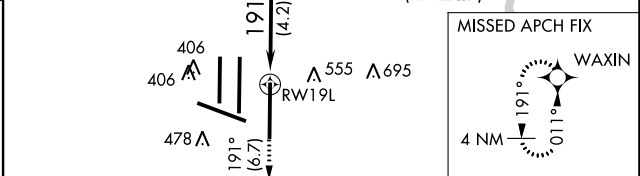
D-ATIS 134.85	MULRR (RNP 0.50) 4000 203° (19.8)	CPDLC
-------------------------	---	-------



ELEV 312	D	TDZE 302
----------	----------	----------



TDZ/CL 1C, 1L, 1R, 12, 19C and 19R
 REIL Rwy 30
 HIRL all Rwys



CATEGORY	A	B	C	D
RNP 0.30 DA	743/50 441 (500-1)			

AUTHORIZATION REQUIRED

NE-3, 26 MAR 2020 to 23 APR 2020

NE-3, 26 MAR 2020 to 23 APR 2020