

APP CRS	Rwy Idg	11500
011°	TDZE	312
	Apt Elev	312

RNAV (RNP) Z RWY 1R

WASHINGTON DULLES INTL (IAD)

▼ GPS required. For uncompensated Baro-VNAV systems, procedure NA below -14°C (6°F) or above 48°C (119°F). For inoperative ALSF-2, increase RNP 0.30 visibility to 1 3/4. Simultaneous approach authorized with ILS or LOC/DME Rwy 1L, ILS Rwy 1L (Cat III), ILS Rwy 1L (Cat III). Use of FD or AP providing RNAV track guidance required during simultaneous operations.



MISSED APPROACH: Climb to 5000 via track 011° to FUREE and left turn direct HARPP and hold.

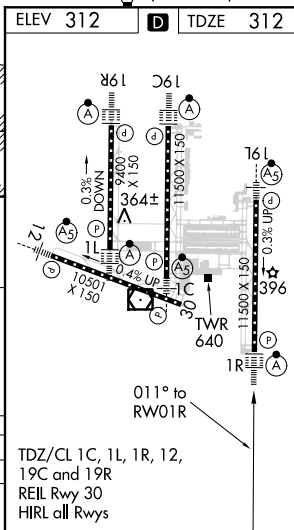
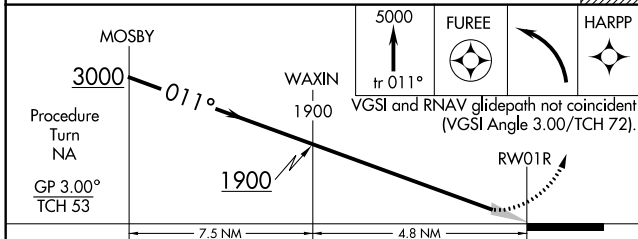
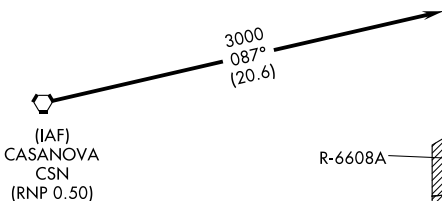
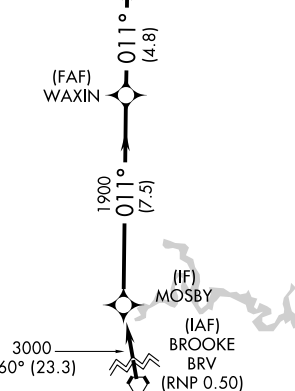
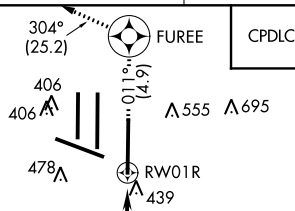
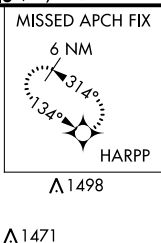
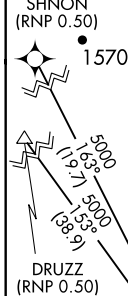
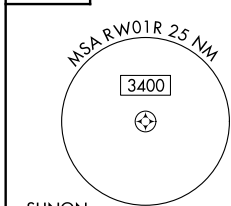
POTOMAC APP CON		
120.45	306.925	(241°-330°)
128.525	306.925	(091°-240°)
126.1	338.25	(331°-090°)

DULLES TOWER		
120.1	317.8	(Rwy 1R/19L)
120.25	348.6	(Rwy 1C/19C)
134.425	348.6	(Rwys 1L/19R and 12/30)

GND CON	
121.9	317.8 (EAST)
121.625	348.6 (WEST)

CLNC DEL	
135.7	317.8

D-ATIS
134.85



CATEGORY	A	B	C	D
RNP 0.30 DA	819/60 507 (600-1 1/4)			

AUTHORIZATION REQUIRED

TDZ/CL 1C, 1L, 1R, 12, 19C and 19R
REIL Rwy 30
HIRL all Rwys

NE-3, 26 MAR 2020 to 23 APR 2020

NE-3, 26 MAR 2020 to 23 APR 2020