

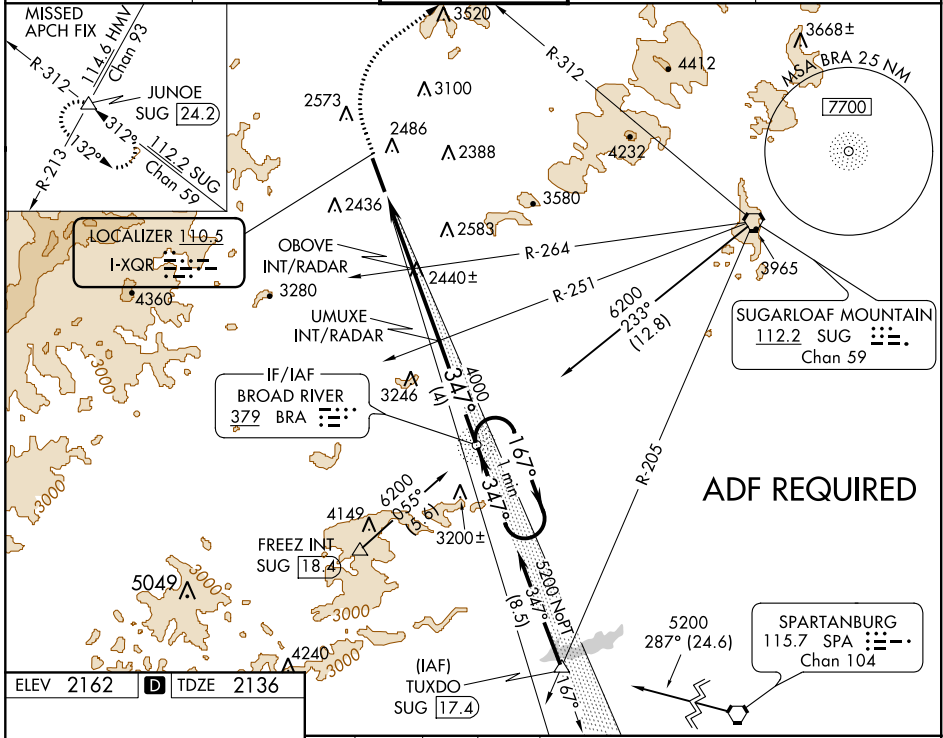
LOC I-XQR 110.5	APP CRS 347°	Rwy Idg TDZE Apt Elev	7001 2136 2162
---------------------------	------------------------	-----------------------------	---

ILS or LOC RWY 35

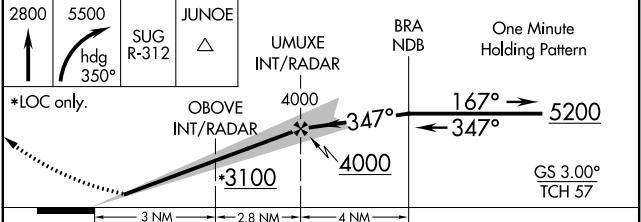
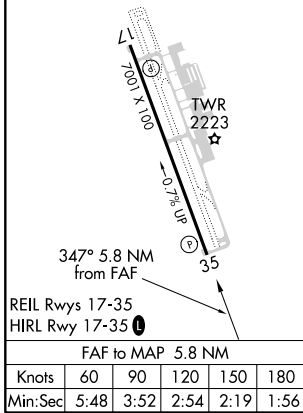
ASHEVILLE RGNL (AVL)

⚠ Circling NA west of Runway 17-35. MISSED APPROACH: Climb to 2800 then climbing right turn to 5500 on heading 350 and SUG VORTAC R-312 to JUNOE INT/SUG 2.4 DME and hold.

ATIS 120.2	ASHEVILLE APP CON 124.65 269.575	ASHEVILLE TOWER ★ 121.1 (CTAF) 0 257.8	GND CON 121.9	UNICOM 122.95
----------------------	--	--	-------------------------	-------------------------



ELEV 2162	D	TDZE 2136
-----------	----------	-----------



CATEGORY	A	B	C	D
S-ILS 35	2336-3/4		200 (200-3/4)	
S-LOC 35	3100-1 1/4 964 (1000-1 1/4)	3100-1 1/2 964 (1000-1 1/2)	3100-3	964 (1000-3)
C CIRCLING	3100-1 1/4 938 (1000-1 1/4)	3100-1 1/2 938 (1000-1 1/2)	3320-3 1158 (1200-3)	3640-3 1478 (1500-3)
OBOVE FIX MINIMUMS (DUAL VOR RECEIVERS OR RADAR REQUIRED)				
S-LOC 35	2700-1	564 (600-1)	2700-1 1/2	564 (600-1 1/2)
C CIRCLING	2800-1 638 (700-1)	2880-1 718 (800-1)	3320-3 1158 (1200-3)	3640-3 1478 (1500-1)

SE-2, 16 JUL 2020 to 13 AUG 2020

SE-2, 16 JUL 2020 to 13 AUG 2020