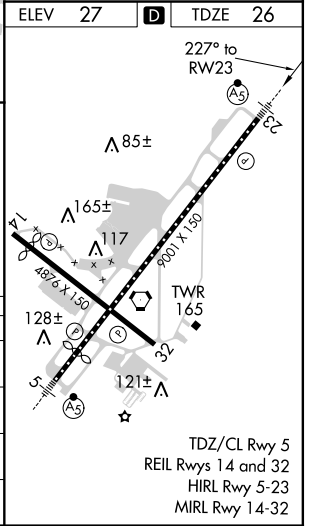
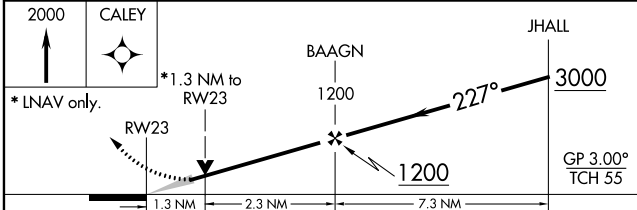
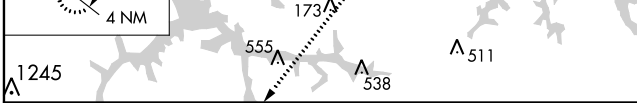
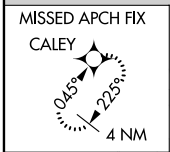
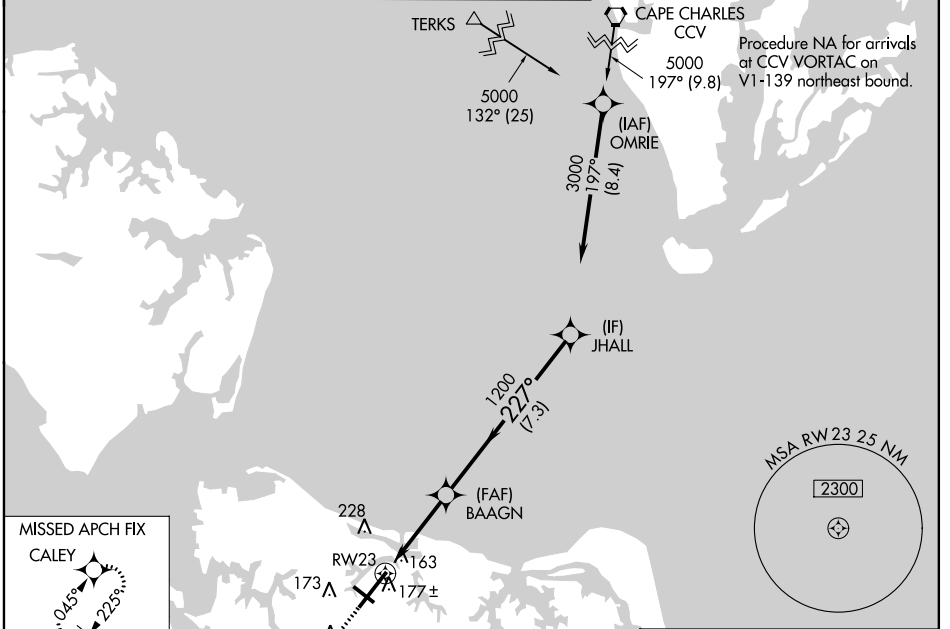


WAAS CH <b>56322</b> <b>W23A</b>	APP CRS <b>227°</b>	Rwy Idg TDZE Apt Elev	<b>8995</b> <b>26</b> <b>27</b>
--	------------------------	-----------------------------	---------------------------------------

# RNAV (GPS) Z RWY 23

NORFOLK INTL (ORF)

<p>For uncompensated Baro-VNAV systems, LNAV/VNAV NA below -9°C (16°F) or above 54°C (130°F). DME/DME RNP-0.3 NA.</p>	<p>MALSR</p>		<p>MISSED APPROACH: Climb to 2000 direct CALEY and hold.</p>	
	<p>ATIS <b>127.15</b></p>	<p>NORFOLK APP CON <b>118.9 353.7</b></p>	<p>NORFOLK TOWER <b>120.8 257.8</b></p>	<p>GND CON <b>121.9</b></p>



CATEGORY	A	B	C	D
LPV DA		226-½	200 (200-½)	
LNAV/VNAV DA		403-¾	377 (400-¾)	
LNAV MDA	480-½	454 (500-½)	480-⅞	454 (500-⅞)
CIRCLING	480-1 453 (500-1)	540-1 513 (600-1)	540-1½ 513 (600-1½)	900-2¾ 873 (900-2¾)

NE-3, 10 SEP 2020 to 08 OCT 2020

NE-3, 10 SEP 2020 to 08 OCT 2020

TDZ/CL Rwy 5  
REIL Rwys 14 and 32  
HIRL Rwy 5-23  
MIRL Rwy 14-32