

COLIN EIGHT DEPARTURE

ATIS 119.15 263.025
CLNC DEL
127.55 348.6
GND CON
121.9 348.6
RICHMOND TOWER
121.1 257.8
POTOMAC DEP CON
126.4 282.375

**TOP ALTITUDE:
5000**

BROOKE
114.5 BRV
Chan 92

COLIN
N38°05.99'
W76°39.85'
L-34-36, H-10-12

TAKEOFF MINIMUMS

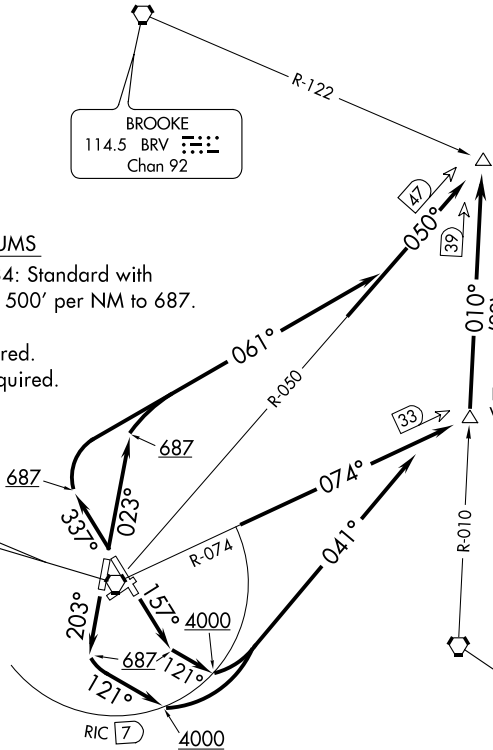
Rwys 2, 16, 20, 34: Standard with minimum climb of 500' per NM to 687.

NOTE: DME required.
NOTE: RADAR required.

RICHMOND
114.1 RIC
Chan 88

MODEL
N37°44.03'
W76°41.45'
L-34-36

HARCUM
108.8 HCM
Chan 25



NOTE: Chart note to scale.

NE-3, 10 SEP 2020 to 08 OCT 2020

NE-3, 10 SEP 2020 to 08 OCT 2020



DEPARTURE ROUTE DESCRIPTION

TAKEOFF RUNWAY 2: Climb heading 023° to 687, then climbing right turn heading 061° to intercept RIC VORTAC R-050 to COLIN INT/RIC 47 DME, thence . . .

TAKEOFF RUNWAY 16: Climb heading 157° to 687, then climbing left turn heading 121° to cross RIC VORTAC 7 DME at or above 4000, then climbing left turn heading 041° to intercept RIC VORTAC R-074 to MODEL INT/RIC 33 DME, then on HCM VORTAC R-010 to COLIN INT/HCM 39 DME, thence . . .

TAKEOFF RUNWAY 20: Climb heading 203° to 687, then climbing left turn heading 121° to cross RIC VORTAC 7 DME at or above 4000, then climbing left turn heading 041° to intercept RIC VORTAC R-074 to MODEL INT/RIC 33 DME, then on HCM VORTAC R-010 to COLIN INT/HCM 39 DME, thence . . .

TAKEOFF RUNWAY 34: Climb heading 337° to 687, then climbing right turn heading 061° to intercept RIC VORTAC R-050 to COLIN INT/RIC 47 DME, thence . . .

. . . maintain 5000 or assigned altitude. Expect filed altitude within ten minutes after departure.

COLIN EIGHT DEPARTURE