

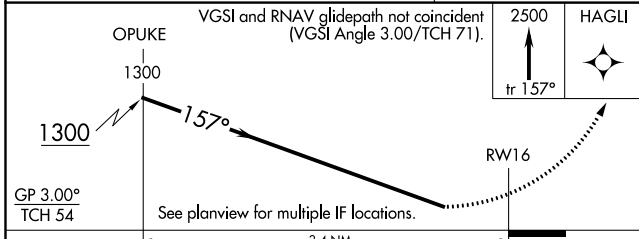
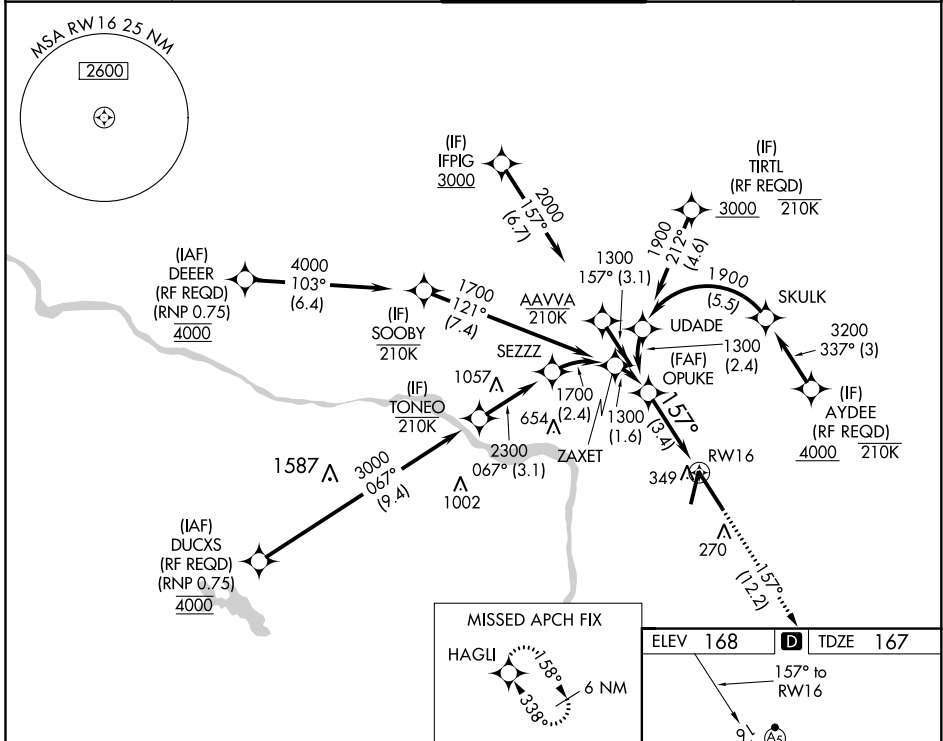
APP CRS	Rwy Idg	<b>9003</b>
<b>157°</b>	TDZE	<b>167</b>
	Apt Elev	<b>168</b>

# RNAV (RNP) Y RWY 16

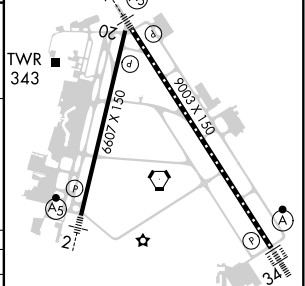
RICHMOND INTL (RIC)

RNP AR APCH.	MALSR	MISSED APPROACH: Climb to 2500 on track 157° to HAGLI and hold.
<p>▼ For uncompensated Baro-VNAV systems, procedure NA below -11°C (13°F) or above 54°C (130°F). For inop ALS, increase RNP 0.11 all Cats visibility to RVR 5500 and RNP 0.30 all Cats visibility to 1½ SM.</p>		

ATIS	POTOMAC APP CON	RICHMOND TOWER	GND CON	CLNC DEL
<b>119.15 263.025</b>	<b>126.4 282.375</b> (001°-185°) <b>126.75 307.2</b> (186°-360°)	<b>121.1 257.8</b>	<b>121.9 348.6</b>	<b>127.55 348.6</b>



ELEV 168	<b>D</b>	TDZE 167
----------	----------	----------



GP 3.00°	See planview for multiple IF locations.			
TCH 54	3.4 NM			
CATEGORY	A	B	C	D
RNP 0.11 DA	506/40 339 (400-¾)			
RNP 0.30 DA	606/50 439 (500-1)			

TDZ/CL Rwy 34  
HIRL Rwy 2-20 and 16-34  
REIL Rwy 20

## AUTHORIZATION REQUIRED

NE-3, 10 SEP 2020 to 08 OCT 2020

NE-3, 10 SEP 2020 to 08 OCT 2020