


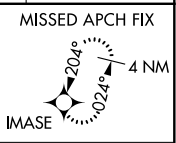
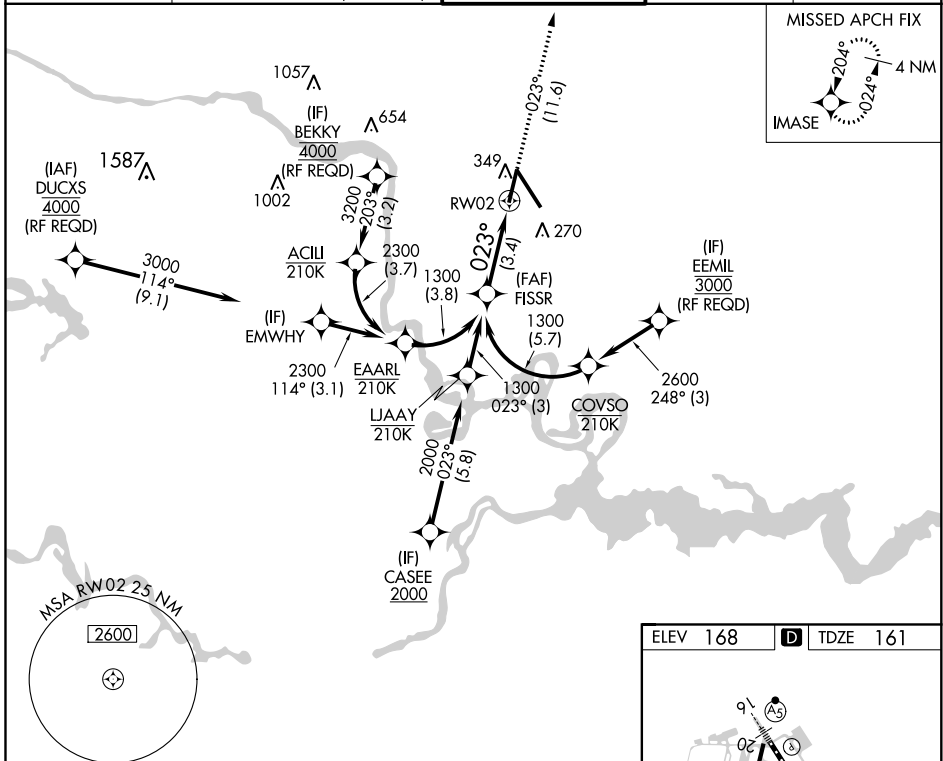
APP CRS	Rwy Idg	6607
023°	TDZE	161
	Apt Elev	168

RNAV (RNP) Y RWY 2

RICHMOND INTL (RIC)

RNP AR APCH.	MALSR 	MISSED APPROACH: Climb to 2100 on track 023° to IMASE and hold.
<p>▼ For uncompensated Baro-VNAV systems, procedure NA below -11°C (13°F) or above 54°C (130°F). Rwy 2 helicopter visibility reduction below ¾ SM NA. For inop ALS, increase RNP 0.11 all Cats visibility to 1 SM and RNP 0.3 all Cats visibility to 1¼ SM.</p>		



ATIS 119.15 263.025	POTOMAC APP CON 126.4 282.375 (001°-185°) 126.75 307.2 (186°-360°)	RICHMOND TOWER 121.1 257.8	GND CON 121.9 348.6	CLNC DEL 127.55 348.6
-------------------------------	--	--------------------------------------	-------------------------------	---------------------------------



NE-3, 10 SEP 2020 to 08 OCT 2020

NE-3, 10 SEP 2020 to 08 OCT 2020

See planview for multiple IF locations.

1300	1300	2100	IMASE
		↑	
		tr 023°	
			

GP 3.00° TCH 50

3.4 NM

CATEGORY	A	B	C	D
RNP 0.11 DA		506-¾	345 (400-¾)	
RNP 0.30 DA		595-1	434 (500-1)	

AUTHORIZATION REQUIRED

ELEV 168 **D** TDZE 161

TWR 343

900 X 1.50

6607 X 1.50

023° to RWY 2

TDZ/CL Rwy 34
HIRL Rwys 2-20 and 16-34
REIL Rwy 20