

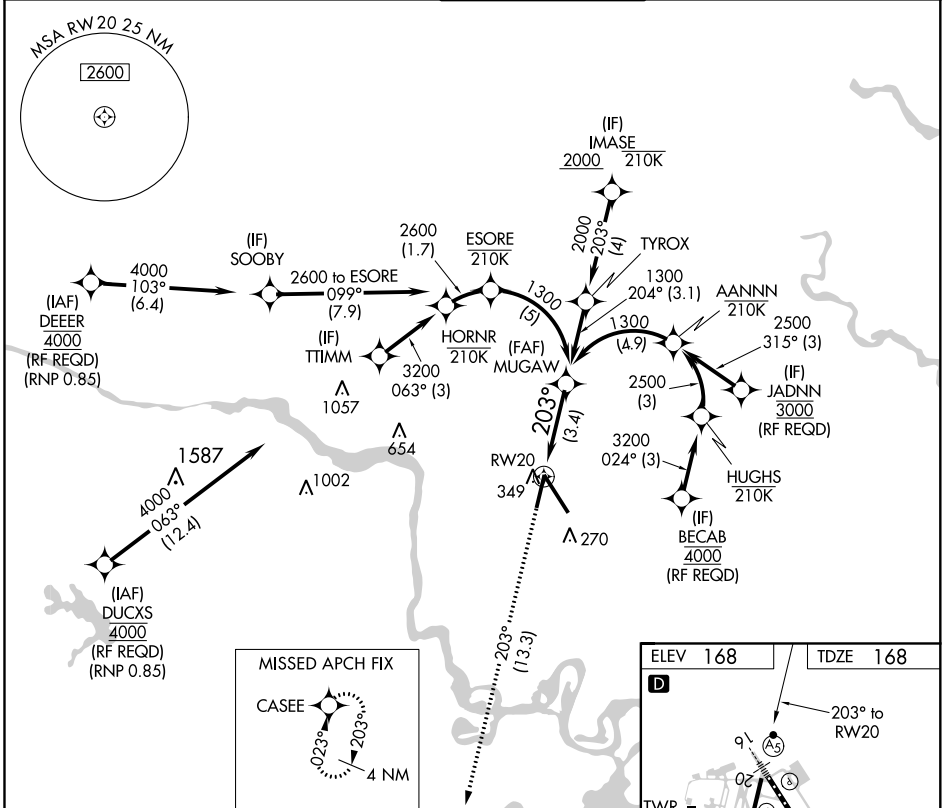
APP CRS	Rwy Idg	6607
203°	TDZE	168
	Apt Elev	168

RNAV (RNP) Y RWY 20

RICHMOND INTL (RIC)

RNP AR APCH.	MISSED APPROACH: Climb to 2000 on track 203° CASEE and hold.
▼ For uncompensated Baro-VNAV systems, procedure NA below -11°C or above 54°C.	

ATIS	POTOMAC APP CON	RICHMOND TOWER	GND CON	CLNC DEL
119.15 263.025	126.4 282.375 (001°-185°) 126.75 307.2 (186°-360°)	121.1 257.8	121.9 348.6	127.55 348.6



NE-3, 10 SEP 2020 to 08 OCT 2020

NE-3, 10 SEP 2020 to 08 OCT 2020

2000	CASEE	See planview for multiple IF locations.			
↑ tr 203°					
3.4 NM					
CATEGORY	A	B	C	D	
RNP 0.11 DA	505-1		337 (400-1)		
RNP 0.30 DA	613-1½		445 (500-1½)		
AUTHORIZATION REQUIRED					

