

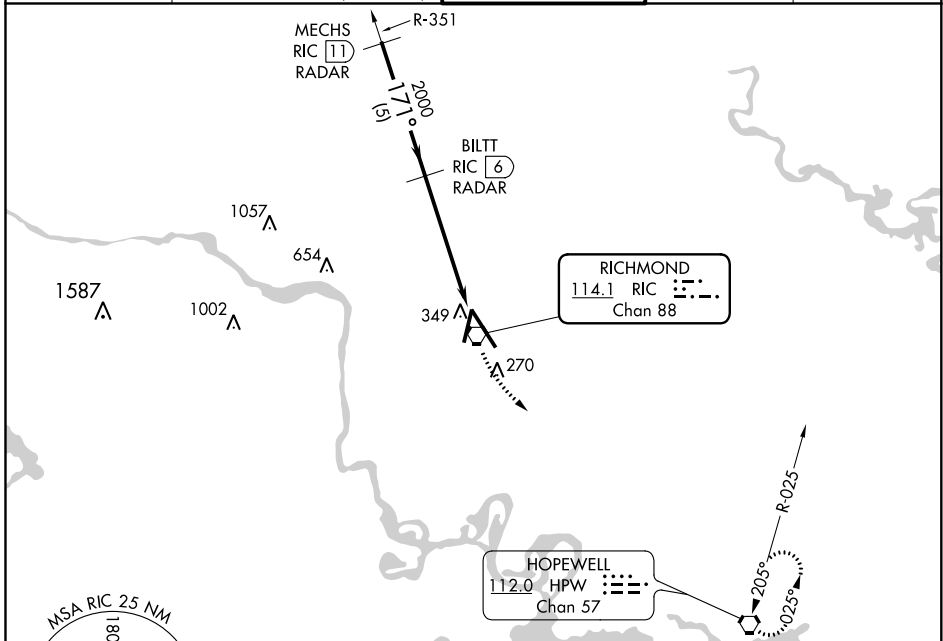
VORTAC RIC <b>114.1</b> Chan <b>88</b>	APP CRS <b>171°</b>	Rwy Idg TDZE <b>167</b> Apt Elev <b>167</b>	<b>9003</b>
--	------------------------	---	-------------

# VOR RWY 16

RICHMOND INTL (RIC)

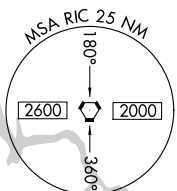
DME or RADAR required. RADAR required for procedure entry.		MALSR	MISSED APPROACH: Climbing left turn to 2000 direct HPW VORTAC and hold.
▼ Rwy 16 helicopter visibility reduction below RVR 4000 NA. For inop ALS, increase S-16 Cat A/B visibility to RVR 5500, and Cat C/D to 1 3/8 SM.			

ATIS <b>119.15 263.025</b>	POTOMAC APP CON <b>126.4 282.375</b> (001°-185°) <b>126.75 307.2</b> (186°-360°)	RICHMOND TOWER <b>121.1 257.8</b>	GND CON <b>121.9 348.6</b>	CLNC DEL <b>127.55 348.6</b>
-------------------------------	--	--------------------------------------	-------------------------------	---------------------------------

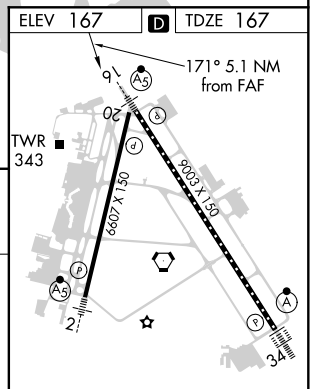
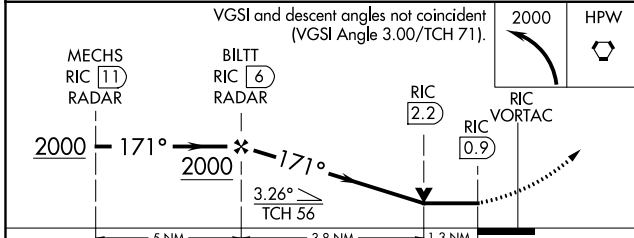


NE-3, 10 SEP 2020 to 08 OCT 2020

NE-3, 10 SEP 2020 to 08 OCT 2020



ELEV 167	D	TDZE 167
----------	---	----------



CATEGORY	A	B	C	D		
S-16	640/40 473 (500-3/4)			640/50 473 (500-1)		
CIRCLING	660-1 493 (500-1)	700-1 1/2 533 (600-1 1/2)		720-2 553 (600-2)		
	TDZ/CL Rwy 34 HIRL Rwy 2-20 and 16-34 REIL Rwy 20					
	FAF to MAP 5.1 NM					
	Knots	60	90	120	150	180
	Min:Sec	5:06	3:24	2:33	2:02	1:42