

VORTAC RIC 114.1 Chan 88	APP CRS 041°	Rwy Idg TDZE Apt Elev	6607 162 167
---------------------------------------	------------------------	-----------------------------	---

VOR RWY 2

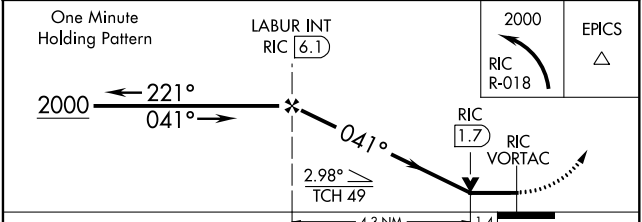
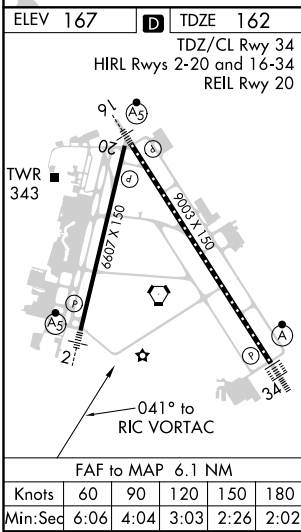
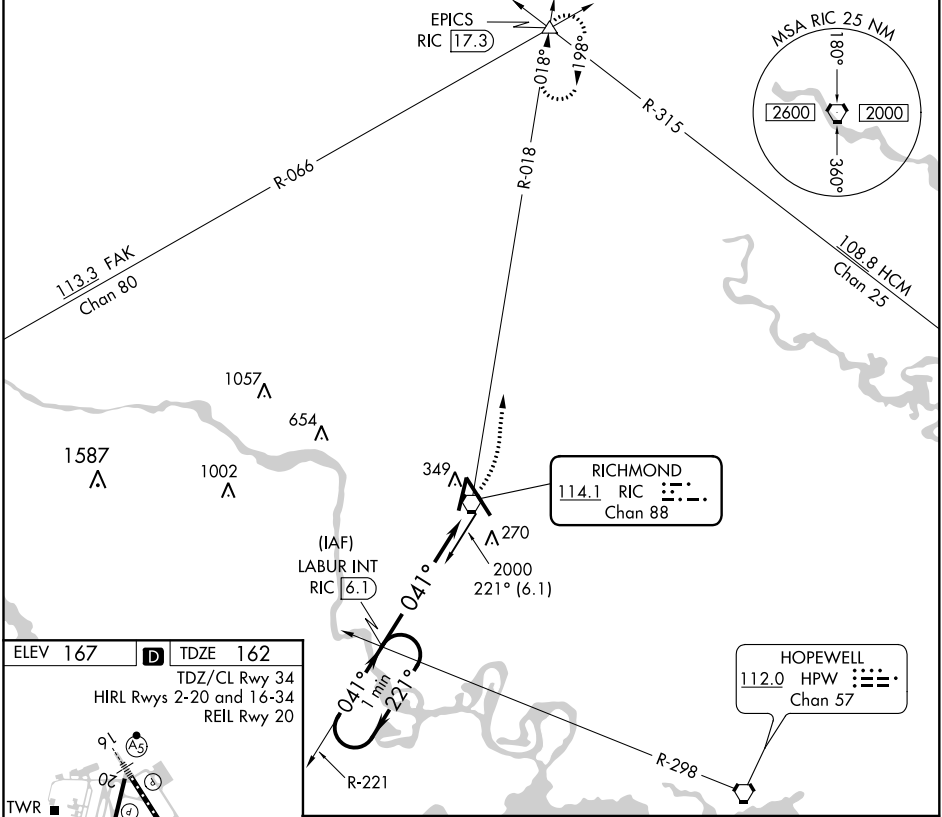
RICHMOND INTL (RIC)

▼ Rwy 2 helicopter visibility reduction below 3/4 SM NA. For inop ALS, increase S-2 Cat A/B visibility to 1 SM, and Cat C/D to 1 1/2 SM.

MALS R

MISSED APPROACH: Climbing left turn to 2000 on RIC VORTAC R-018 to EPICS INT/ RIC 17.3 DME and hold.

ATIS 119.15 263.025	POTOMAC APP CON 126.4 282.375 (001°-185°) 126.75 307.2 (186°-360°)	RICHMOND TOWER 121.1 257.8	GND CON 121.9 348.6	CLNC DEL 127.55 348.6
-------------------------------	--	--------------------------------------	-------------------------------	---------------------------------



CATEGORY	A	B	C	D
S-2	640-3/4	478 (500-3/4)	640-1	478 (500-1)
C CIRCLING	660-1	493 (500-1)	700-1 1/2 533 (600-1 1/2)	720-2 553 (600-2)

NE-3, 10 SEP 2020 to 08 OCT 2020

NE-3, 10 SEP 2020 to 08 OCT 2020