

VORTAC RIC 114.1 Chan 88	APP CRS 188°	Rwy Idg TDZE 168 Apt Elev 168	6607
--	------------------------	---	-------------

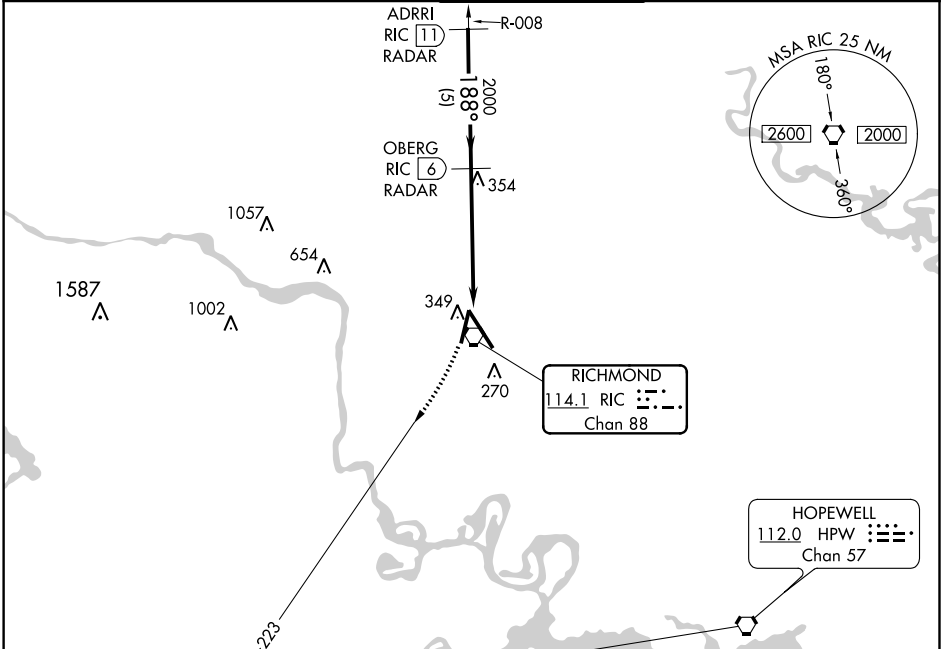
VOR RWY 20

RICHMOND INTL (RIC)

RADAR required for procedure entry. DME or RADAR required.

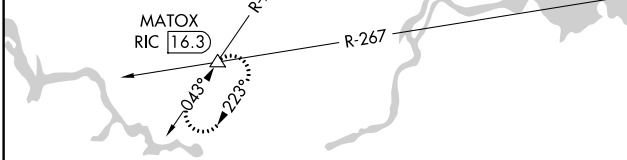
MISSED APPROACH: Climbing right turn to 2000 on RIC R-223 to MATOX INT/RIC 16.3 DME and hold.

Rwy 20 helicopter visibility reduction below 3/4 SM NA.		RICHMOND TOWER 121.1 257.8		GND CON 121.9 348.6		CLNC DEL 127.55 348.6	
ATIS 119.15 263.025	POTOMAC APP CON 126.4 282.375 (001°-185°) 126.75 307.2 (186°-360°)						

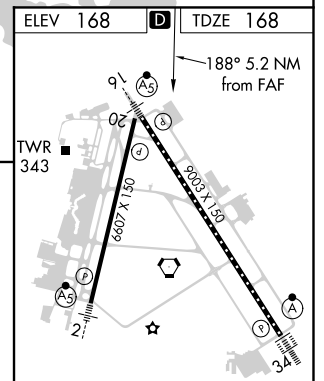


NE-3, 10 SEP 2020 to 08 OCT 2020

NE-3, 10 SEP 2020 to 08 OCT 2020



2000 RIC R-223	MATOX △	VGSi and descent angles not coincident (VGSi Angle 3.00/TCH 49).	
RIC 0.9 RIC 2.2 RIC VORTAC		OBERG RIC 6 RADAR	ADRRIC RIC 11 RADAR
1.4 3.8 NM 5 NM		188° 188° 2000	
≤ 3.26° TCH 50			



CATEGORY	A	B	C	D
S-20	660-1 492 (500-1)		660-1 3/8 492 (500-1 3/8)	
CIRCLING	660-1 492 (500-1)		700-1 1/2 532 (600-1 1/2)	720-2 552 (600-2)

TDZ/CL Rwy 34					
HIRL Rwys 2-20 and 16-34					
REIL Rwy 20					
FAF to MAP 5.2 NM					
Knots	60	90	120	150	180
Min:Sec	5:12	3:28	2:36	2:05	1:44