

LOC/DME I-SZK 111.1 Chan 48	APP CRS 072°	Rwy Idg 6800 TDZE 1175 Apt Elev 1175
-------------------------------------------------	------------------------	-----------------------------------------------------------------

LDA Z RWY 6

ROANOKE-BLACKSBURG RGNL/WOODRUM FIELD (R.O.A)

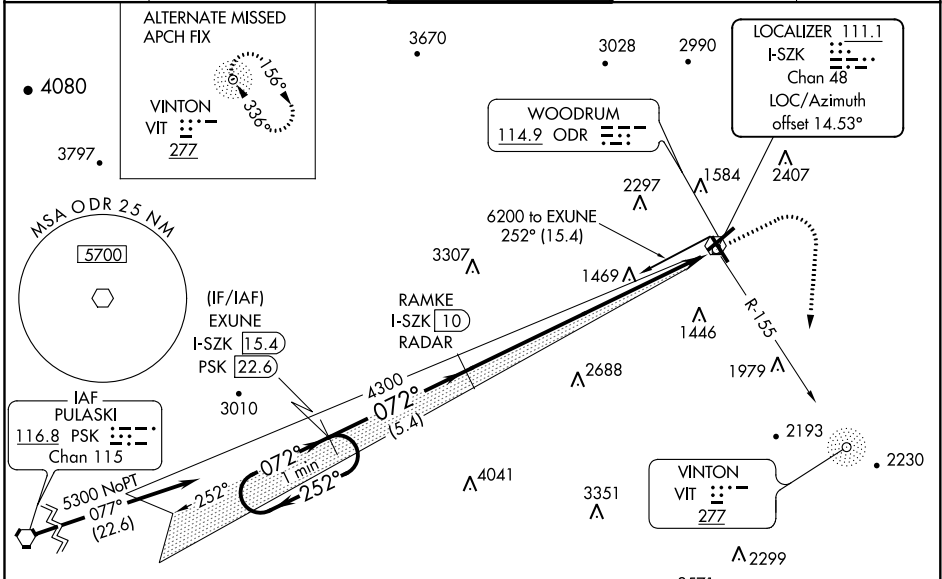
▽ For inop MALSRS, increase S-LDA/GS 6 all Cats visibility to 7/8 mile. Missed approach requires a minimum climb of 350 feet per NM to 3600, if unable to meet climb gradient, see LDA Y Rwy 6.

☁ 13°C

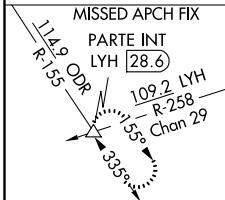
MALSRS

MISSED APPROACH: Climb to 1800 then climbing right turn to 5000 on ODR VOR R-155 to PARTE INT/LYH 28.6 DME and hold, continue climb-in-hold to 5000.

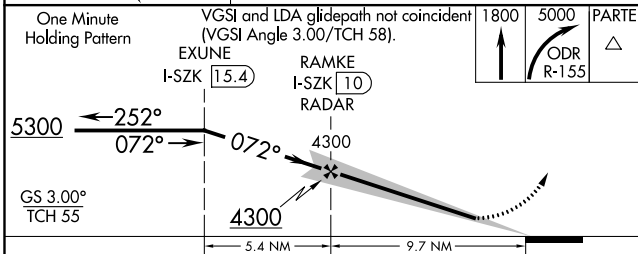
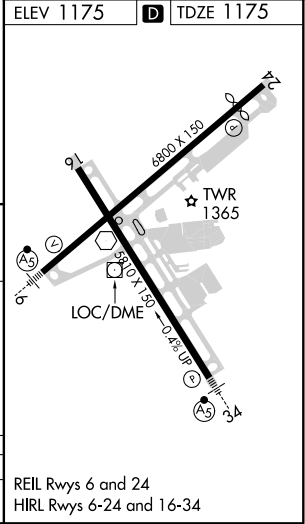
ATIS 132.375	ROANOKE APP CON 126.9 339.8	ROANOKE TOWER 118.3 257.8	GND CON 121.9 257.8	CLNC DEL 119.7
------------------------	---------------------------------------	-------------------------------------	-------------------------------	--------------------------



Procedure NA for arrivals on PSK
VORTAC airway radials 021 CW 100.



LDA/GLIDE SLOPE DME OR RADAR REQUIRED



CATEGORY	A	B	C	D
S-LDA/GS 6		1425-3/4	250 (300-3/4)	

REIL Rwy 6 and 24
HIRL Rwy 6-24 and 16-34

NE-3, 10 SEP 2020 to 08 OCT 2020

NE-3, 10 SEP 2020 to 08 OCT 2020