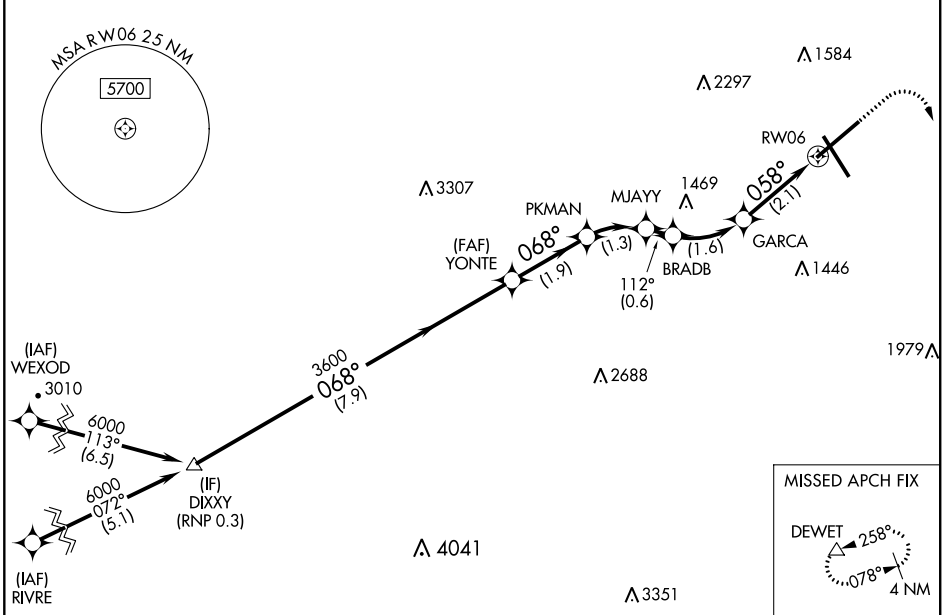


APP CRS	Rwy Idg	6800
058°	TDZE	1175
	Apt Elev	1175

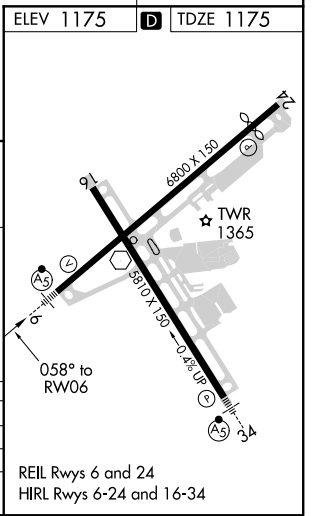
RNAV (RNP) Z RWY 6

ROANOKE-BLACKSBURG RGNL/WOODRUM FIELD (R.O.A)

RNP AR APCH. RF required.		MALSR	MISSED APPROACH: (Do not exceed 240K until DEWET) Climb to 1600 then climbing right turn to 5000 direct DEWET and hold, continue climb-in-hold to 5000. *Missed approach requires minimum climb of 370 feet per NM to 2900.		
-13°C For uncompensated Baro-VNAV systems, procedure NA below -14°C or above 54°C.					
ATIS	ROANOKE APP CON	ROANOKE TOWER	GND CON	CLNC DEL	
132.375	126.9 339.8	118.3 257.8	121.9 257.8	119.7	



	ELEV 1175	D	TDZE 1175				
	DIXXY	YONTE	PKMAN	MJAYY	BRADB	GARCA	RW06
	6000	3600	3007	2587	2396	1879	
	068°			112°		058°	
	GP 3.00°	3600					
	TCH 58						
	7.9 NM	1.9 NM	1.3 NM	0.6 NM	1.6 NM	2.1 NM	
CATEGORY	A	B	C	D			
RNP 0.20 DA*		1425-1/2	250 (300-1/2)				
RNP 0.30 DA		1605-3/4	430 (500-3/4)				



AUTHORIZATION REQUIRED

REIL Rwy 6 and 24
HIRL Rwy 6-24 and 16-34

NE-3, 10 SEP 2020 to 08 OCT 2020

NE-3, 10 SEP 2020 to 08 OCT 2020