

(SCUTA3.SCUTA) 19283

ROANOKE-BLACKSBURG RGNL/WOODRUM FIELD (R.O.A.)

# SCUTA THREE DEPARTURE (RNAV) AL-349 (FAA)

ROANOKE, VIRGINIA

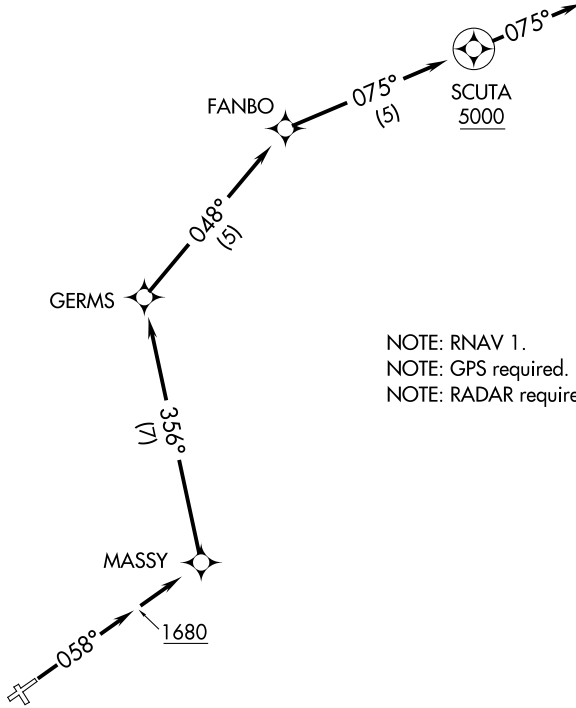
ATIS  
 132.375  
 CLNC DEL  
 119.7  
 GND CON  
 121.9 257.8  
 ROANOKE DEP CON  
 126.9 339.8  
 ROANOKE TOWER  
 118.3 257.8

**TOP ALTITUDE:**  
**5000**

### TAKEOFF MINIMUMS

Rwys 16, 24, 34: NA - Air Traffic.

Rwy 6: Standard with minimum climb of 560' per NM to 2900.



NOTE: RNAV 1.  
 NOTE: GPS required.  
 NOTE: RADAR required.

NOTE: Chart not to scale.



### DEPARTURE ROUTE DESCRIPTION

**TAKEOFF RUNWAY 6:** Climb heading 058° to 1680, then direct MASSY. Then on depicted route to cross SCUTA at or above 5000 on heading 075° for RADAR vectors. Maintain 5000 or assigned altitude, expect clearance to filed altitude 10 minutes after departure.

## SCUTA THREE DEPARTURE (RNAV)

(SCUTA3.SCUTA) 10OCT19

ROANOKE, VIRGINIA

ROANOKE-BLACKSBURG RGNL/WOODRUM FIELD (R.O.A.)

NE-3, 10 SEP 2020 to 08 OCT 2020

NE-3, 10 SEP 2020 to 08 OCT 2020