

DOCTR FOUR DEPARTURE (RNAV)

AL-443 (FAA)

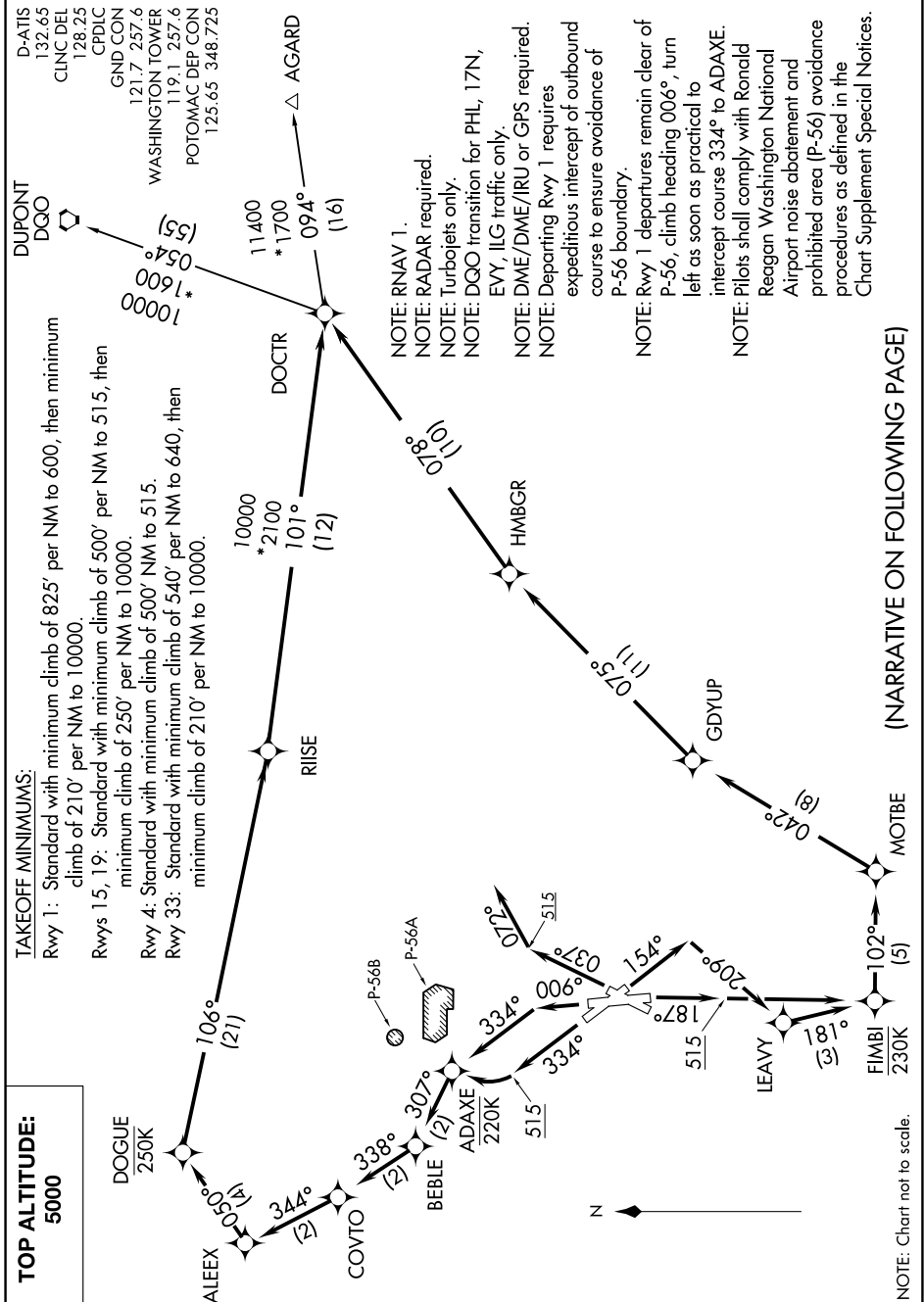
WASHINGTON, DC

NE-3, 10 SEP 2020 to 08 OCT 2020

TOP ALTITUDE:  
5000

TAKEOFF MINIMUMS:

- Rwy 1: Standard with minimum climb of 825' per NM to 600, then minimum climb of 210' per NM to 10000.
- Rwys 15, 19: Standard with minimum climb of 500' per NM to 515, then minimum climb of 250' per NM to 10000.
- Rwy 4: Standard with minimum climb of 500' NM to 515.
- Rwy 33: Standard with minimum climb of 540' per NM to 640, then minimum climb of 210' per NM to 10000.



NOTE: RNAV 1.

NOTE: RADAR required.

NOTE: Turbojets only.

NOTE: DQO transition for PHL, 17N,

EYJ, ILG traffic only.

NOTE: DME/DME/IRU or GPS required.

NOTE: Departing Rwy 1 requires

expeditious intercept of outbound

course to ensure avoidance of

P-56 boundary.

NOTE: Rwy 1 departures remain clear of

P-56, climb heading 006°, turn

left as soon as practical to

intercept course 334° to ADAXE.

NOTE: Pilots shall comply with Ronald

Reagan Washington National

Airport noise abatement and

prohibited area (P-56) avoidance

procedures as defined in the

Chart Supplement Special Notices.

NOTE: Chart not to scale.

(NARRATIVE ON FOLLOWING PAGE)

NE-3, 10 SEP 2020 to 08 OCT 2020