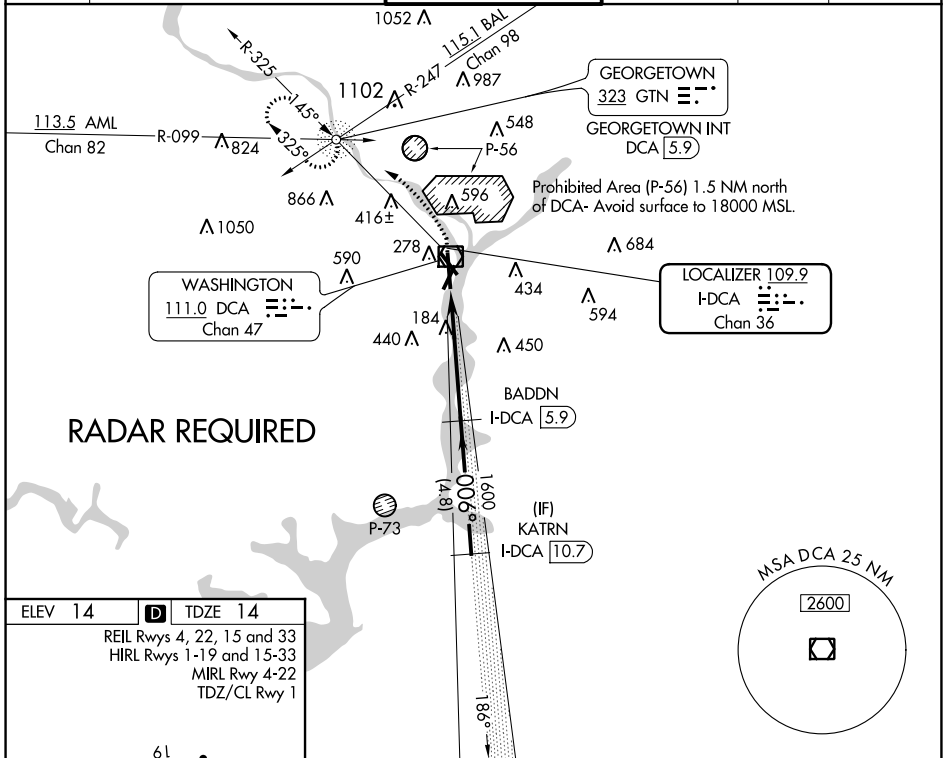


LOC/DME I-DCA <b>109.9</b> Chan <b>36</b>	APP CRS <b>006°</b>	Rwy Idg <b>6869</b> TDZE <b>14</b> Apt Elev <b>14</b>
---	------------------------	---

**ILS RWY 1 (SA CAT I)**  
RONALD REAGAN WASHINGTON NATIONAL (DCA)

DME required. Requires specific OPSPEC, MSPEC or LOA approval and use of HUD to DH.	ALS-F-2 	MISSED APPROACH: Climb to 420 then climbing left turn to 2200 on DCA VOR/DME R-325 to GTN NDB/INT/DCA 5.9 DME and hold.		

D-ATIS <b>132.65</b>	POTOMAC APP CON <b>119.85 239.25</b> (WEST/SOUTH) <b>124.2 360.8</b> (EAST)	WASHINGTON TOWER <b>119.1 257.6</b>	GND CON <b>121.7 257.6</b>	CLNC DEL <b>128.25</b>	CPDLC
-------------------------	---	--	-------------------------------	---------------------------	-------

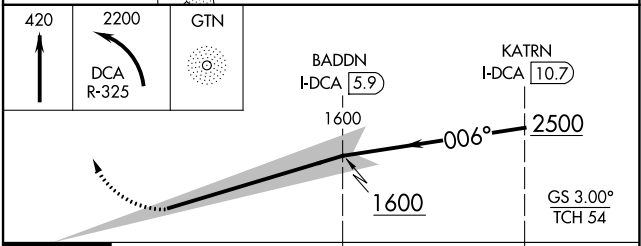
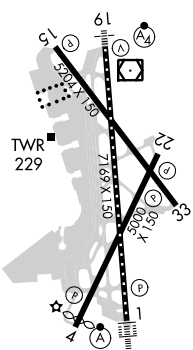


NE-3, 10 SEP 2020 to 08 OCT 2020

NE-3, 10 SEP 2020 to 08 OCT 2020

**RADAR REQUIRED**

ELEV 14	<b>D</b>	TDZE 14
REIL Rwys 4, 22, 15 and 33 HIRL Rwys 1-19 and 15-33 MRL Rwy 4-22 TDZ/CL Rwy 1		



CATEGORY	A	B	C	D
S-ILS 1	RA 156/14 150 DA 164			

**SA CATEGORY I ILS- SPECIAL AIRCREW & AIRCRAFT CERTIFICATION REQUIRED**