

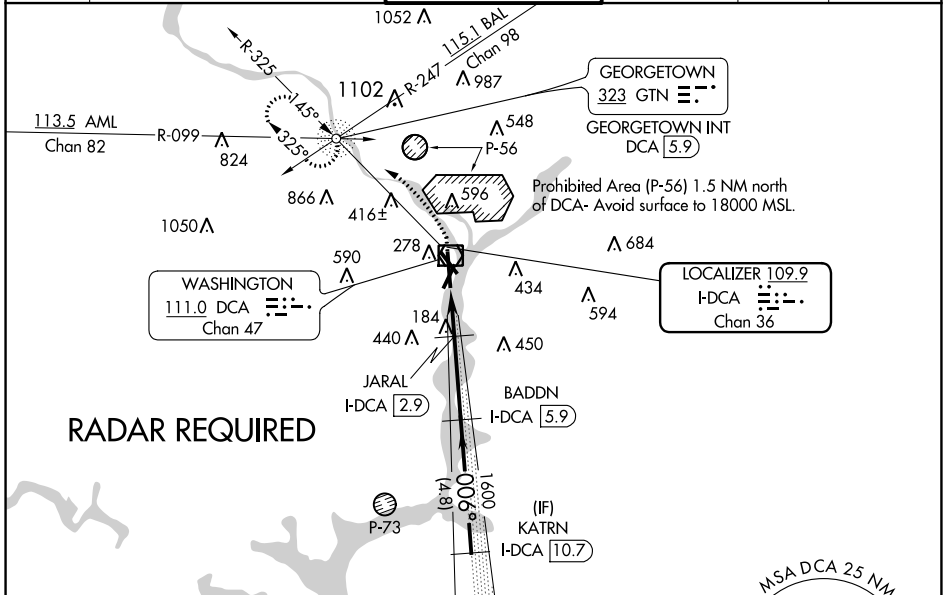
LOC/DME I-DCA 109.9 Chan 36	APP CRS 006°	Rwy Idg 6869 TDZE 14 Apt Elev 14
---	------------------------	---

ILS or LOC RWY 1

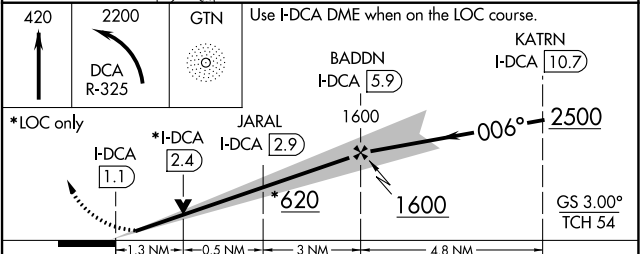
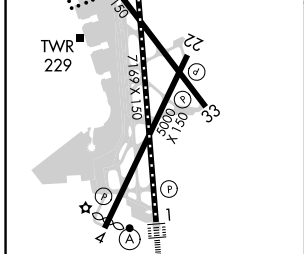
RONALD REAGAN WASHINGTON NATIONAL (DCA)

<p>Circling to Rwy 4 NA at night. Circling NA northeast of Rwy 15-33. DME required. For inop ALS, increase S-LOC 1 Cats C and D visibility to 1 1/2 mile.</p>	ALS F-2 	MISSED APPROACH: Climb to 420 then climbing left turn to 2200 on DCA VOR/DME R-325 to GTN NDB/INT/DCA 5.9 DME and hold.
---	-------------	---

D-ATIS 132.65	POTOMAC APP CON 119.85 239.25 (WEST/SOUTH) 124.2 360.8 (EAST)	WASHINGTON TOWER 119.1 257.6	GND CON 121.7 257.6	CLNC DEL 128.25	CPDLC
-------------------------	---	--	-------------------------------	---------------------------	-------



ELEV 14	D	TDZE 14
REIL Rwys 4, 22, 15 and 33 HIRL Rwys 1-19 and 15-33 MRL Rwy 4-22 TDZ/CL Rwy 1		



FAF to MAP 4.8 NM					
Knots	60	90	120	150	180
Min:Sec	4:48	3:12	2:24	1:55	1:36
C CIRCLING	720-1	706 (800-1)	480/50	840-2 1/2	900-3
			200 (200-1/2)	826 (900-2 1/2)	886 (900-3)

NE-3, 10 SEP 2020 to 08 OCT 2020

NE-3, 10 SEP 2020 to 08 OCT 2020