

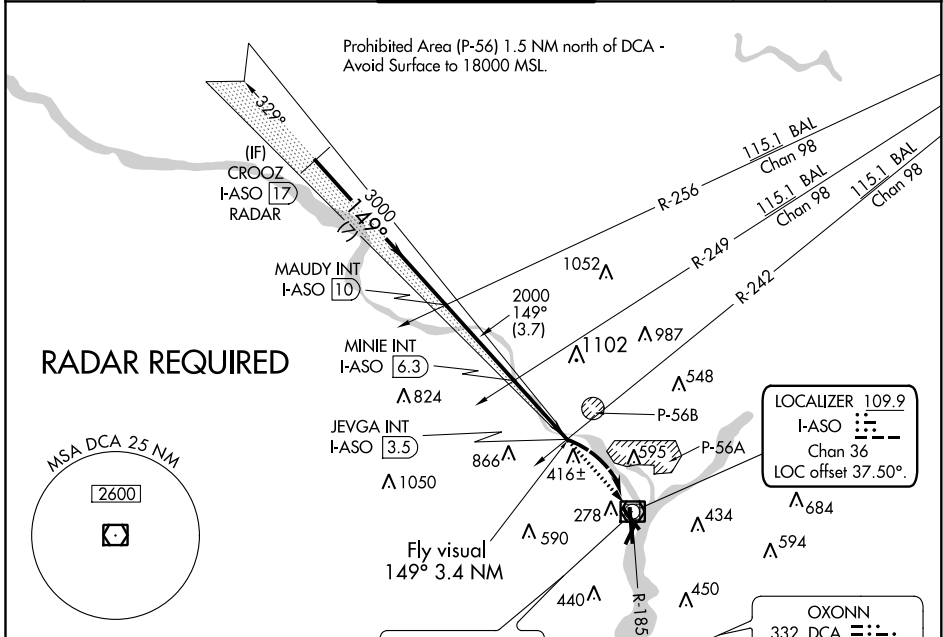
LOC/DME I-ASO <b>109.9</b> Chan <b>36</b>	APP CRS <b>149°</b>	Rwy ldg TDZE Apt Elev <b>6869</b> <b>13</b> <b>14</b>
---	------------------------	--

# LDA Y RWY 19

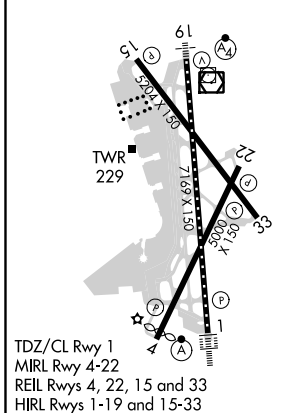
RONALD REAGAN WASHINGTON NATIONAL (DCA)

<b>∇</b> <b>▲</b> Inoperative table does not apply. Circling NA northeast of Rwy 15-33. ADF or DME required.	MALSF 	MISSED APPROACH: Climb to 1800 direct DCA VOR/DME and on DCA VOR/DME R-185 to OXONN NDB/DCA 5.6 DME and hold.
--	-----------	---

D-ATIS <b>132.65</b>	POTOMAC APP CON <b>119.85 239.25</b> (WEST/SOUTH) <b>124.2 360.8</b> (EAST)	WASHINGTON TOWER <b>119.1 257.6</b>	GND CON <b>121.7 257.6</b>	CLNC DEL <b>128.25</b>	CPDLC
-------------------------	---	--	-------------------------------	---------------------------	-------



ELEV 14	<b>D</b>	TDZE 13
---------	----------	---------



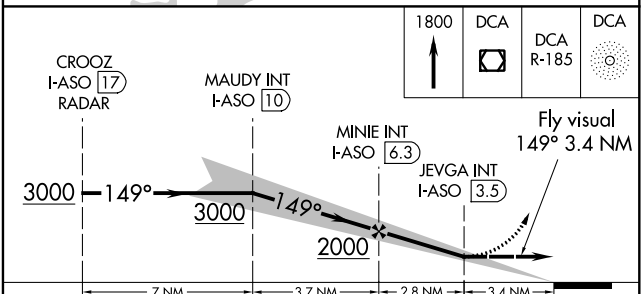
TDZ/CL Rwy 1	MIRL Rwy 4-22	REIL Rws 4, 22, 15 and 33	HIRL Rws 1-19 and 15-33
FAF to MAP 2.8 NM			
Knots	60	90	120 150 180
Min:Sec	2:48	1:52	1:24 1:07 0:56

WASHINGTON  
**111.0** DCA Chan 47

OXONN  
**332** DCA Chan 36  
LOC offset 37.50°.

OXONN  
DCA **5.6**

LOCALIZER **109.9**  
I-ASO Chan 36  
LOC offset 37.50°.



CATEGORY	A	B	C	D
S-LDA 19		1100-3	1087 (1100-3)	
<b>C</b> CIRCLING		1100-3	1086 (1100-3)	

NE-3, 10 SEP 2020 to 08 OCT 2020

NE-3, 10 SEP 2020 to 08 OCT 2020