

LOC/DME I-VVWH	APP CRS	Rwy Idg	6869
108.5	147°	TDZE	13
Chan 22		Apt Elev	14

LDA Z RWY 19

RONALD REAGAN WASHINGTON NATIONAL (DCA)

⚠ Inop table does not apply. Circling NA northeast of Rwy 15-33. Rwy 19 helicopter visibility reduction below 1 SM NA. DME required.

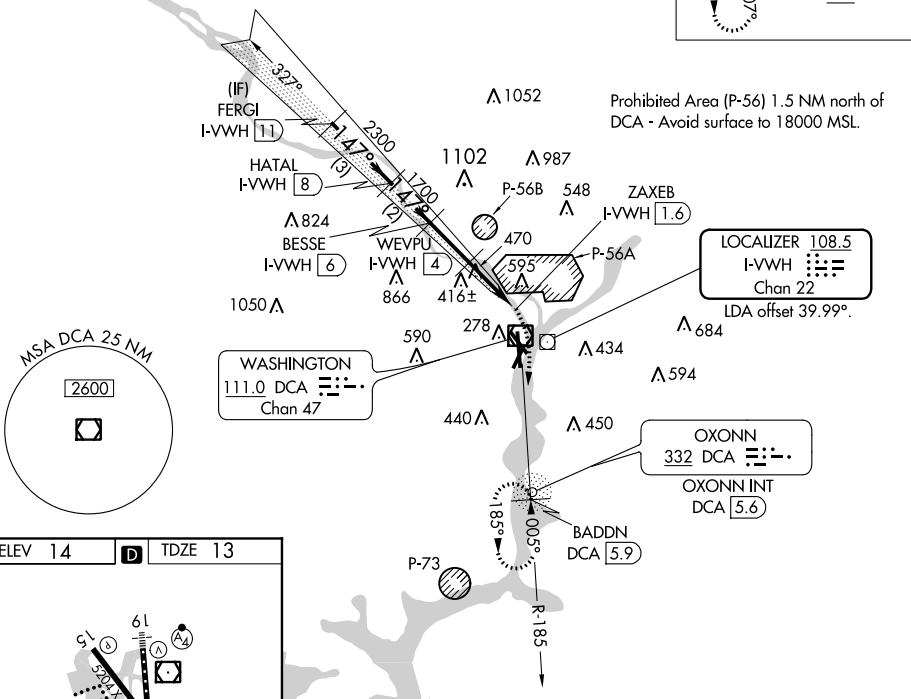
MALSF
MISSED APPROACH: Climbing right turn to 3000 on DCA VOR/DME R-185 to BADDN/DCA VOR/DME 5.9 DME and hold, continue climb-in-hold to 3000.

D-ATIS 132.65	POTOMAC APP CON 119.85 239.25 (WEST/SOUTH) 124.2 360.8 (EAST)	WASHINGTON TOWER 119.1 257.6	GND CON 121.7 257.6	CLNC DEL 128.25	CPDLC
-------------------------	---	--	-------------------------------	---------------------------	-------

ALTERNATE MISSED APCH FIX

OXONN
DCA **332**

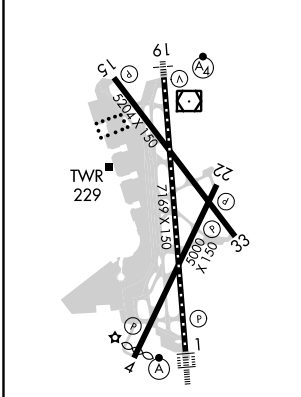
RADAR REQUIRED



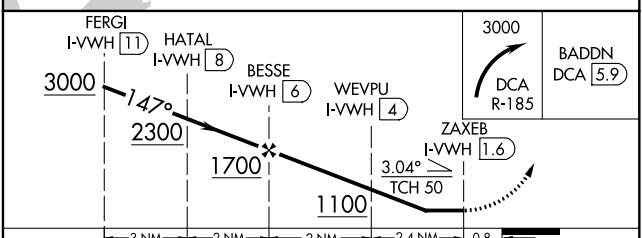
NE-3, 10 SEP 2020 to 08 OCT 2020

NE-3, 10 SEP 2020 to 08 OCT 2020

ELEV 14	D	TDZE 13
---------	----------	---------



TDZ/CL Rwy 1
MIRL Rwy 4-22
REIL Rws 4, 22, 15 and 33
HIRL Rws 1-19 and 15-33



CATEGORY	A	B	C	D
S-19	720/55	707 (800-1)	720-2	707 (800-2)
C CIRCLING	720-1	706 (800-1)	840-1½ 826 (900-1½)	900-3 886 (900-3)

LDA Z RWY 19