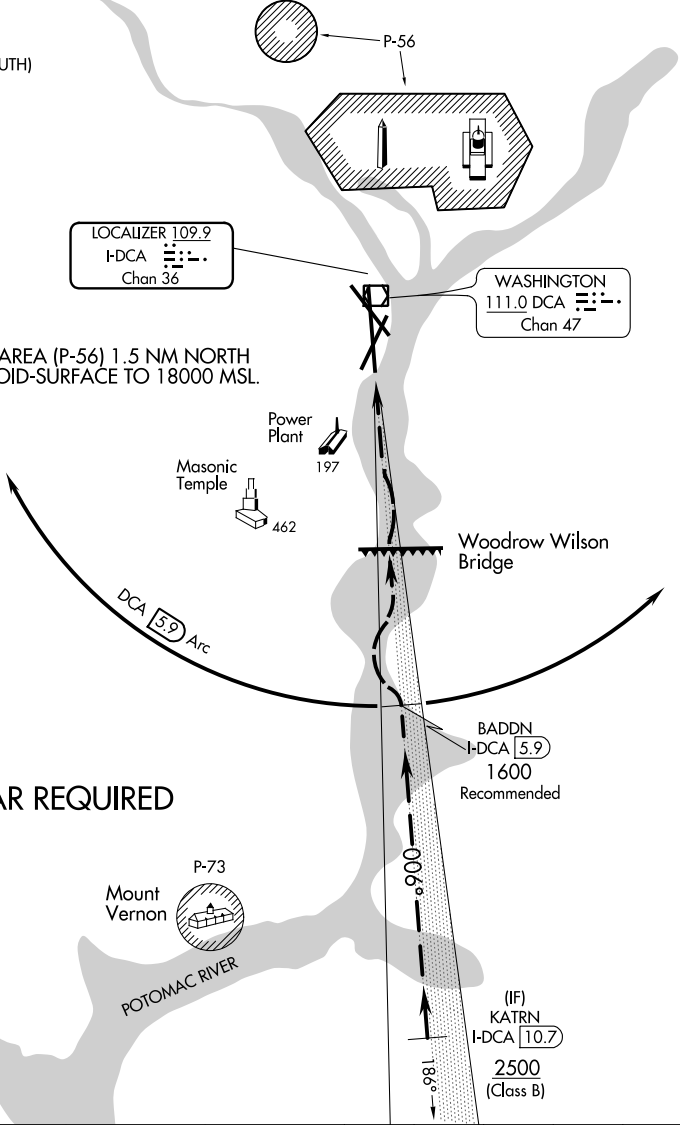


D-ATIS 132.65
 POTOMAC APP CON
 119.85 239.25 (WEST/SOUTH)
 124.2 360.8 (EAST)
 WASHINGTON TOWER
 119.1 257.6
 GND CON
 121.7 257.6
 CLNC DEL
 128.25
 CPDLC

LOCALIZER 109.9
 I-DCA Chan 36

WASHINGTON
 111.0 DCA Chan 47

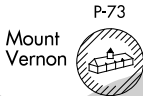
NOTE: PROHIBITED AREA (P-56) 1.5 NM NORTH OF DCA-AVOID-SURFACE TO 18000 MSL.



RADAR REQUIRED

Vertical Guidance
 Navaid and Angle:
 I-DCA 3.00°

Weather Minimums: 3000
 feet ceiling and 4 mile
 visibility.



POTOMAC RIVER

1 NM	2	3	4	5	6	7	8	9	10	11	12	13
------	---	---	---	---	---	---	---	---	----	----	----	----

Aircraft may proceed via DCA VOR/DME R-185 (inbound 005°), or via the ILS or LOC/DME RWY 1 approach to 5.9 DME, then follow the Potomac River to the airport.

NE-3, 10 SEP 2020 to 08 OCT 2020

NE-3, 10 SEP 2020 to 08 OCT 2020