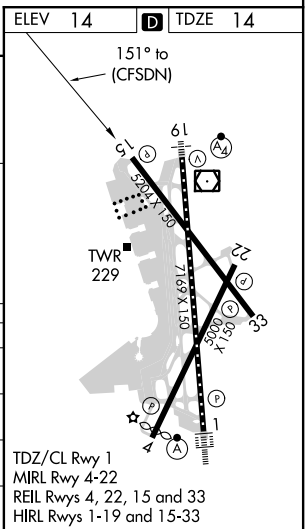
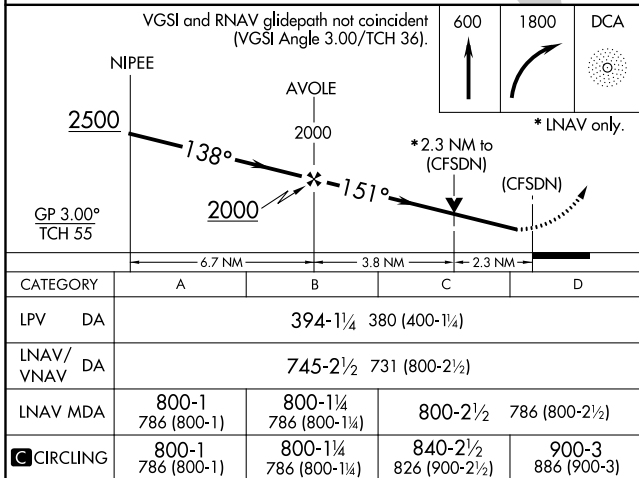
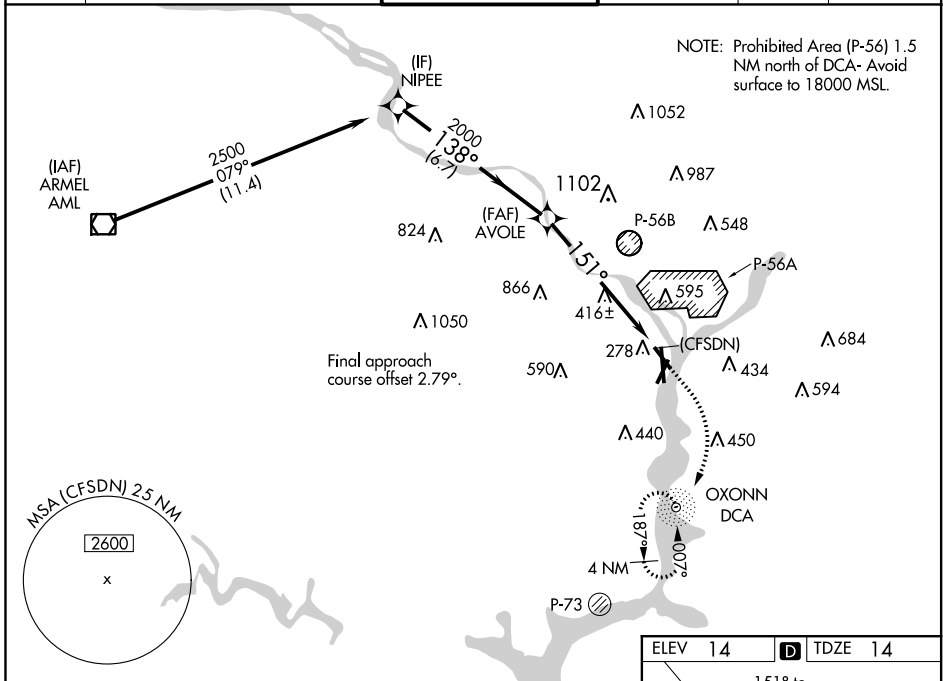


WAAS CH <b>70737</b> <b>W15A</b>	APP CRS <b>151°</b>	Rwy Idg <b>5204</b> TDZE <b>14</b> Apt Elev <b>14</b>
--	------------------------	---

# RNAV (GPS) RWY 15

RONALD REAGAN WASHINGTON NATIONAL (DCA)

RNP APCH.		MISSED APPROACH: (Do not exceed 210 KIAS until reaching 600 MSL) Climb to 600 then climbing right turn to 1800 direct DCA NDB and hold.		
<p>▼ For uncompensated Baro-VNAV systems, LNAV/VNAV NA below -9°C (16°F) or above 54°C (130°F). Circling NA northeast of Rwy 15-33.                  ▲ Rwy 15 helicopter visibility reduction below ¾ SM NA.</p>				
D-ATIS <b>132.65</b>	POTOMAC APP CON <b>119.85 239.25</b> (WEST/SOUTH) <b>124.2 360.8</b> (EAST)	WASHINGTON TOWER <b>119.1 257.6</b>	GND CON <b>121.7 257.6</b>	CLNC DEL <b>128.25</b>
		CPDLC		



NE-3, 10 SEP 2020 to 08 OCT 2020

NE-3, 10 SEP 2020 to 08 OCT 2020