

TIKEE THREE ARRIVAL (RNAV)

WASHINGTON, DC

NE-3, 10 SEP 2020 to 08 OCT 2020

ARRIVAL ROUTE DESCRIPTION

BBONE TRANSITION (BBONE.TIKEE3):

KESSEL TRANSITION (ESL.TIKEE3):

SEALZ TRANSITION (SEALZ.TIKEE3):

All aircraft types landing HEF, 2VG2, NYG, RMN, HWY, CJR, EZF: From TIKEE on track 090° to JETIS, then on heading 090° or as assigned by ATC. Expect RADAR vectors to final approach course.

Props and Turboprop aircraft landing DAA, W00, VKX, ADW, 2W5, DCA, W32: From TIKEE on track 122° to GILFF, then on track 090° to HIGPO, then on heading 090° or as assigned by ATC. Expect RADAR vectors to final approach course.

POTOMAC APP CON
120.45 306.925
DCA D-ATIS
132.65
KADW D-ATIS
113.1 251.05
KDAW ATIS
128.175

NOTE: RADAR required.

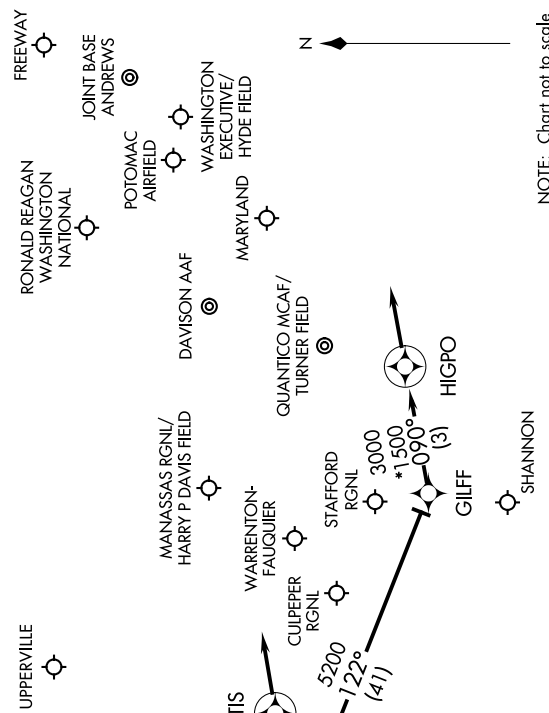
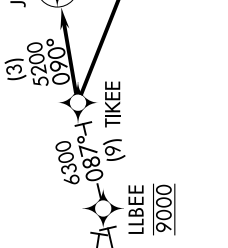
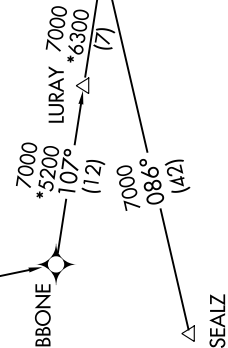
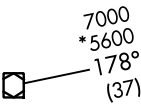
NOTE: RNAV 1.

NOTE: DME/DME/IRU or GPS required.

NOTE: Procedure available to all type aircraft landing the following airports: 2VG2, CJR, HWY, HEF, RMN, EZF, NYG.

NOTE: Props or Turboprop aircraft only landing the following airports: DAA, 2W5, VKX, W32, W00, DCA, ADW.

KESSEL
ESL
FL190



NOTE: Chart not to scale

TIKEE THREE ARRIVAL (RNAV)

WASHINGTON, DC

NE-3, 10 SEP 2020 to 08 OCT 2020