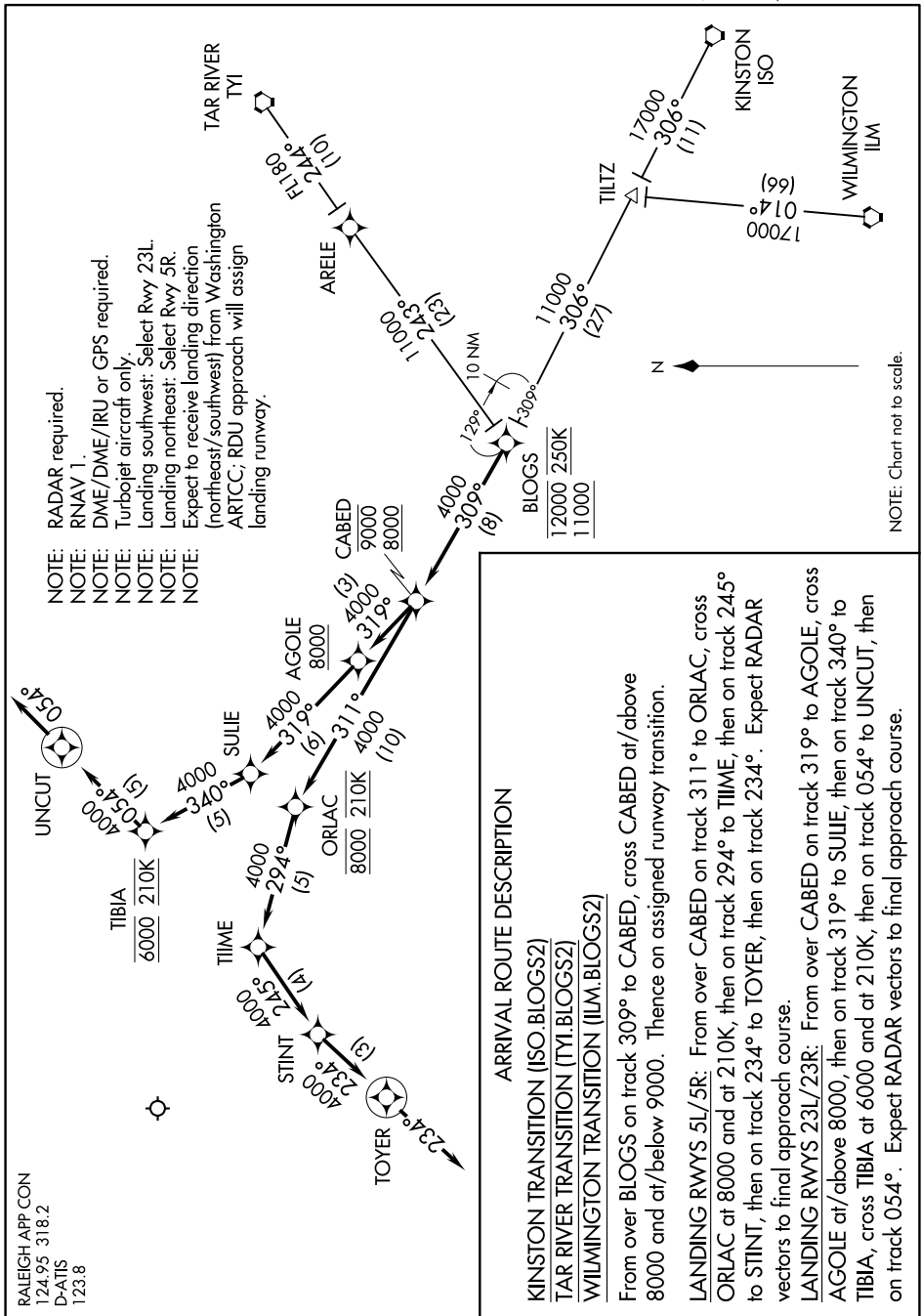


BLOGS TWO ARRIVAL (RNAV)

SE-2, 10 SEP 2020 to 08 OCT 2020



NOTE: RADAR required.
 NOTE: RNAV 1.
 NOTE: DME/DME/IRU or GPS required.
 NOTE: Turbojet aircraft only.
 NOTE: Landing southwest: Select Rwy 23L.
 NOTE: Landing northeast: Select Rwy 5R.
 NOTE: Expect to receive landing direction (northeast/southwest) from Washington ARTCC; RDU approach will assign landing runway.

NOTE: Chart not to scale.

RALEIGH APP CON
 124.95 318.2
 D-ATIS
 123.8

BLOGS TWO ARRIVAL (RNAV)

(BLOGS.BLOGS2) 24MAY18

SE-2, 10 SEP 2020 to 08 OCT 2020