

BLUE DEVIL SEVEN DEPARTURE

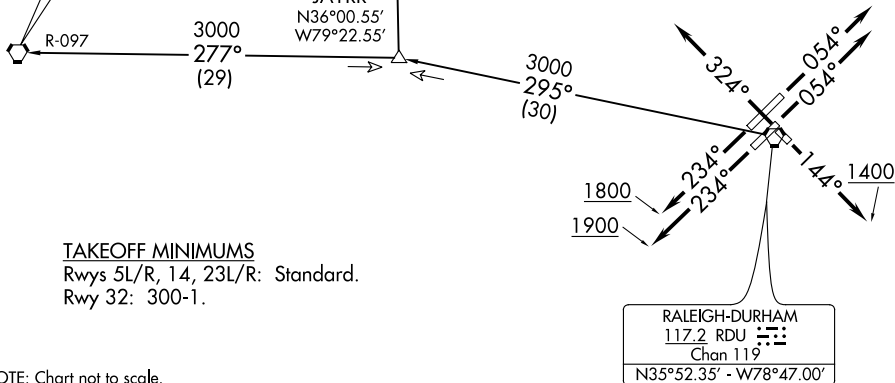
D-ATIS
123.8
CLNC DEL
120.1
CPDLC
RALEIGH DEP CON
132.35 256.9

DANVILLE
113.1 DAN
N36°34.13' - W79°20.20'
L-26-36

GREENSBORO
116.2 GSO
Chan 109
N36°02.74' - W79°58.58'
L-25-36, H-9-12

JAYRR
N36°00.55'
W79°22.55'

NOTE: RADAR required.
NOTE: Turbojets NA.



TAKEOFF MINIMUMS
Rwys 5L/R, 14, 23L/R: Standard.
Rwy 32: 300-1.

NOTE: Chart not to scale.

SE-2, 10 SEP 2020 to 08 OCT 2020

SE-2, 10 SEP 2020 to 08 OCT 2020



DEPARTURE ROUTE DESCRIPTION

- TAKEOFF RUNWAYS 5L/R: Climb on heading 054°, thence. . .
- TAKEOFF RUNWAY 14: Climb on heading 144° to 1400, thence. . .
- TAKEOFF RUNWAY 23L: Climb on heading 234° to 1900, thence. . .
- TAKEOFF RUNWAY 23R: Climb on heading 234° to 1800, thence. . .
- TAKEOFF RUNWAY 32: Climb on heading 324°, thence. . .

. . . or as assigned for vectors to assigned transition. Expect clearance to filed altitude/flight level ten minutes after departure.

DANVILLE TRANSITION (BLUE7.DAN): From over RDU VORTAC on RDU R-295 to JAYRR then on DAN R-189 to DAN VOR.

GREENSBORO TRANSITION (BLUE7.GSO): From over RDU VORTAC on RDU R-295 to JAYRR then on GSO R-097 to GSO VORTAC.