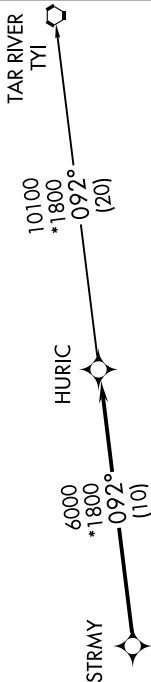
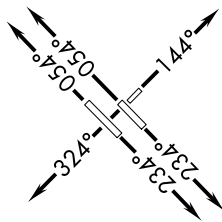


HURIC THREE DEPARTURE (RNAV)

SE-2, 10 SEP 2020 to 08 OCT 2020

TOP ALTITUDE: (JETS) 7000/(PROPS) 2000

- D-ATIS 123.8
- CLNC DEL 120.1
- GPDIR
- GND CON 121.9 348.6 (EAST)
(Rwys 5R-23L, 14-32)
- 121.7 348.6 (WEST)
(Rwy 5L-23R)
- RALEIGH TOWER 127.45 257.8 (EAST)
(Rwys 5R-23L, 14-32)
- 119.3 257.8 (WEST)
(Rwy 5L-23R)
- RALEIGH DEP CON 125.3 353.675



NOTE: Chart not to scale.

DEPARTURE ROUTE DESCRIPTION

TAKEOFF RWYS 5L/5R: Climb heading 054° or as assigned by ATC, expect RADAR vectors to STRMY, thence. . . .

TAKEOFF Rwy 14: Climb heading 144° or as assigned by ATC, expect RADAR vectors to STRMY, thence. . . .

TAKEOFF RWYS 23L/23R: Climb heading 234° or as assigned by ATC, expect RADAR vectors to STRMY, thence. . . .

TAKEOFF Rwy 32: Climb heading 324° or as assigned by ATC, expect RADAR vectors to STRMY, thence. . . .

. . . on track 092° to HURIC, turbojets maintain 7000, propellers maintain 2000. Expect clearance to filed altitude within ten minutes after departure.

TAR RIVER TRANSITION (HURIC3.TYI)

TAKEOFF MINIMUMS

- Rwys 5L, 5R, 14, 23R: Standard with minimum climb of 500' per NM to 940.
- Rwy 23L: Standard with minimum climb of 500' per NM to 1100.
- Rwy 32: 300-1 with minimum climb of 500' per NM to 940.

- NOTE: Transponder code will be assigned via PDC or Raleigh clearance delivery.
- NOTE: If unable to accept climb rate, advise ATC on initial contact.
- NOTE: RNAV 1.
- NOTE: DME/DME/IRU or GPS required.
- NOTE: RADAR required.

SE-2, 10 SEP 2020 to 08 OCT 2020