

LOC/DME I-DMP 111.7 Chan 54	APP CRS 234°	Rwy Idg TDZE Apt Elev 10000 409 435
---	------------------------	---

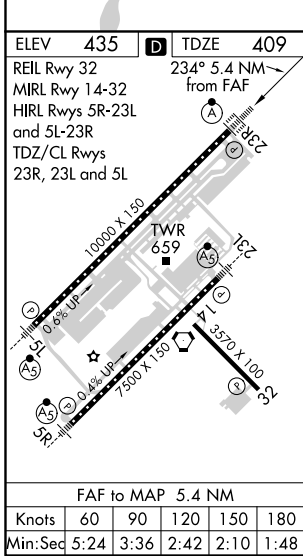
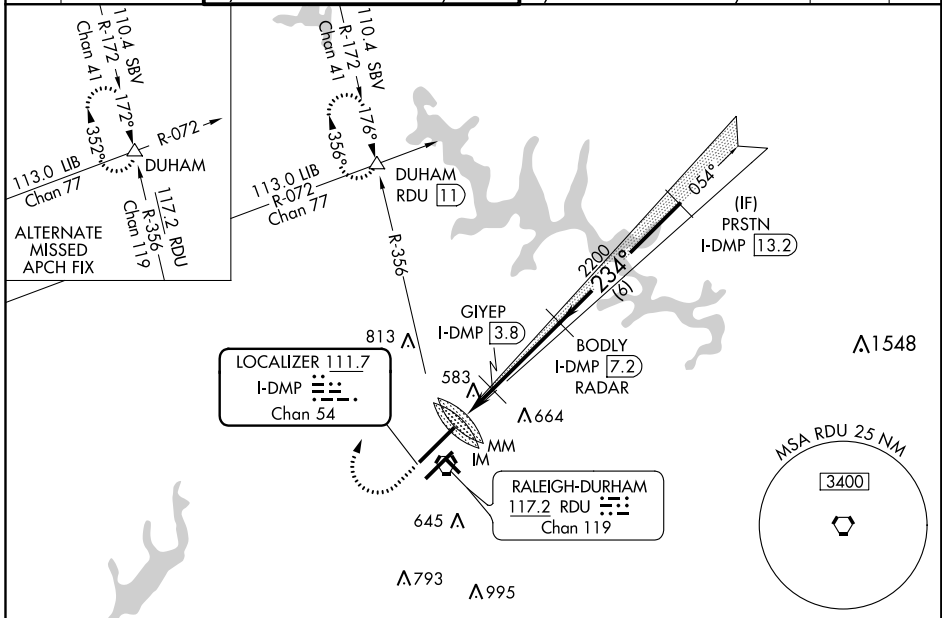
ILS or LOC RWY 23R

RALEIGH-DURHAM INTL (RDU)

RADAR required for procedure entry, DME or RADAR required. ALSF-2

MISSED APPROACH: Climb to 1000 then climbing right turn to 2200 on heading 030° and on RDU VORTAC R-356 to DUHAM INT/RDU 11 DME and hold.

D-ATIS 123.8	RALEIGH APP CON 127.675 307.9	(EAST) RALEIGH TOWER (WEST) 127.45 257.8 119.3 257.8 Rwys 5R-23L and 1-4-32 Rwy 5L-23R	(EAST) GND CON (WEST) 121.9 348.6 121.7 348.6 Rwys 5R-23L and 1-4-32 Rwy 5L-23R	CLNC DEL 120.1	CPDLC
------------------------	---	--	---	--------------------------	-------



ELEV 435	TDZE 409	234° 5.4 NM from FAF
REIL Rwy 32	MIRL Rwy 1-4-32	HIRL Rwys 5R-23L and 5L-23R
TDZ/CL Rwys 23R, 23L and 5L		
1000	2200	DUHAM
hdg 030°	RDU R-356	△
*LOC only.	VGSI and ILS glidepath not coincident (VGSI Angle 3.00/TCH 69).	BODLY I-DMP [7.2] RADAR
		PRSTN I-DMP [13.2]
		3000
		234°
		2200
		GS 3.00° TCH 56
		6 NM
		3.4 NM
		0.7
		0.9
		0.1
		0.3
		0.5
		0.7
		0.9
		1.1
		1.3
		1.5
		1.7
		1.9
		2.1
		2.3
		2.5
		2.7
		2.9
		3.1
		3.3
		3.5
		3.7
		3.9
		4.1
		4.3
		4.5
		4.7
		4.9
		5.1
		5.3
		5.5
		5.7
		5.9
		6.1
		6.3
		6.5
		6.7
		6.9
		7.1
		7.3
		7.5
		7.7
		7.9
		8.1
		8.3
		8.5
		8.7
		8.9
		9.1
		9.3
		9.5
		9.7
		9.9
		10.1
		10.3
		10.5
		10.7
		10.9
		11.1
		11.3
		11.5
		11.7
		11.9
		12.1
		12.3
		12.5
		12.7
		12.9
		13.1
		13.3
		13.5
		13.7
		13.9
		14.1
		14.3
		14.5
		14.7
		14.9
		15.1
		15.3
		15.5
		15.7
		15.9
		16.1
		16.3
		16.5
		16.7
		16.9
		17.1
		17.3
		17.5
		17.7
		17.9
		18.1
		18.3
		18.5
		18.7
		18.9
		19.1
		19.3
		19.5
		19.7
		19.9
		20.1
		20.3
		20.5
		20.7
		20.9
		21.1
		21.3
		21.5
		21.7
		21.9
		22.1
		22.3
		22.5
		22.7
		22.9
		23.1
		23.3
		23.5
		23.7
		23.9
		24.1
		24.3
		24.5
		24.7
		24.9
		25.1
		25.3
		25.5
		25.7
		25.9
		26.1
		26.3
		26.5
		26.7
		26.9
		27.1
		27.3
		27.5
		27.7
		27.9
		28.1
		28.3
		28.5
		28.7
		28.9
		29.1
		29.3
		29.5
		29.7
		29.9
		30.1
		30.3
		30.5
		30.7
		30.9
		31.1
		31.3
		31.5
		31.7
		31.9
		32.1
		32.3
		32.5
		32.7
		32.9
		33.1
		33.3
		33.5
		33.7
		33.9
		34.1
		34.3
		34.5
		34.7
		34.9
		35.1
		35.3
		35.5
		35.7
		35.9
		36.1
		36.3
		36.5
		36.7
		36.9
		37.1
		37.3
		37.5
		37.7
		37.9
		38.1
		38.3
		38.5
		38.7
		38.9
		39.1
		39.3
		39.5
		39.7
		39.9
		40.1
		40.3
		40.5
		40.7
		40.9
		41.1