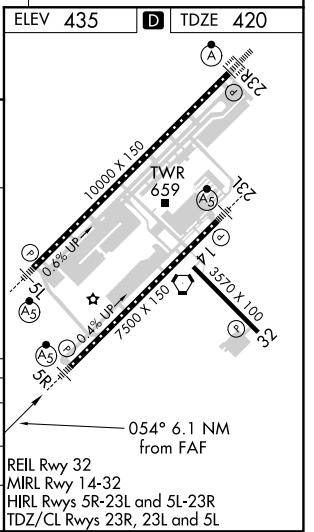
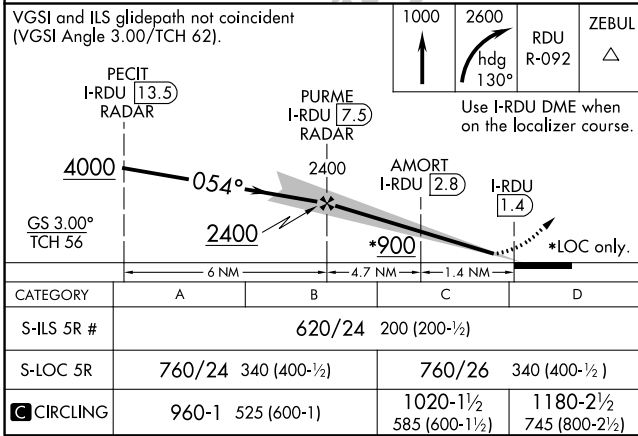
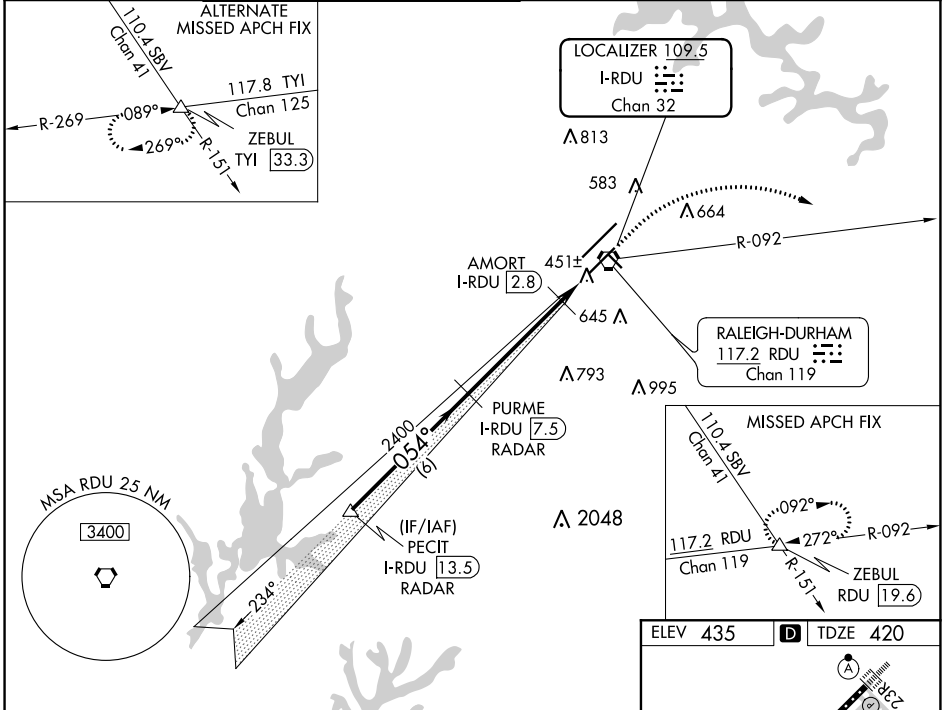


LOC/DME I-RDU <b>109.5</b> Chan 32	APP CRS <b>054°</b>	Rwy Idg <b>7500</b> TDZE <b>420</b> Apt Elev <b>435</b>
--	------------------------	---

# ILS or LOC RWY 5R

RALEIGH-DURHAM INTL (RDU)

RADAR required for procedure entry. DME required for LOC only.		MALSR 		MISSED APPROACH: Climb to 1000 then climbing right turn to 2600 on heading 130° and on RDU VORTAC R-092 to ZEBUL INT/RDU 19.6 DME and hold.	
Simultaneous approach authorized. # RVR 1800 authorized with use of FD or AP or HUD to DA.					
D-ATIS <b>123.8</b>	RALEIGH APP CON <b>127.675 307.9</b>	(EAST) RALEIGH TOWER (WEST) <b>127.45 257.8</b> Rwys 5R-23L and 14-32	(WEST) <b>119.3 257.8</b> Rwy 5L-23R	(EAST) GND CON (WEST) <b>121.9 348.6</b> Rwys 5R-23L and 14-32	(WEST) <b>121.7 348.6</b> Rwy 5L-23R
CLNC DEL <b>120.1</b>					CPDLC



SE-2, 10 SEP 2020 to 08 OCT 2020

SE-2, 10 SEP 2020 to 08 OCT 2020