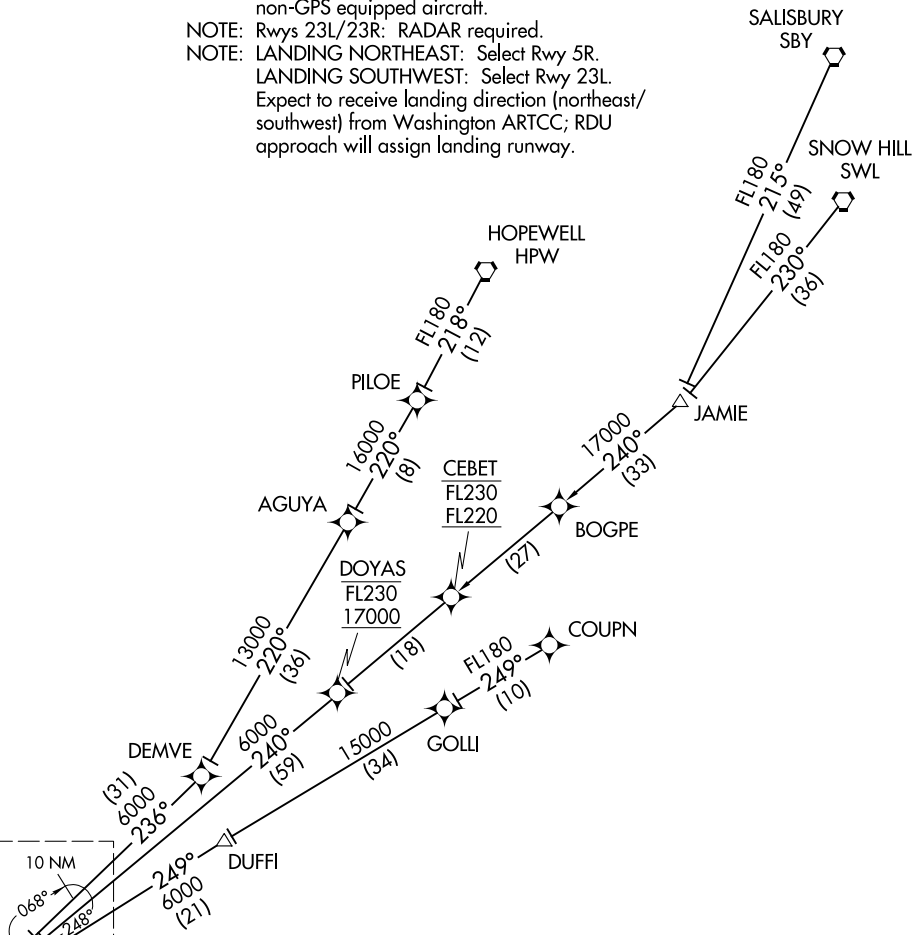


KAROO TWO ARRIVAL(RNAV) Transition Routes

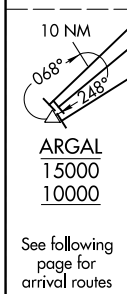
RALEIGH APP CON
124.95 318.2
D-ATIS
123.8

- NOTE: RNAV 1.
 - NOTE: DME/DME/IRU or GPS required.
 - NOTE: Turbojet aircraft only.
 - NOTE: Rwy 5L/5R: RADAR required for non-GPS equipped aircraft.
 - NOTE: Rwy 23L/23R: RADAR required.
 - NOTE: LANDING NORTHEAST: Select Rwy 5R.
 - NOTE: LANDING SOUTHWEST: Select Rwy 23L.
- Expect to receive landing direction (northeast/southwest) from Washington ARTCC; RDU approach will assign landing runway.



SE-2, 10 SEP 2020 to 08 OCT 2020

SE-2, 10 SEP 2020 to 08 OCT 2020



(NARRATIVE ON FOLLOWING PAGE)
(NOTES CONTINUED ON FOLLOWING PAGE)

COUPN TRANSITION (COUPN.KAROO2)
HOPEWELL TRANSITION (HPW.KAROO2)
SALISBURY TRANSITION (SBY.KAROO2)
SNOW HILL TRANSITION (SWL.KAROO2)

NOTE: Chart not to scale.