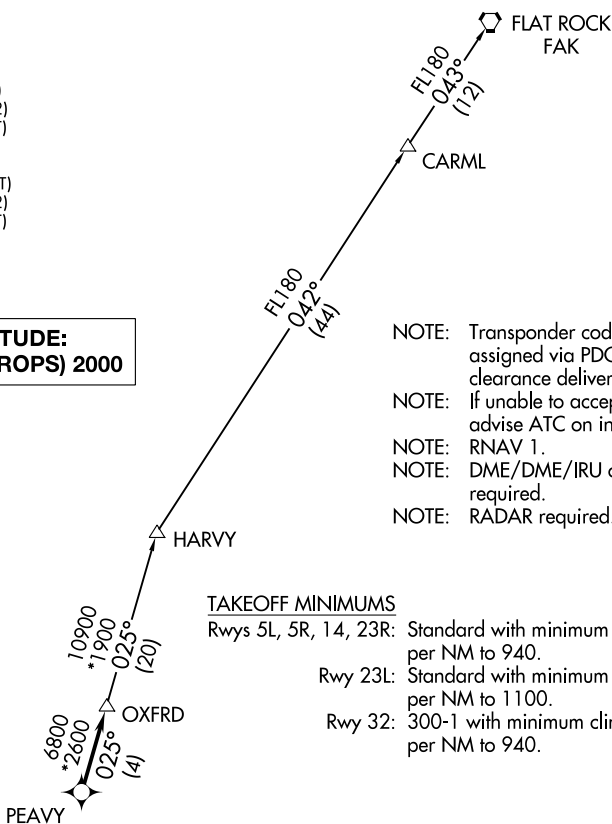


# OXFRD THREE DEPARTURE (RNAV)

D-ATIS 123.8  
 CLNC DEL 120.1  
 CPDLC  
 GND CON  
 121.9 348.6 (EAST)  
 (Rwys 5R-23L, 14-32)  
 121.7 348.6 (WEST)  
 (Rwy 5L-23R)  
 RALEIGH TOWER  
 127.45 257.8 (EAST)  
 (Rwys 5R-23L, 14-32)  
 119.3 257.8 (WEST)  
 (Rwy 5L-23R)  
 RALEIGH DEP CON  
 132.35 256.9

**TOP ALTITUDE:  
 (JETS) 7000/(PROPS) 2000**

- NOTE: Transponder code will be assigned via PDC or Raleigh clearance delivery.
- NOTE: If unable to accept climb rate, advise ATC on initial contact.
- NOTE: RNAV 1.
- NOTE: DME/DME/IRU or GPS required.
- NOTE: RADAR required.



### TAKEOFF MINIMUMS

- Rwys 5L, 5R, 14, 23R: Standard with minimum climb of 500' per NM to 940.
- Rwy 23L: Standard with minimum climb of 500' per NM to 1100.
- Rwy 32: 300-1 with minimum climb of 500' per NM to 940.



### DEPARTURE ROUTE DESCRIPTION

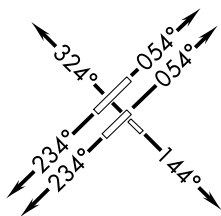
**TAKEOFF RWYS 5L/5R:** Climb heading 054° or as assigned by ATC, expect RADAR vectors to PEAVY, thence. . . .

**TAKEOFF RWY 14:** Climb heading 144° or as assigned by ATC, expect RADAR vectors to PEAVY, thence. . . .

**TAKEOFF RWYS 23L/23R:** Climb heading 234° or as assigned by ATC, expect RADAR vectors to PEAVY, thence. . . .

**TAKEOFF RWY 32:** Climb heading 324° or as assigned by ATC, expect RADAR vectors to PEAVY, thence. . . .

. . . .on track 025° to OXFRD, turbojets maintain 7000, propellers maintain 2000. Expect clearance to filed altitude within ten minutes after departure.



NOTE: Chart not to scale.

**FLAT ROCK TRANSITION (OXFRD3.FAK)**