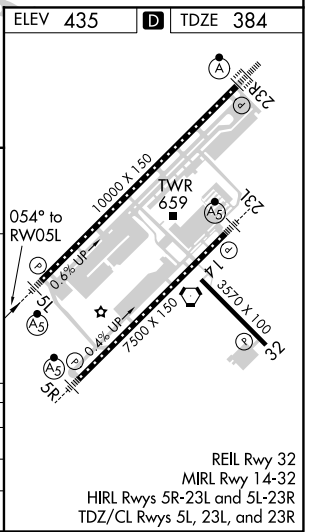
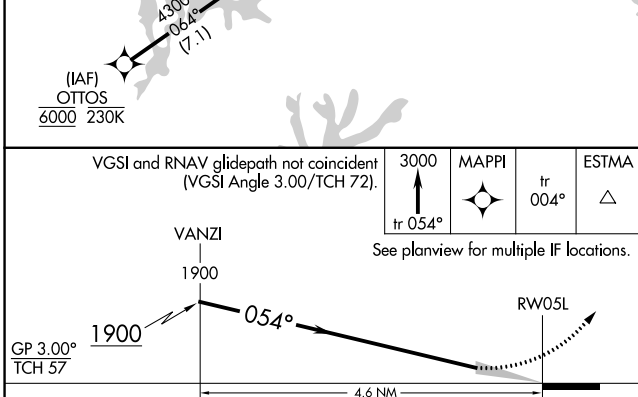
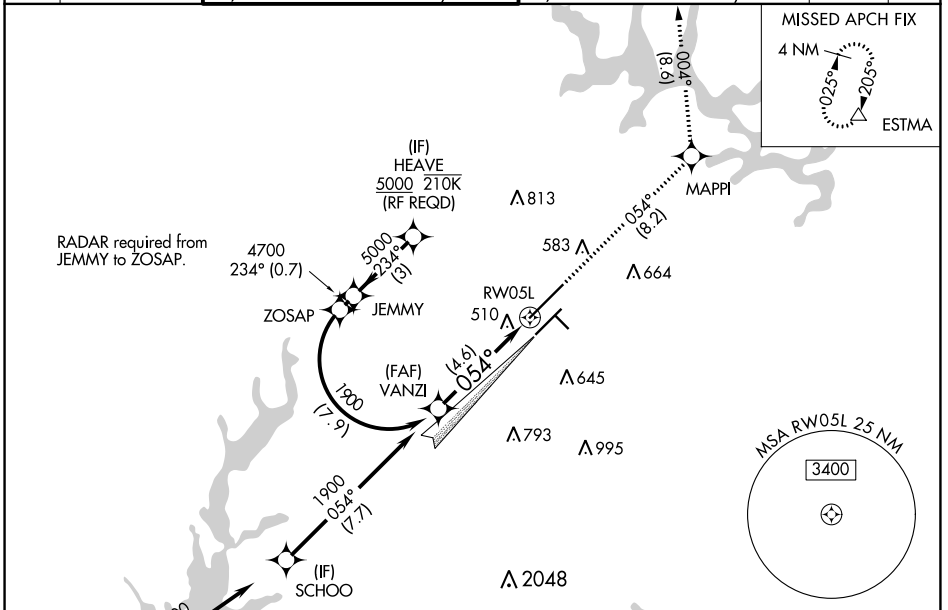


APP CRS	Rwy Idg	<b>10000</b>
<b>054°</b>	TDZE	<b>384</b>
	Apt Elev	<b>435</b>

# RNAV (RNP) Z RWY 5L

RALEIGH-DURHAM INTL (RDU)

RNP AR APCH.		MALSR 		MISSED APPROACH: Climb to 3000 on track 054° to MAPPI and on track 004° to ESTMA and hold.	
▽ For uncompensated Baro-VNAV systems, LNAV/VNAV NA below -9°C or above 47°C. Simultaneous approach authorized. Use of FD or AP providing RNAV track guidance required during simultaneous operations. For inop ALS, increase RNP 0.10 all Cats visibility to RVR 6000 and RNP 0.30 all Cats visibility to 1%.					
D-ATIS	RALEIGH APP CON	(EAST) RALEIGH TOWER (WEST)	(EAST) GND CON (WEST)	CLNC DEL	CPDLC
<b>123.8</b>	<b>127.675 307.9</b>	<b>127.45 257.8</b> Rwys 5R-23L and 1-4-32	<b>119.3 257.8</b> Rwy 5L-23R	<b>121.9 348.6</b> Rwys 5R-23L and 1-4-32	<b>121.7 348.6</b> Rwy 5L-23R



GP 3.00°	1900	054°	RW05L	
TCH 57				
CATEGORY	A	B	C	D
RNP 0.10 DA		727/30	343 (300-5%)	
RNP 0.30 DA		821/50	437 (400-1)	

**AUTHORIZATION REQUIRED**

REIL Rwy 32  
MIRL Rwy 1-4-32  
HIRL Rwys 5R-23L and 5L-23R  
TDZ/CL Rwys 5L, 23L, and 23R

SE-2, 10 SEP 2020 to 08 OCT 2020

SE-2, 10 SEP 2020 to 08 OCT 2020