

APP CRS	Rwy Idg	7500
054°	TDZE	420
	Apt Elev	435

RNAV (RNP) Z RWY 5R

RALEIGH-DURHAM INTL (RDU)

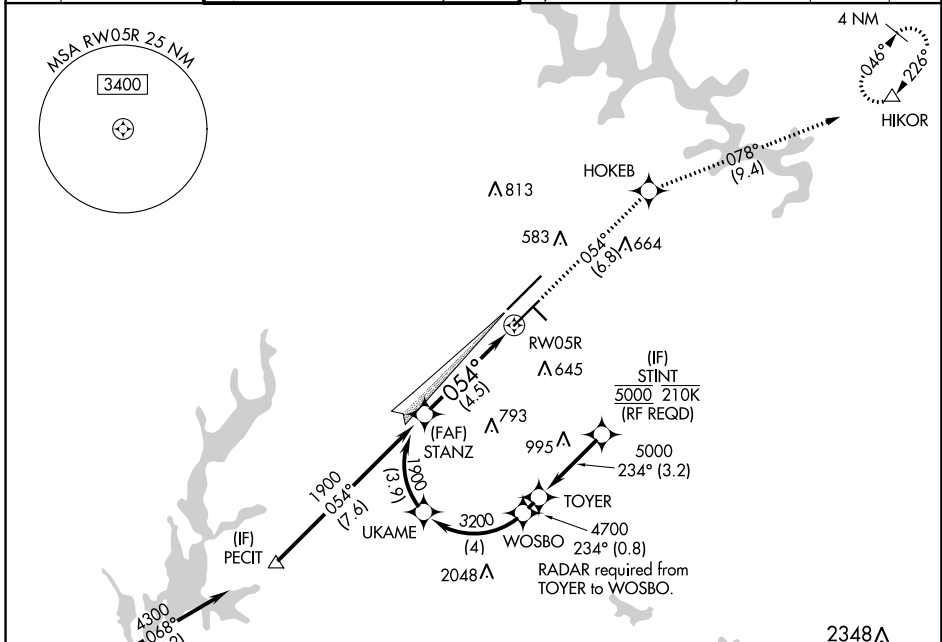
RNP AR APCH.

▼ For uncompensated Baro-VNAV systems, LNAV/VNAV NA below -9°C or above 54°C. Use of FD or AP providing RNAV track guidance required during simultaneous operations. For inop ALS, increase RNP 0.30 all Cats visibility to RVR 4500. Simultaneous approach authorized, except for arrivals at STINT.

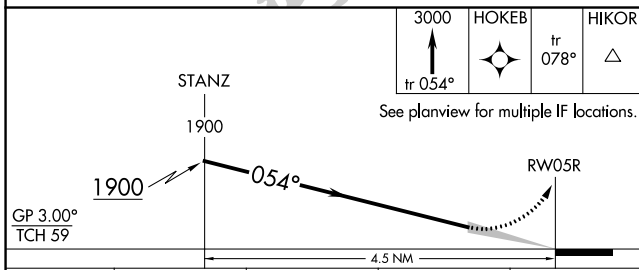
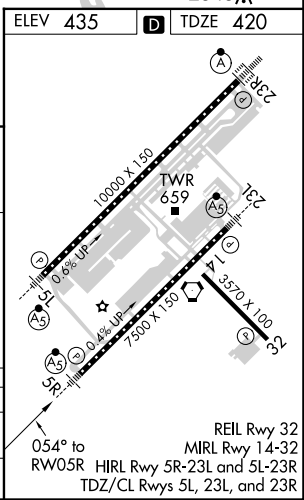


MISSED APPROACH: Climb to 3000 on track 054° to HOKEB and on track 078° to HIKOR and hold.

D-ATIS	RALEIGH APP CON	(EAST) RALEIGH TOWER (WEST)	(EAST) GND CON	(WEST)	CLNC DEL	CPDLC
123.8	127.675 307.9	127.45 257.8 Rwys 5R-23L and 14-32	119.3 257.8 Rwy 5L-23R	121.9 348.6 Rwys 5R-23L and 14-32	121.7 348.6 Rwy 5L-23R	120.1



(IAF) OTOTOS 6000 230K	(IF) PECIT	UKAME	STANZ (FAF)	TOYER	WOSBO	STINT (IF)	HOKEB	HIKOR
		1900	1900	4700	2048	5000 210K (RF REQD)	3000	3000
		054° (7.2)	054° (4.5)	234° (0.8)	234° (3.2)	054° (6.8)	078°	078°



CATEGORY	A	B	C	D
RNP 0.30 DA		817/35	397 (400-%)	

AUTHORIZATION REQUIRED

SE-2, 10 SEP 2020 to 08 OCT 2020

SE-2, 10 SEP 2020 to 08 OCT 2020