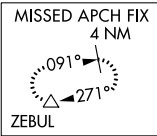
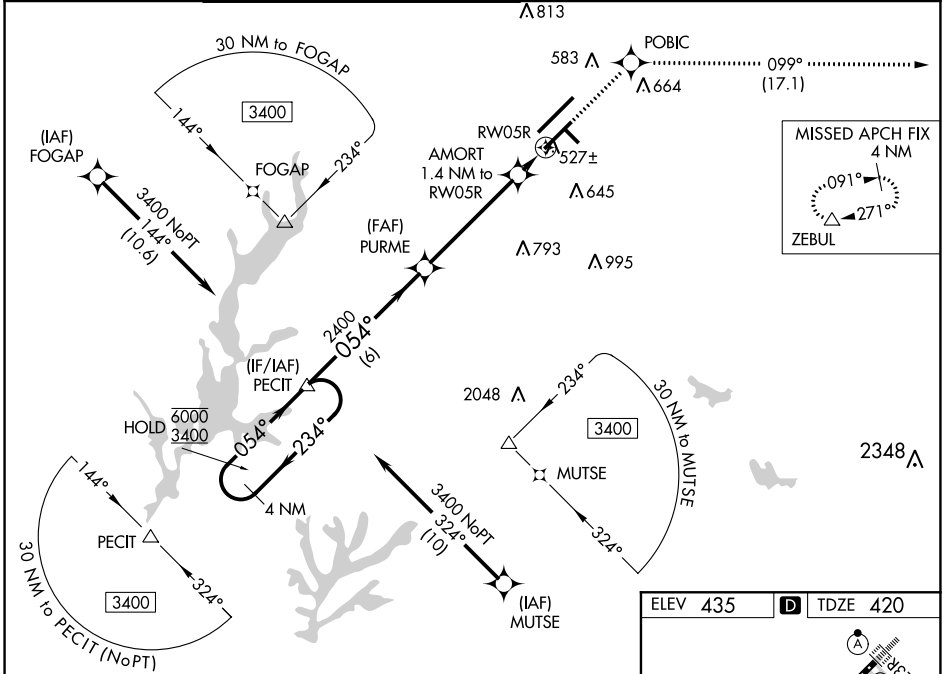


WAAS CH 90213 W05B	APP CRS 054°	Rwy ldg 7500 TDZE 420 Apt Elev 435
--	------------------------	---

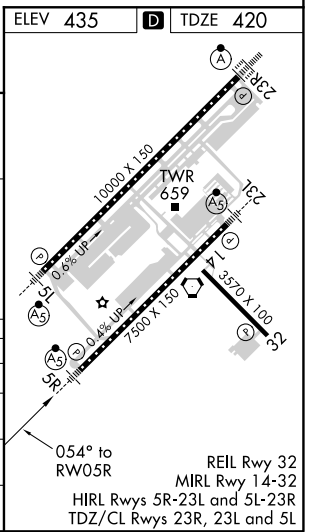
RNAV (GPS) Y RWY 5R

RALEIGH-DURHAM INTL (RDU)

RNP APCH.		MISSED APPROACH: Climb to 2600 direct POBIC and on track 099° to ZEBUL and hold.					
Simultaneous approach authorized. LNAV procedure NA during simultaneous operations. For uncompensated Baro-VNAV systems, LNAV/VNAV NA below -10°C (14°F) or above 54°C (130°F). Use of FD or AP required during simultaneous operations. For inop ALS, increase LNAV/VNAV all Cats visibility to RVR 4500 and LNAV Cats C/D visibility to RVR 5500.		MALSR 					
D-ATIS	RALEIGH APP CON	(EAST) RALEIGH TOWER (WEST)	(EAST) GND CON (WEST)	CLNC DEL	CPDLC		
123.8	127.675 307.9	127.45 257.8 Rwys 5R-23L and 14-32	119.3 257.8 Rwy 5L-23R	121.9 348.6 Rwys 5R-23L and 14-32	121.7 348.6 Rwy 5L-23R	120.1	



VGSi and RNAV glidepath not coincident (VGSi Angle 3.00/TCH 62).		2600	POBIC	tr 099°	ZEBUL
4 NM Holding Pattern					
6000	← 234°	PURME			
3400	→ 054°	2400	AMORT		
			1.4 NM to RWY 5R		
			*900		
			RWY 5R		
		6 NM	4.7 NM	1.4 NM	



CATEGORY	A	B	C	D
LPV DA		620/24	200 (200-½)	
LNAV/VNAV DA		710/24	290 (300-½)	
LNAV MDA	780/24	360 (400-½)	780/30	360 (400-¾)
CIRCLING	960-1	525 (600-1)	1040-1¾ 605 (700-1¾)	1180-2½ 745 (800-2½)

SE-2, 10 SEP 2020 to 08 OCT 2020

SE-2, 10 SEP 2020 to 08 OCT 2020