

# SOUTH BOSTON SEVEN ARRIVAL

RALEIGH-DURHAM, NORTH CAROLINA

RALEIGH APP CON  
127.675 307.9  
RDU D-ATIS  
123.8

**ROANOKE**  
109.4 ROA  
Chan 31  
N37°20.61'-W80°04.22'  
L-26, H-10-12

**GORDONSVILLE**  
115.6 GVE  
Chan 103  
N38°00.82'-W78°09.18'  
L-34-36, H-10-12

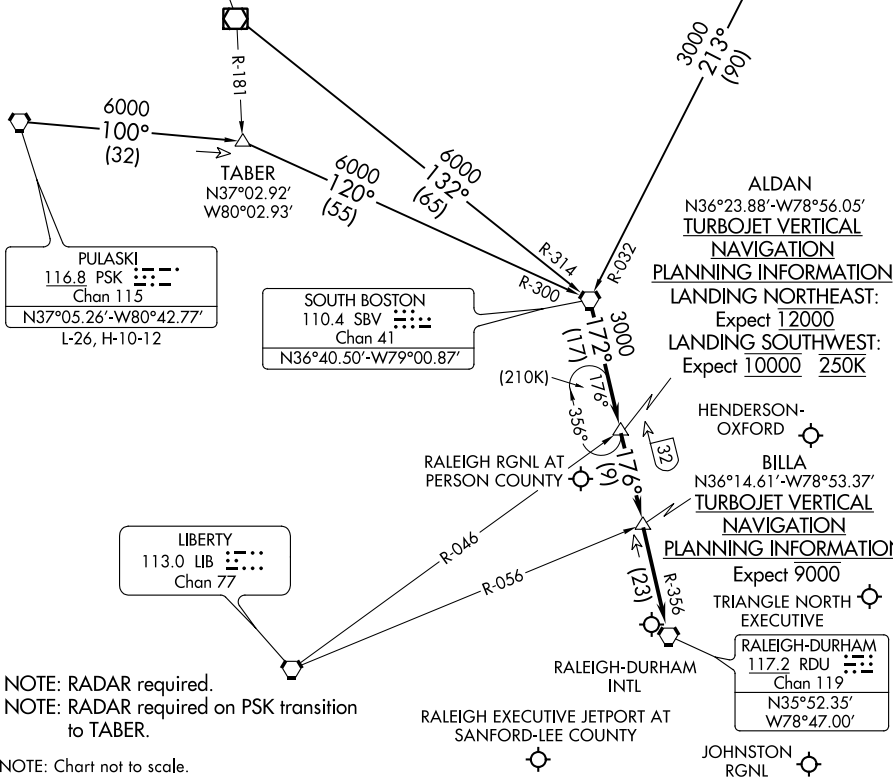
**PULASKI**  
116.8 PSK  
Chan 115  
N37°05.26'-W80°42.77'  
L-26, H-10-12

**SOUTH BOSTON**  
110.4 SBV  
Chan 41  
N36°40.50'-W79°00.87'

**LIBERTY**  
113.0 LIB  
Chan 77

NOTE: RADAR required.  
NOTE: RADAR required on PSK transition to TABER.

NOTE: Chart not to scale.



**ALDAN**  
N36°23.88'-W78°56.05'  
**TURBOJET VERTICAL NAVIGATION**  
**PLANNING INFORMATION**  
LANDING NORTHEAST:  
Expect 12000  
LANDING SOUTHWEST:  
Expect 10000 250K

**BILLA**  
N36°14.61'-W78°53.37'  
**TURBOJET VERTICAL NAVIGATION**  
**PLANNING INFORMATION**  
Expect 9000  
TRIANGLE NORTH EXECUTIVE

**RALEIGH-DURHAM**  
117.2 RDU  
Chan 119  
N35°52.35'  
W78°47.00'

## ARRIVAL ROUTE DESCRIPTION

**GORDONSVILLE TRANSITION (GVE.SBV7):** From over GVE VORTAC on GVE R-213 and SBV R-032 to SBV VORTAC. Thence. . . .  
**PULASKI TRANSITION (PSK.SBV7):** From over PSK VORTAC on PSK R-100 to TABER, then on SBV R-300 to SBV VORTAC. Thence. . . .  
**ROANOKE TRANSITION (ROA.SBV7):** From over ROA VOR/DME on ROA R-132 and SBV R-314 to SBV VORTAC. Thence . . . .

. . . .from over SBV VORTAC on SBV R-172 and RDU VORTAC R-356 to RDU VORTAC. For arrivals to KRDU, KLHZ, KJNX, and KTTA airports: Expect RADAR vectors to final approach course after BILLA.  
For arrivals to KHNZ and KTDF airports: Expect RADAR vectors to final approach course after ALDAN.

# SOUTH BOSTON SEVEN ARRIVAL

RALEIGH-DURHAM, NORTH CAROLINA

SE-2, 10 SEP 2020 to 08 OCT 2020

SE-2, 10 SEP 2020 to 08 OCT 2020