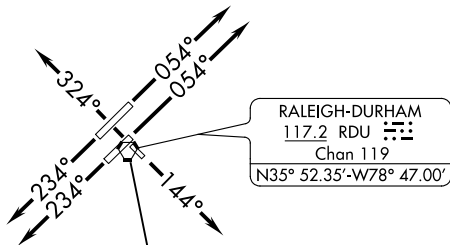
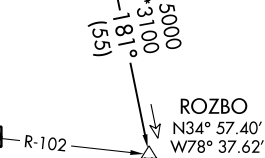


TAR HEEL ONE DEPARTURE

D-ATIS
123.8
CLNC DEL
102.1
CPDLC
RALEIGH DEP CON
125.3 353.675



FAYETTEVILLE
108.8 FAY
Chan 25



CAROLINA BEACH
216 CLB
N34°06.38'
W77°57.68'
L-35, H-9

NOTE: RADAR required.
NOTE: CAROLINA BEACH TRANSITION: ADF required.
NOTE: SPECIAL INSTRUCTIONS/CHS TRANSITION:
If not receiving CHS at ROZBO, fly heading 215°
until receiving CHS suitable for navigation.

CHARLESTON
113.5 CHS
Chan 82
N32°53.66'
W80°02.27'
L-24, H-9-12



TAKEOFF MINIMUMS

- Rwys 5L/R: Standard.
- Rwy 14: Standard with minimum climb of 230' per NM to 2700.
- Rwy 23L: Standard with minimum climb of 250' per NM to 2700.
- Rwy 23R: Standard with minimum climb of 240' per NM to 2700.
- Rwy 32: 300-1.

NOTE: Chart not to scale.



DEPARTURE ROUTE DESCRIPTION

- TAKEOFF RWYS 5L/5R: Climb heading 054° or as assigned by ATC, thence. . . .
- TAKEOFF RWY 14: Climb heading 144° or as assigned by ATC, thence. . . .
- TAKEOFF RWY 23L/R: Climb heading 234° or as assigned by ATC, thence. . . .
- TAKEOFF RWY 32: Climb heading 324° or as assigned by ATC, thence. . . .

. . . .on vectors to join filed route/fix. Expect clearance to filed altitude/flight level ten minutes after departure.

CAROLINA BEACH TRANSITION (TARL1.CLB): From over RDU VORTAC on RDU R-181 to ROZBO INT, then on CLB 156° bearing to CLB NDB.

CHARLESTON TRANSITION (TARL1.CHS): From over RDU VORTAC on RDU R-181 to ROZBO INT, then on CHS R-034 to CHS VORTAC.