

WAAS CH <b>53631</b> <b>W22A</b>	APP CRS <b>218°</b>	Rwy ldg TDZE <b>68</b> Apt Elev <b>75</b>	<b>6144</b>
--	------------------------	---	-------------

# RNAV (GPS) RWY 22

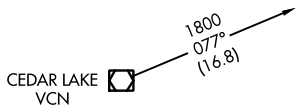
ATLANTIC CITY INTL (ACY)

**ASR** For uncompensated Baro-VNAV systems, LNAV/VNAV NA below -1.4°C (7°F) or above 54°C (130°F). Rwy 22 helicopter visibility reduction below ¾ SM NA. DME/DME RNP-0.3 NA.

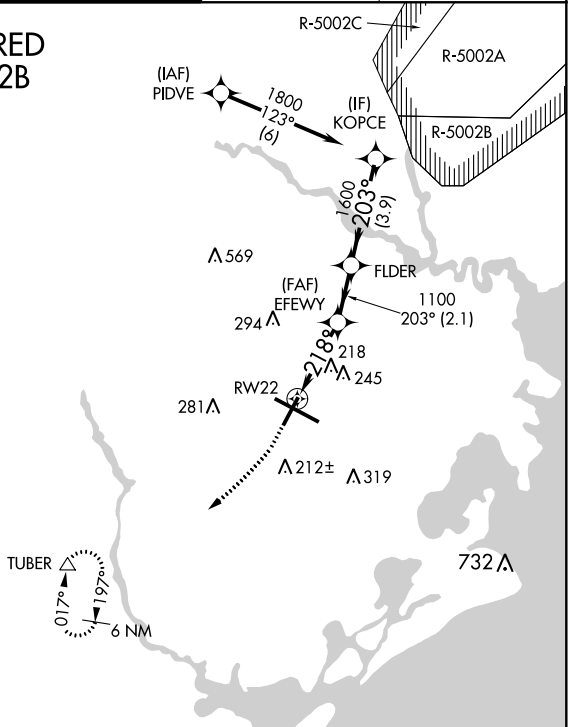
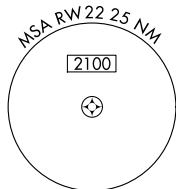
MISSED APPROACH: Climb to 600 then climbing right turn to 2000 direct TUBER and hold.

ATIS <b>125.725 316.15</b>	ATLANTIC CITY APP CON <b>124.6 327.125</b>	ATLANTIC CITY TOWER <b>120.3 239.0</b>	GND CON <b>121.9 284.6</b>	CLNC DEL <b>127.85 353.775</b>
-------------------------------	---	---	-------------------------------	-----------------------------------

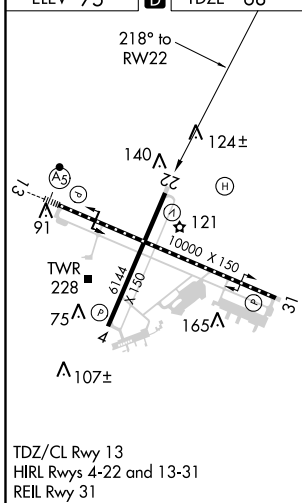
**RADAR REQUIRED  
WHEN R-5002B  
IS ACTIVE.**



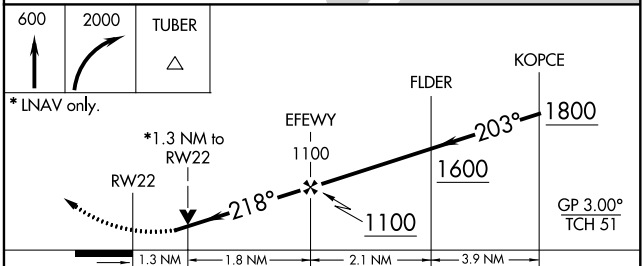
Procedure NA for arrival on VCN VORTAC  
airway radials 066 CW 160.



ELEV 75	<b>D</b>	TDZE 68
---------	----------	---------



TDZ/CL Rwy 13  
HIRL Rwy 4-22 and 13-31  
REIL Rwy 31



CATEGORY	A	B	C	D	E
LPV DA	364-1		296 (300-1)		
LNAV/VNAV DA	356-7/8		288 (300-7/8)		
LNAV MDA	520-1 452 (500-1)		520-1 452 (500-1 1/8)		
CIRCLING	540-1 465 (500-1)		540-1 1/2 465 (500-1 1/2)	640-2 565 (600-2)	760-2 1/2 685 (700-2 1/2)

NE-2, 10 SEP 2020 to 08 OCT 2020

NE-2, 10 SEP 2020 to 08 OCT 2020