

RNAV (RNP) Z RWY 13

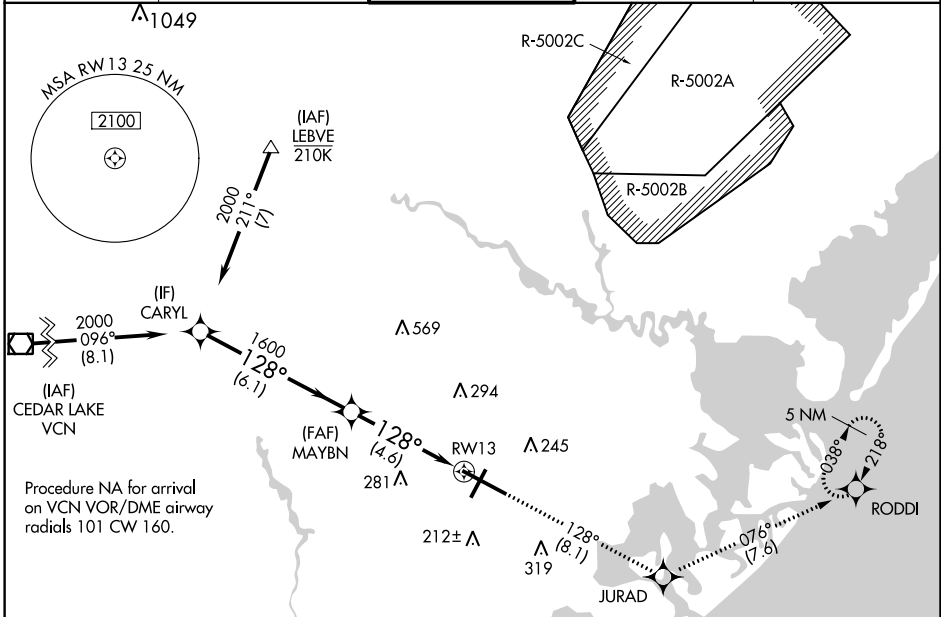
ATLANTIC CITY INTL (ACY)

APP CRS	Rwy Ldg	10000
128°	TDZE	75
	Apt Elev	75

NA For uncompensated Baro-VNAV systems, procedure NA below -13°C (9°F) or above 54°C (130°F). GPS required.
ASR For inop ALS, increase RNP 0.30 all Cats visibility to RVR 6000.

MALSR
MISSED APPROACH: Climb to 2000 on track 128° to JURAD and on track 076° to RODDI and hold.

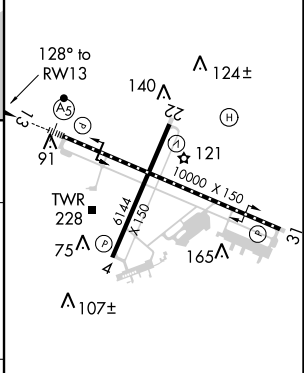
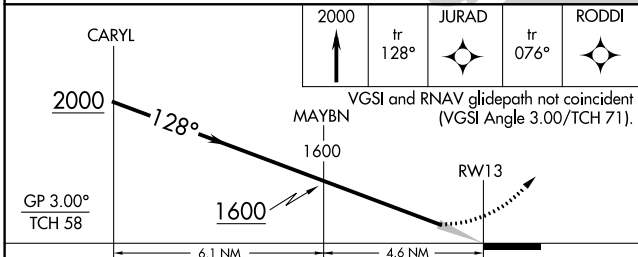
ATIS	ATLANTIC CITY APP CON	ATLANTIC CITY TOWER	GND CON	CLNC DEL
125.725 316.15	124.6 327.125	120.3 239.0	121.9 284.6	127.85 353.775



NE-2, 10 SEP 2020 to 08 OCT 2020

NE-2, 10 SEP 2020 to 08 OCT 2020

ELEV	75	D	TDZE	75
------	-----------	----------	------	-----------



CATEGORY	A	B	C	D
RNP 0.30 DA		442/40	367 (400-¾)	

TDZ/CL Rwy 13
 HIRL Rwys 4-22 and 13-31
 REIL Rwy 31

AUTHORIZATION REQUIRED