

APP CRS	Rwy ldg	<b>10000</b>
<b>308°</b>	TDZE	<b>63</b>
	Apt Elev	<b>75</b>

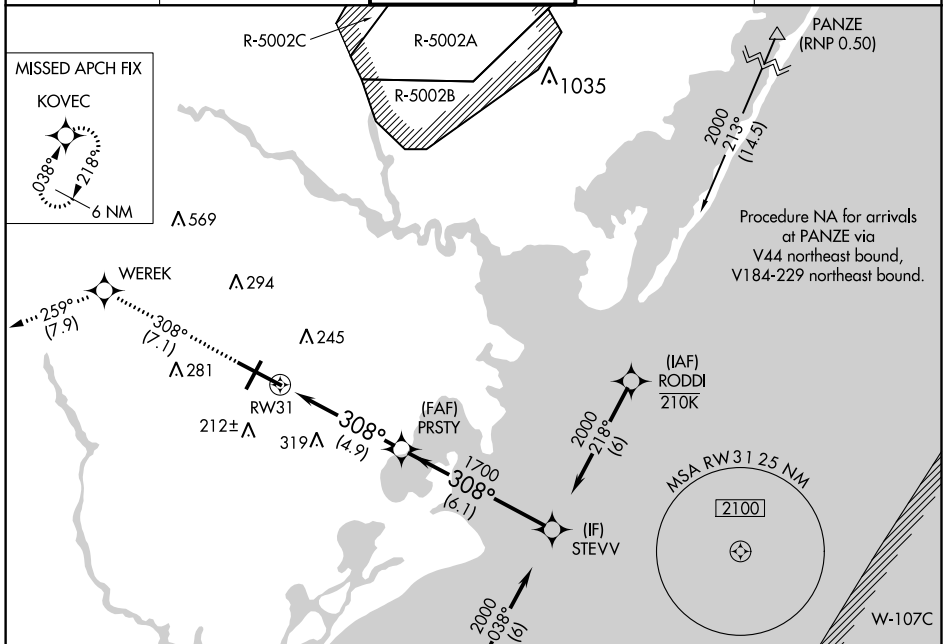
# RNAV (RNP) Z RWY 31

ATLANTIC CITY INTL (ACY)

**ASR** GPS Required. Procedure NA at night.  
 For uncompensated Baro-VNAV systems, procedure NA below -13°C (8°F) or above 54°C (130°F).

**MISSED APPROACH:** Climb to 2000 on track 308° to WEREK on track 259° to KOVEC and hold.

ATIS	ATLANTIC CITY APP CON	ATLANTIC CITY TOWER	GND CON	CLNC DEL
<b>125.725 316.15</b>	<b>124.6 327.125</b>	<b>120.3 239.0</b>	<b>121.9 284.6</b>	<b>127.85 353.775</b>



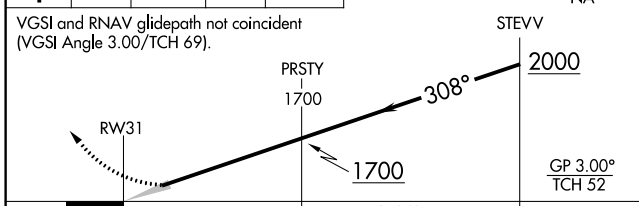
NE-2, 10 SEP 2020 to 08 OCT 2020

NE-2, 10 SEP 2020 to 08 OCT 2020

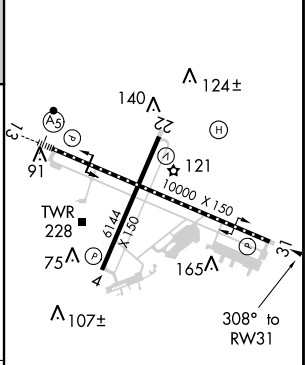
2000	↑	tr 308°	WEREK	↑	tr 259°	KOVEC
------	---	---------	-------	---	---------	-------

VGSI and RNAV glidepath not coincident (VGSI Angle 3.00/TCH 69).

Procedure Turn NA



ELEV 75	<b>D</b>	TDZE 63
---------	----------	---------



CATEGORY	A	B	C	D
RNP 0.30 DA		408/60	345 (400-1¼)	

## AUTHORIZATION REQUIRED

TDZ/CL Rwy 13  
 HIRL Rwy 4-22 and 13-31  
 REIL Rwy 31