

LOC I-RUX <b>111.7</b>	APP CRS <b>335°</b>	Rwy ldg TDZE Apt Elev	<b>8301</b> <b>143</b> <b>146</b>
---------------------------	------------------------	-----------------------------	---

BALTIMORE/  
WASHINGTON INTL THURGOOD MARSHALL (BWI)  
**ILS or LOC RWY 33L**

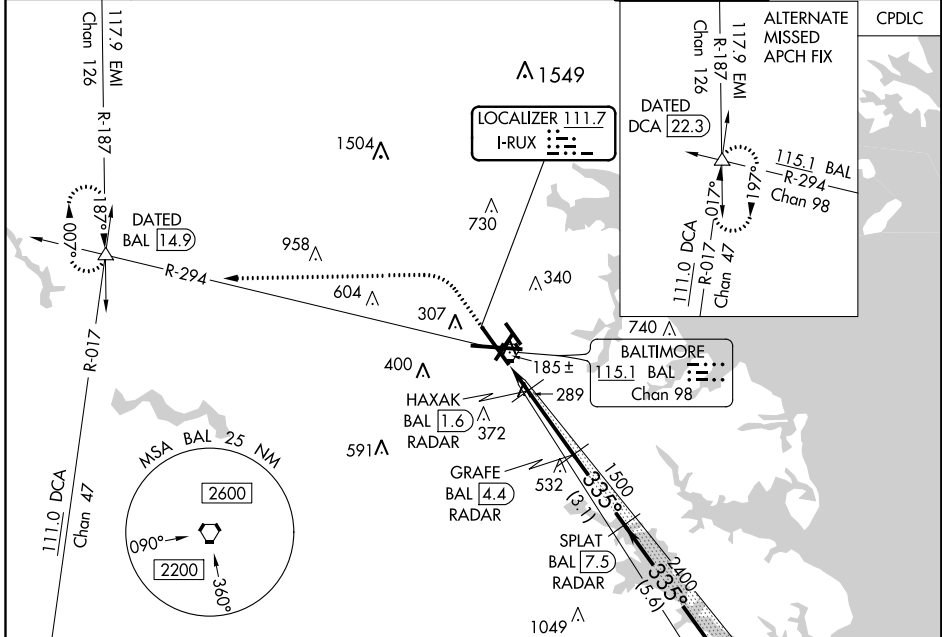
DME or RADAR required for LOC only. RADAR required for procedure entry.

Simultaneous approach authorized with ILS or LOC Rwy 33R. DME from BAL VORTAC.

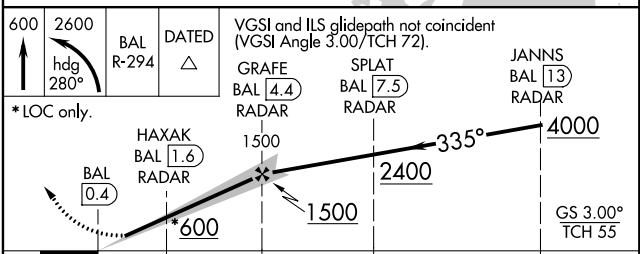
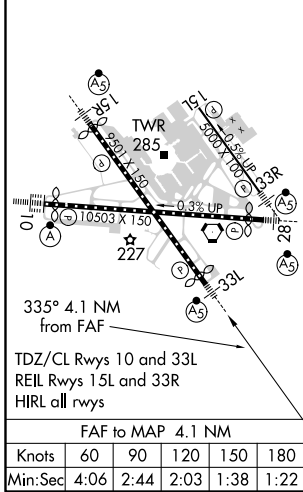
MALSR

MISSED APPROACH: Climb to 600 then climbing left turn to 2600 on heading 280° and BAL R-294 to DATED INT/BAL 14.9 DME and hold.

D-ATIS <b>115.1 127.8</b>	POTOMAC APP CON (020°-100°) <b>119.7 290.475</b> (131°-180°) (101°-130°) <b>128.7 307.9</b> (181°-019°)	BALTIMORE TOWER <b>119.4 257.8</b>	GND CON <b>121.9</b>	CLNC DEL <b>118.05</b>
------------------------------	---	---------------------------------------	-------------------------	---------------------------



ELEV 146	<b>D</b>	TDZE 143
----------	----------	----------



VGSI and ILS glidepath not coincident (VGSI Angle 3.00/TCH 72).				
*LOC only.				
CATEGORY	A	B	C	D
S-ILS 33L	343/18		200 (200-½)	
S-LOC 33L	540/24	397 (400-½)	540/40	397 (400-¾)
<b>C</b> CIRCLING	640-1 494 (500-1)	660-1 514 (600-1)	700-1½ 554 (600-1½)	880-2¼ 734 (800-2¼)

NE-3, 10 SEP 2020 to 08 OCT 2020

NE-3, 10 SEP 2020 to 08 OCT 2020