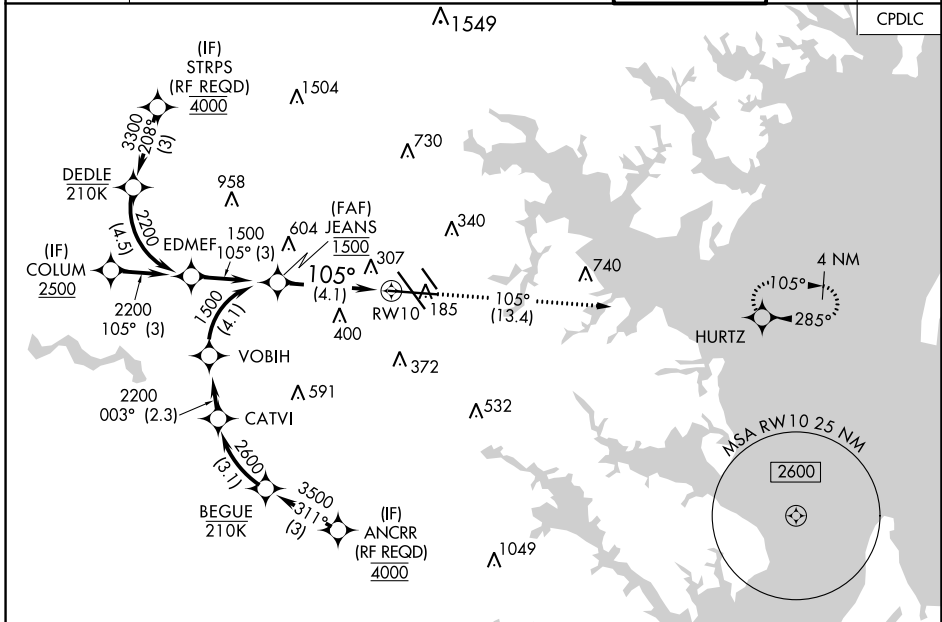


APP CRS 105°	Rwy Idg TDZE Apt Elev	9953 143 143
------------------------	-----------------------------	---

RNAV (RNP) Z RWY 10

BALTIMORE/WASHINGTON INTL THURGOOD MARSHALL (BWI)

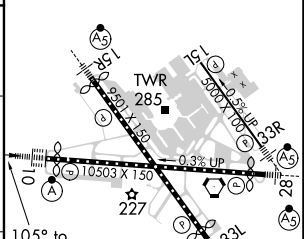
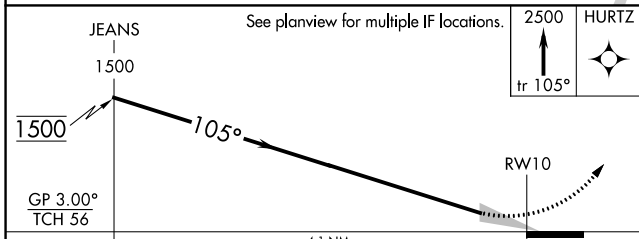
RNP AR APCH.		ALSF-2	MISSED APPROACH: Climb to 2500 on track 105° to HURTZ and hold.
▼ For uncompensated Baro-VNAV systems, procedure NA below -12°C (11°F) or above 54°C (130°F). For inop ALS, increase RNP 0.11 all Cats visibility to RVR 4500, increase RNP 0.30 all Cats visibility to 1/3.			
D-ATIS 115.1 127.8	POTOMAC APP CON 119.0 282.275 124.55 317.425	(020°-100°) 119.7 290.475 (131°-180°) (101°-130°) 128.7 307.9 (181°-019°)	BALTIMORE TOWER 119.4 257.8 GND CON 121.9 CLNC DEL 118.05



NE-3, 10 SEP 2020 to 08 OCT 2020

NE-3, 10 SEP 2020 to 08 OCT 2020

ELEV 143	D	TDZE 143
----------	----------	----------



CATEGORY	A	B	C	D
RNP 0.11 DA		448/24	305 (400-1/2)	
RNP 0.30 DA		626/60	483 (500-1/4)	

AUTHORIZATION REQUIRED

TDZ/CL Rwys 10 and 33L
REIL Rwys 15L and 33R
HIRL all Rwys

RNAV (RNP) Z RWY 10