

APP CRS **285°**  
 Rwy ldg **9803**  
 TDZE **143**  
 Apt Elev **143**

# RNAV (RNP) Z RWY 28

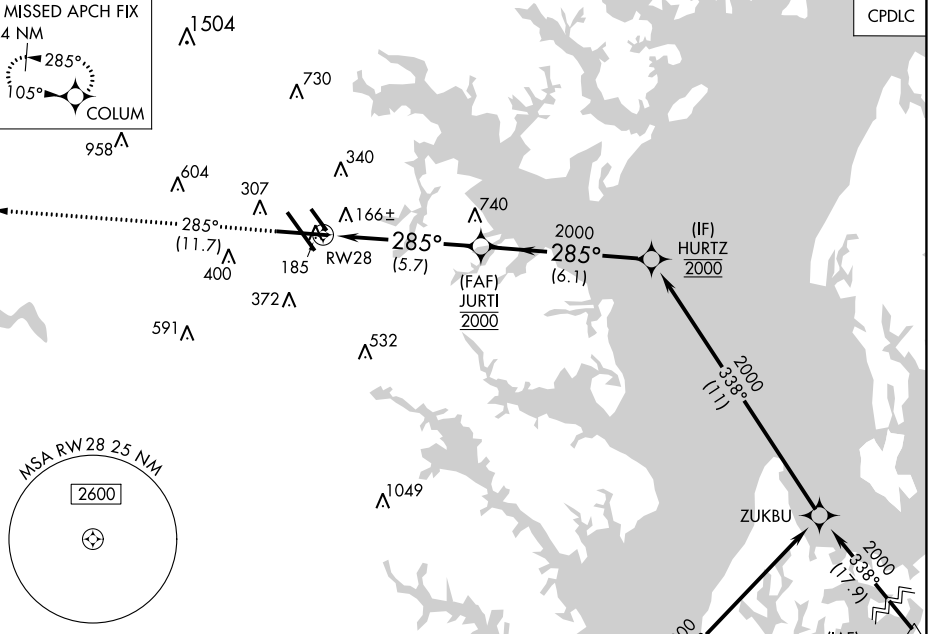
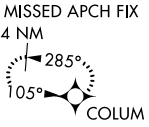
BALTIMORE/WASHINGTON INTL THURGOOD MARSHALL (BWI)

▼ For uncompensated Baro-VNAV systems, procedure NA below -12°C (11°F) or above 54°C (130°F). GPS Required. For inoperative MALSR, increase RNP 0.30 all Cats visibility to 1¼.



MISSED APPROACH: Climb to 2500 on track 285° to COLUM and hold.

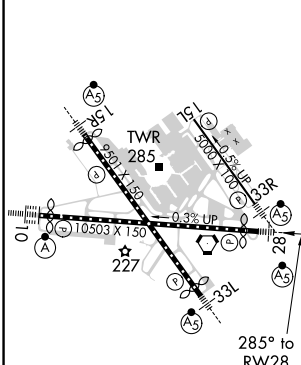
D-ATIS <b>115.1 127.8</b>	POTOMAC APP CON (020°-100°) <b>119.7 290.475</b> (131°-180°) (101°-130°) <b>128.7 307.9</b> (181°-019°)	BALTIMORE TOWER <b>119.4 257.8</b>	GND CON <b>121.9</b>	CLNC DEL <b>118.05</b>
------------------------------	---------------------------------------------------------------------------------------------------------------	---------------------------------------	-------------------------	---------------------------



NE-3, 10 SEP 2020 to 08 OCT 2020

NE-3, 10 SEP 2020 to 08 OCT 2020

ELEV **143** **D** TDZE **143**



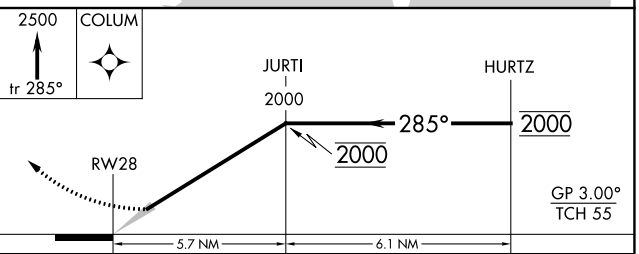
TDZ/CL Rws 10 and 33L  
 REIL Rws 15L and 33R  
 HIRL all rws

Procedure NA for arrivals at RAVNN on V379 westbound.



Procedure NA for arrivals at BILIT on V308 eastbound.

(IAF) BILIT 11000 Max 250 KIAS



CATEGORY	A	B	C	D
RNP 0.30 DA	521/45		378 (400-7%)	

## AUTHORIZATION REQUIRED

# RNAV (RNP) Z RWY 28