

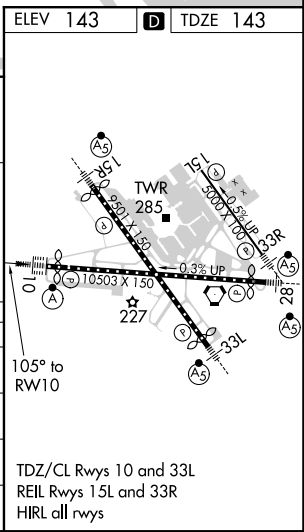
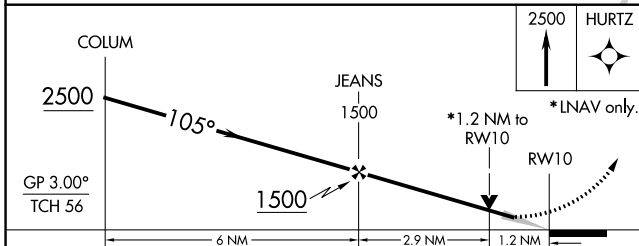
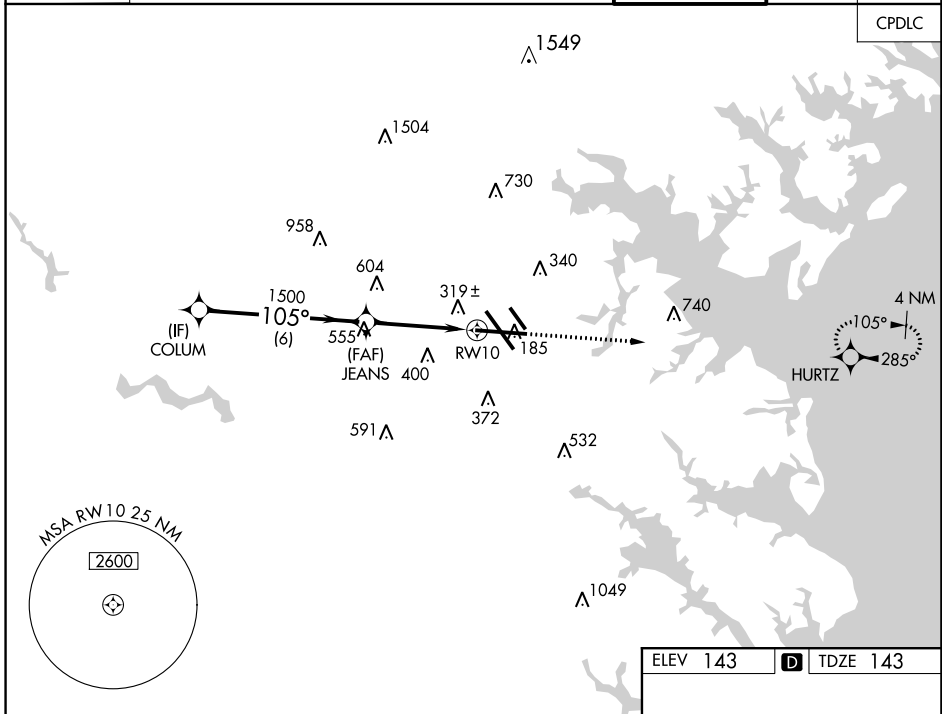
WAAS CH <b>53707</b> <b>W10A</b>	APP CRS <b>105°</b>	Rwy Idg TDZE <b>143</b> Apt Elev <b>143</b>	<b>9953</b> <b>143</b> <b>143</b>
--	------------------------	---	---

# RNAV (GPS) Y RWY 10

BALTIMORE/WASHINGTON INTL THURGOOD MARSHALL (BWI)

RNP APCH.	ALSF-2	MISSED APPROACH: Climb to 2500 direct HURTZ and hold.
<p>▼ For uncompensated Baro-VNAV systems, LNAV/VNAV NA below -12°C (11°F) or above 54°C (130°F).</p> <p>▲</p>		

D-ATIS <b>115.1 127.8</b>	POTOMAC APP CON (020°-100°) <b>119.7 290.475</b> (131°-180°) (101°-130°) <b>124.55 317.425</b> (181°-019°)	BALTIMORE TOWER <b>119.4 257.8</b>	GND CON <b>121.9</b>	CLNC DEL <b>118.05</b>
------------------------------	--	---------------------------------------	-------------------------	---------------------------



CATEGORY	A	B	C	D
LPV DA		343/18	200 (200-1/2)	
LNAV/VNAV DA		586/50	443 (500-1)	
LNAV MDA	580/24	437 (500-1/2)	580/40	437 (500-3/4)
<b>C</b> CIRCLING	640-1 497 (500-1)	660-1 517 (600-1)	700-1 1/2 557 (600-1 1/2)	860-2 1/4 717 (800-2 1/4)

NE-3, 10 SEP 2020 to 08 OCT 2020

NE-3, 10 SEP 2020 to 08 OCT 2020