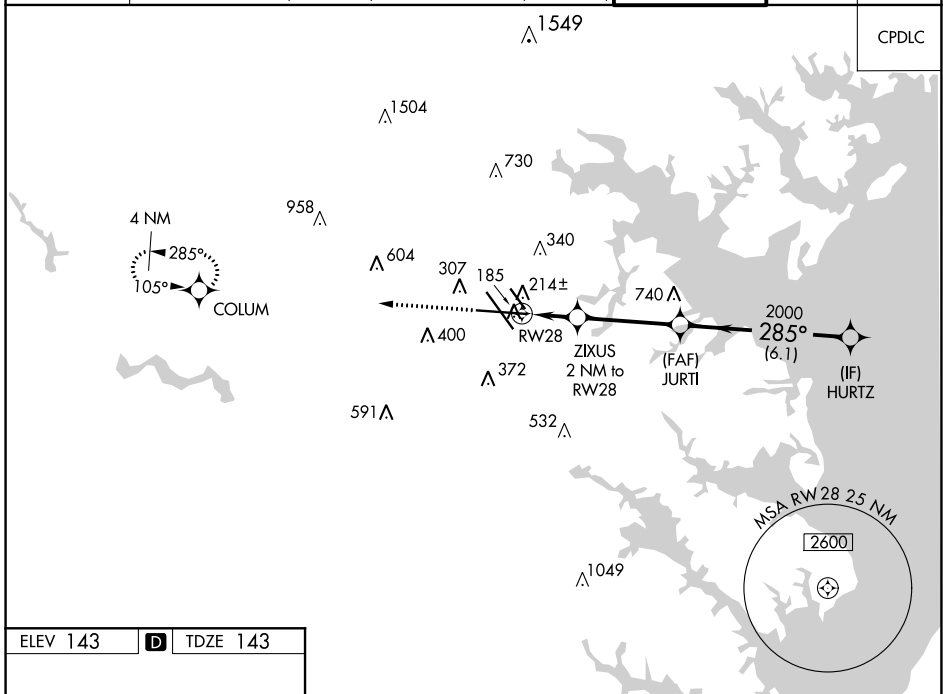


WAAS CH 48808 W28A	APP CRS 285°	Rwy Idg TDZE Apt Elev	9803 143 143
--	------------------------	-----------------------------	---

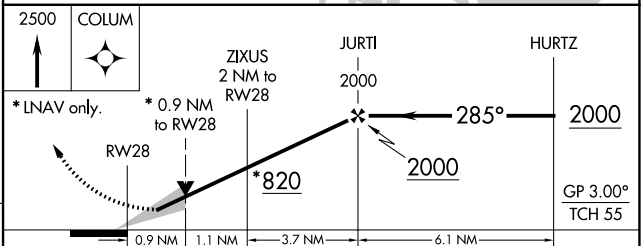
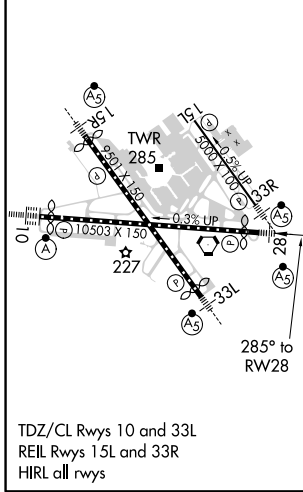
BALTIMORE/
WASHINGTON INTL THURGOOD MARSHALL (BWI)

RNAV (GPS) Y RWY 28

RNP APCH.		POTOMAC APP CON (020°-100°) 119.7 290.475 (131°-180°) (101°-130°) 128.7 307.9 (181°-019°)		BALTIMORE TOWER 119.4 257.8	GND CON 121.9	CLNC DEL 118.05
<p>▼ For uncompensated Baro-VNAV systems, LNAV/VNAV NA below -12°C (11°F) or above 54°C (130°F). For inop ALS, increase LNAV/VNAV all Cats visibility to RVR 4000. ** RVR 1800 authorized with use of FD or AP or HUD to DA.</p> <p>▲</p>		MALSR		MISSED APPROACH: Climb to 2500 direct COLUM and hold.		



ELEV 143	D	TDZE 143
----------	----------	----------



CATEGORY	A	B	C	D
LPV DA**		343/24	200 (200-½)	
LNAV/VNAV DA		395/24	252 (300-½)	
LNAV MDA	480/24	337 (400-½)	480/26	337 (400-½)
C CIRCLING	640-1 497 (500-1)	660-1 517 (600-1)	700-1½ 557 (600-1½)	860-2¼ 717 (800-2¼)

NE-3, 10 SEP 2020 to 08 OCT 2020

NE-3, 10 SEP 2020 to 08 OCT 2020