

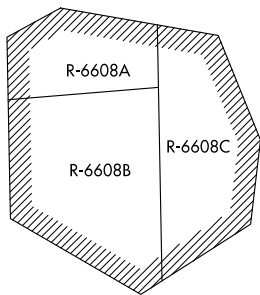
# CAVLR THREE ARRIVAL (RNAV)

AL-5100 (FAA)

WASHINGTON DULLES INTL (IAD)  
WASHINGTON, DC

POTOMAC APP CON  
128.525 306.925  
D-ATIS  
134.85

**COINZ**  
Landing North Rws 1L/C/R, 30:  
Expect RADAR vectors to final  
approach course after COINZ.  
6000

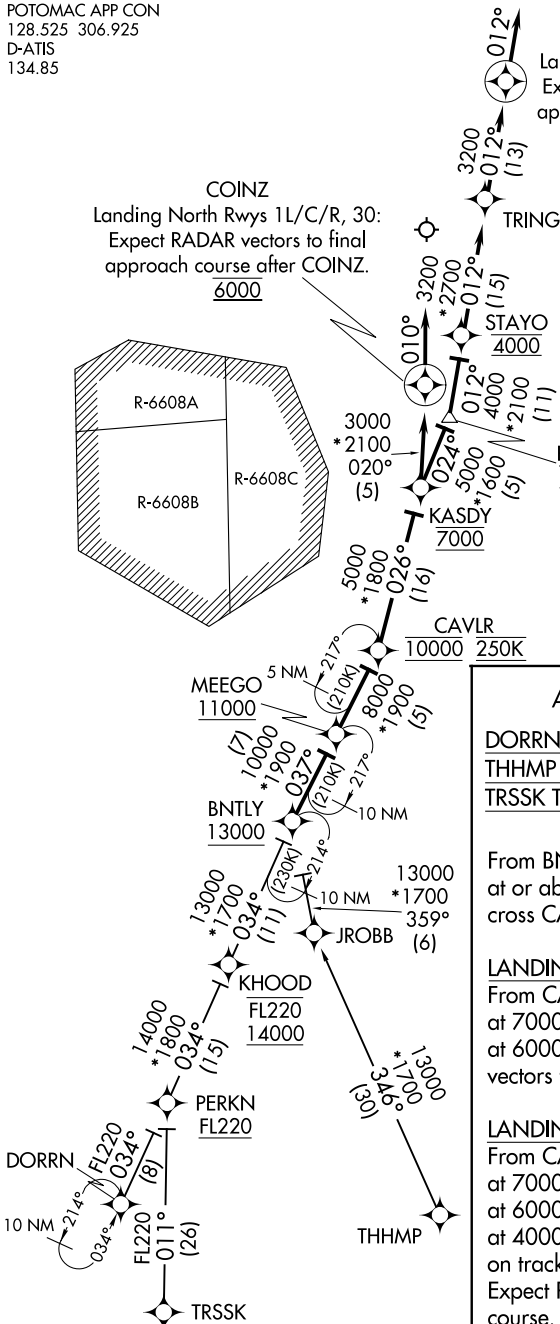


**MIXNN**  
Landing South Rws 19L/C/R:  
Expect RADAR vectors to final  
approach course after MIXNN.

- NOTE: RADAR required.
- NOTE: RNAV 1.
- NOTE: DME/DME/IRU or GPS required.
- NOTE: Turbojet aircraft only.
- NOTE: ARTCC will issue landing direction (North or South) and Potomac TRACON will issue runway assignments.

NE-3, 10 SEP 2020 to 08 OCT 2020

NE-3, 10 SEP 2020 to 08 OCT 2020



NOTE: Chart not to scale.

## ARRIVAL ROUTE DESCRIPTION

DORRN TRANSITION (DORRN.CAVLR3)

THHMP TRANSITION (THHMP.CAVLR3)

TRSSK TRANSITION (TRSSK.CAVLR3)

From BNTLY on track 037° to cross MEEGO at or above 11000, then on track 037° to cross CAVLR at 10000 and at 250K.

LANDING NORTH RUNWAYS 1L/C/R, 30:  
From CAVLR on track 026° to cross KASDY at 7000, then on track 020° to cross COINZ at 6000, then on track 010°. Expect RADAR vectors to final approach course.

LANDING SOUTH RUNWAYS 19L/C/R:  
From CAVLR on track 026° to cross KASDY at 7000, then on track 024° to cross BARIN at 6000, then on track 012° to cross STAYO at 4000, then on track 012° to TRING, then on track 012° to MIXNN, then on track 012°. Expect RADAR vectors to final approach course.

# CAVLR THREE ARRIVAL (RNAV)

(BNTLY.CAVLR3) 04FEB16

WASHINGTON, DC  
WASHINGTON DULLES INTL (IAD)