

LOC I-DLX 111.3	APP CRS 191°	Rwy Idg 11089 TDZE 272 Apt Elev 312
---------------------------	------------------------	--

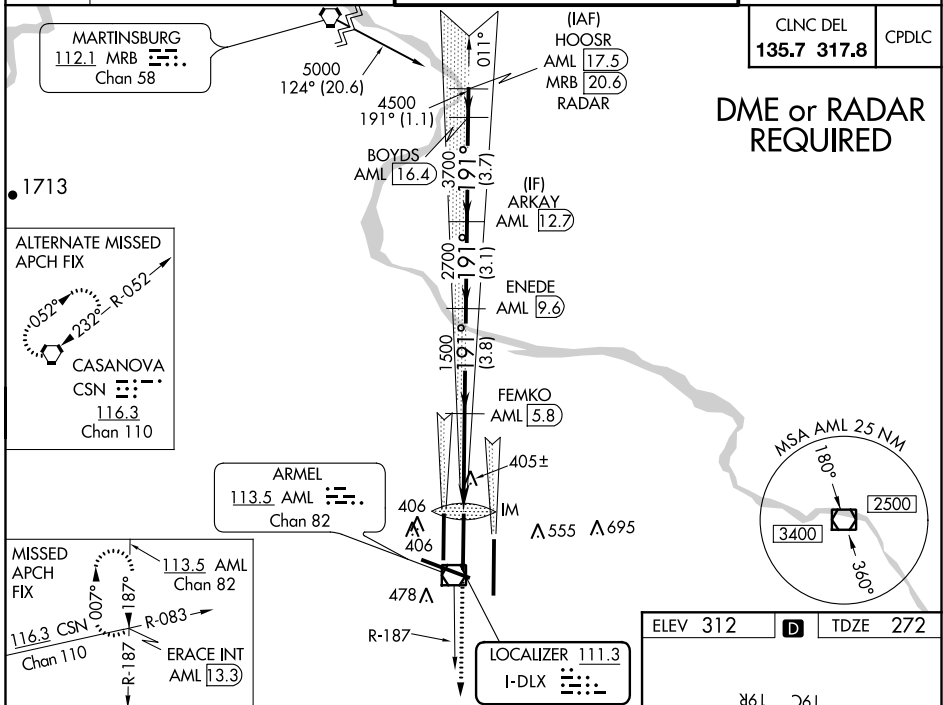
ILS RWY 19C (CAT II & III)

WASHINGTON DULLES INTL (IAD)

▼ DME from AML VOR/DME. Simultaneous reception of I-DLX and AML DME required. Simultaneous approach authorized with ILS or LOC Rwy 19L, ILS Rwy 19L (Cat II), ILS or LOC/DME Rwy 19R, ILS Rwy 19R (Cat III), ILS Rwy 19R (Cat III).

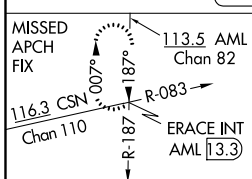
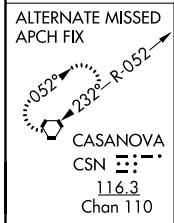
▲ MISSED APPROACH: Climb to 3000 via heading 191° and AML VOR/DME R-187 to ERACE INT/AML 13.3 DME and hold.

D-ATIS 134.85	POTOMAC APP CON 120.45 306.925 (241°-330°) 128.525 306.925 (091°-240°) 126.1 338.25 (331°-090°)	DULLES TOWER 120.1 317.8 (Rwy 1R/19L) 120.25 348.6 (Rwy 1C/19C) 134.425 348.6 (Rwys 1L/19R and 12/30)	GND CON 121.9 317.8 (EAST) 121.625 348.6 (WEST)
-------------------------	---	---	---

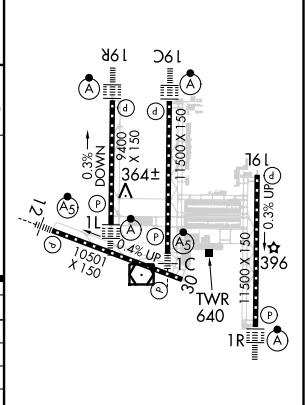
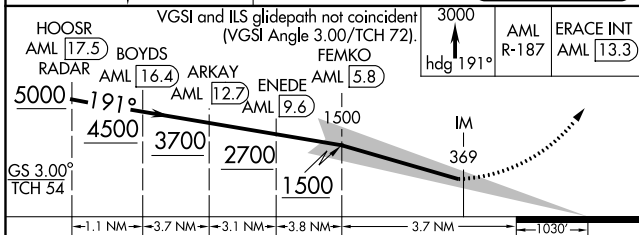


CLNC DEL 135.7 317.8	CPDLC
--------------------------------	-------

DME or RADAR REQUIRED



ELEV 312	D	TDZE 272
----------	----------	----------



CATEGORY	A	B	C	D
S-ILS 19C		CAT II	RA 108/12	100 DA 372
S-ILS 19C		CAT IIIa	RVR 07	
S-ILS 19C		CAT IIIb	RVR 06	
S-ILS 19C		CAT IIIc	NA	

CATEGORY II & III ILS - SPECIAL AIRCREW & AIRCRAFT CERTIFICATION REQUIRED

TDZ/CL 1C, 1L, 1R, 12, 19C and 19R
REL Rwy 30
HIRL all Rwys