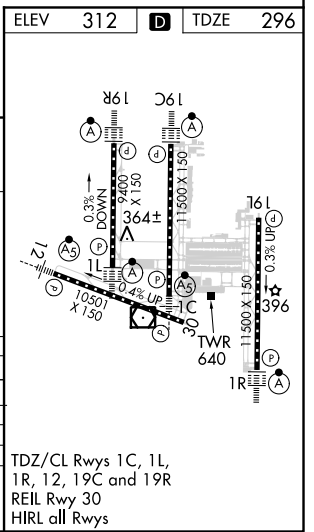
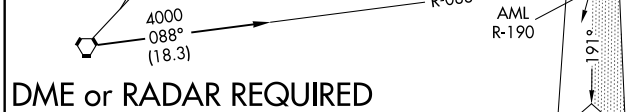
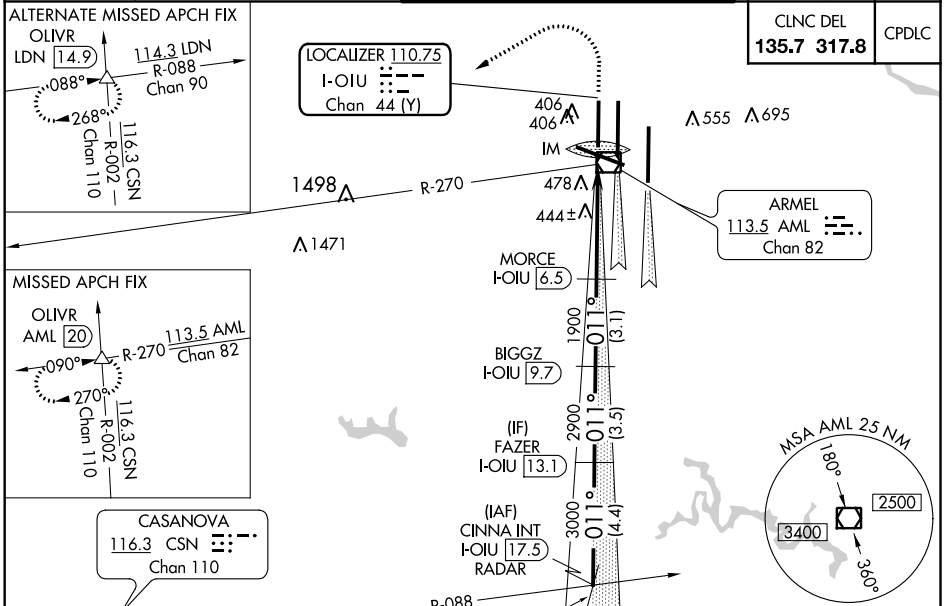


LOC/DME I-OIU 110.75 Chan 44 (Y)	APP CRS 011°	Rwy Idg 9400
		TDZE 296
		Apt Elev 312

ILS RWY 1L (CAT II & III)

WASHINGTON DULLES INTL (IAD)

⚠ Simultaneous approach authorized with ILS or LOC/DME Rwy 1C, ILS Rwy 1C (Cat III), RNAV (GPS) Y Rwy 1C, ILS or LOC Rwy 1R, ILS Rwy 1R (Cat II), ILS Rwy 1R (Cat III), RNAV (GPS) Y Rwy 1R.	POTOMAC APP CON D-ATIS 120.45 306.925 (241°-330°) 128.525 306.925 (091°-240°) 126.1 338.25 (331°-090°)		DULLES TOWER 120.1 317.8 (Rwy 1R/19L) 120.25 348.6 (Rwy 1C/19C) 134.425 348.6 (Rwys 1L/19R and 12/30)		MISSED APPROACH: Climb to 800 then climbing left turn to 5000 via heading 240° and AML VOR/DME R-270 to OLIVR INT/AML 20 DME and hold, continue climb-in-hold to 5000.
	GND CON 121.9 317.8 (EAST) 121.625 348.6 (WEST)				
	CLNC DEL 135.7 317.8 CPDLC				



CINNA INT I-OIU [17.5] RADAR	FAZER I-OIU [13.1]	BIGGZ I-OIU [9.7]	MORCE I-OIU [6.5]	IM
4000	3000	2900	1900	396
011°				
4.4 NM	3.5 NM	3.1 NM	4.8 NM	1108'
GS 3.00° TCH 55				
CATEGORY	A	B	C	D
S-ILS 1L	CAT II RA 97/12 100 DA 396			
S-ILS 1L	CAT IIIa RVR 07			
S-ILS 1L	CAT IIIb RVR 06			
S-ILS 1L	CAT IIIc NA			

CATEGORY II & III ILS - SPECIAL AIRCREW & AIRCRAFT CERTIFICATION REQUIRED

NE-3, 10 SEP 2020 to 08 OCT 2020

NE-3, 10 SEP 2020 to 08 OCT 2020